



# **SUGAR INDUSTRY**

**Table 2.1 - Production account of the sugar industry - Island of Mauritius, 2004**

(Rs million)

Industrial activity	Gross output at basic prices	Intermediate consumption	Value added at basic prices	Taxes on production	Compensation of employees	Gross operating surplus
Agriculture - Sugar cane	7,345.5	2,084.4	5,261.1	21.4	2,030.5	3,209.2
Manufacturing - Sugar Milling	10,721.9 <sup>1</sup>	9,097.6 <sup>1</sup>	1,624.3	0.1	528.1	1,096.1
Electricity - production of electricity <sup>2</sup> (Bagasse cum coal)	1,434.3	700.5	733.8	-	50.1	683.7
Transport <sup>3</sup>	661.4	194.4	467.0	3.5	191.7	271.8
Distribution	46.5	8.8	37.7	-	20.0	17.7
<b>TOTAL</b>	<b>20,209.6</b>	<b>12,085.7</b>	<b>8,123.9</b>	<b>25.0</b>	<b>2,820.4</b>	<b>5,278.5</b>

<sup>1</sup> Includes gross output of sugar cane cultivation

<sup>2</sup> Energy produced by firm Independent Power Producers (IPP)

<sup>3</sup> Transport costs of sugar estates with factories only

**Table 2.2 - Production account of the sugar industry - Island of Mauritius, 2005**

(Rs million)

Industrial activity	Gross output at basic prices	Intermediate consumption	Value added at basic prices	Taxes on production	Compensation of employees	Gross operating surplus
Agriculture - Sugar cane	7,321.8	2,110.0	5,211.8	23.6	2,150.0	3,038.2
Manufacturing - Sugar Milling	10,625.0 <sup>1</sup>	9,016.0 <sup>1</sup>	1,609.0	-	550.0	1,059.0
Electricity - production of electricity <sup>2</sup> (Bagasse cum coal)	N.A	N.A	N.A	N.A	N.A	N.A
Transport <sup>3</sup>	N.A	N.A	N.A	N.A	N.A	N.A
Distribution	N.A	N.A	N.A	N.A	N.A	N.A
<b>TOTAL</b>	N.A	N.A	N.A	N.A	N.A	N.A

<sup>1</sup> Includes gross output of sugar cane cultivation

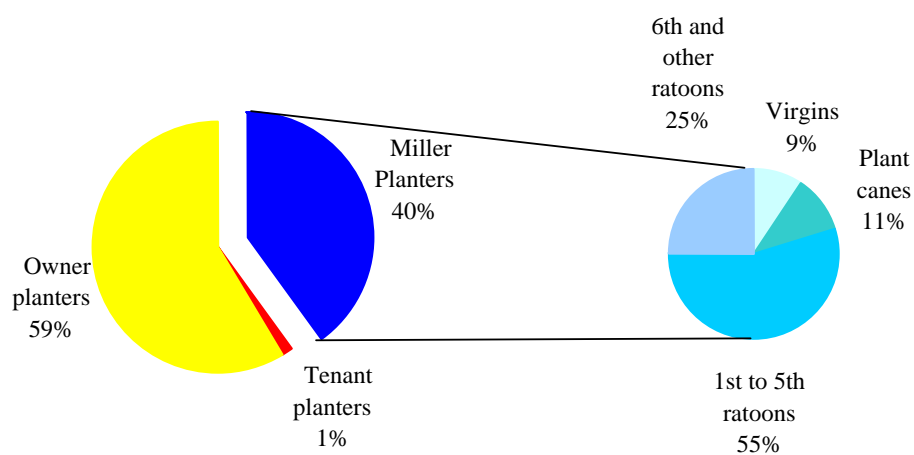
<sup>2</sup> Energy produced by firm Independent Power Producers (IPP)

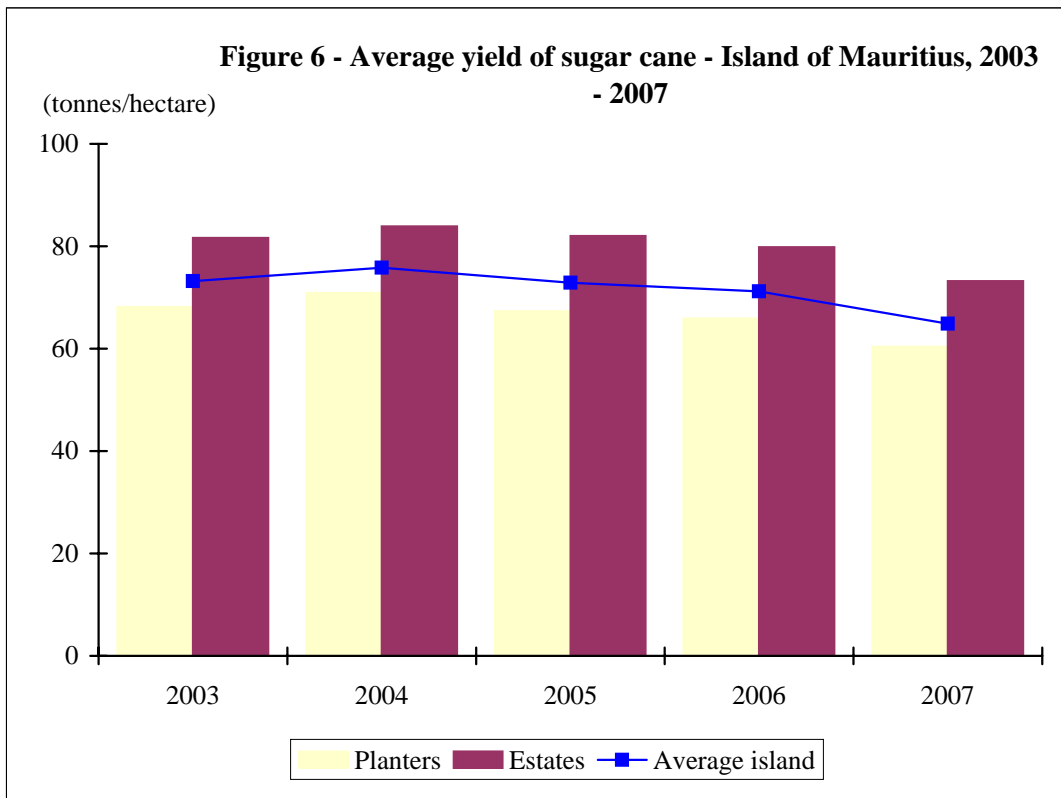
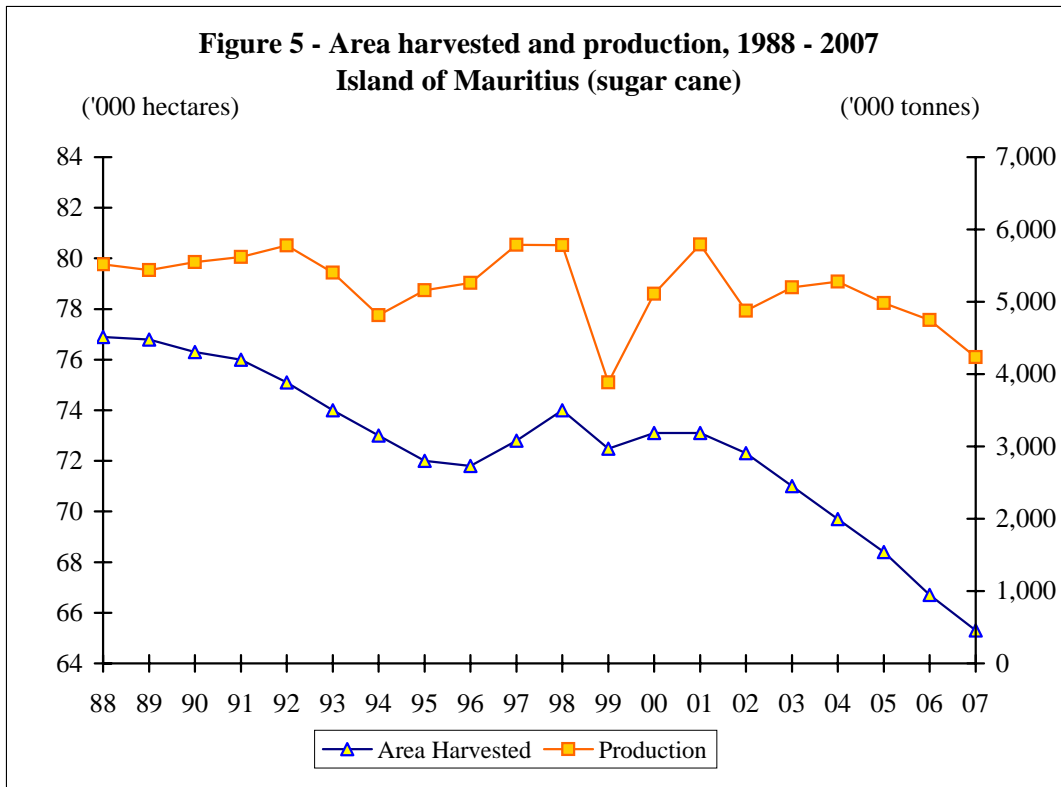
<sup>3</sup> Transport costs of sugar estates with factories only

**Table 2.3 - Area under sugar cane cultivation - Island of Mauritius, 2006-2007 (as at 30th June)**

(Hectares)

	2006	2007
<b>(i) Miller - Planters</b>	<b>30,549</b>	<b>27,483</b>
- Plant canes	2,857	2,936
- Virgins	3,074	2,620
- Ratoons:		
1st to 5th ratoon	17,055	15,042
6th and other ratoons	7,563	6,884
<b>(ii) Owner - Planters</b>	<b>39,287</b>	<b>40,075</b>
<b>(iii) Tenant - Planters</b>	<b>965</b>	<b>965</b>
<b>Total</b>	<b>70,801</b>	<b>68,523</b>

**Figure 4 - Area under sugar cane cultivation as at June 2007****Island of Mauritius**



**Table 2.4 - Area harvested, cane production, cane yield for estates, metayers and owner planters - Island of Mauritius, 1998 - 2007**

Year	Area harvested (hectares)				Cane production ('000 tonnes)				Cane yield (tonnes/hectare)			
	Estates	Metayer	Owner planters	Total	Estates	Metayer	Owner planters	Total	Estates	Metayer	Owner planters	Total
<b>1998</b>	37,330	1,096	35,587	<b>74,013</b>	3,221	61	2,499	<b>5,781</b>	86.3	56.0	70.2	<b>78.1</b>
<b>1999</b>	33,227	1,089	38,231	<b>72,546</b>	2,203	43	1,636	<b>3,882</b>	66.3	39.6	42.9	<b>53.6</b>
<b>2000</b>	35,885	1,092	36,080	<b>73,056</b>	2,878	55	2,176	<b>5,109</b>	80.2	50.8	60.3	<b>69.9</b>
<b>2001</b>	35,495	1,101	36,601	<b>73,197</b>	3,139	64	2,589	<b>5,792</b>	88.4	58.0	70.7	<b>79.1</b>
<b>2002</b>	29,619	1,073	41,575	<b>72,267</b>	2,293	50	2,531	<b>4,874</b>	77.4	46.9	60.9	<b>67.4</b>
<b>2003</b>	28,284	1,041	41,670	<b>70,998</b>	2,309	52	2,839	<b>5,199</b>	81.6	50.1	68.1	<b>73.2</b>
<b>2004</b>	28,022	1,013	40,664	<b>69,698</b>	2,350	49	2,882	<b>5,280</b>	83.9	47.9	70.9	<b>75.8</b>
<b>2005</b>	27,699	1,039	39,612	<b>68,351</b>	2,270	50	2,664	<b>4,984</b>	82.0	47.8	67.3	<b>72.9</b>
<b>2006</b>	26,614	965	39,153	<b>66,732</b>	2,124	44	2,581	<b>4,749</b>	79.8	45.6	65.9	<b>71.2</b>
<b>2007</b>	24,360	964	39,934	<b>65,259</b>	1,783	40	2,412	<b>4,236</b>	73.2	41.8	60.4	<b>64.9</b>

**Table 2.5 - Area harvested, cane production, cane yield of estates, metayer and owner-planters by region - Island of Mauritius, 2006-2007**

Year	Area harvested (hectares)				Cane production ( tonnes)				Cane yield (tonnes/hectare)			
	Estates	Metayer	Owner planters	Total	Estates	Metayer	Owner planters	Total	Estates	Metayer	Owner planters	Total
<b>2006</b>												
North	2,934	-	12,377	<b>15,311</b>	220,729	-	916,241	<b>1,136,970</b>	75.2	-	74.0	<b>74.3</b>
South	8,899	547	12,411	<b>21,857</b>	770,665	21,193	788,693	<b>1,580,551</b>	86.6	38.7	63.5	<b>72.3</b>
East	8,624	418	8,717	<b>17,759</b>	641,683	22,921	523,880	<b>1,188,484</b>	74.4	54.8	60.1	<b>66.9</b>
West	3,604	-	1,607	<b>5,211</b>	309,708	-	118,149	<b>427,857</b>	85.9	-	73.5	<b>82.1</b>
Centre	2,553	-	4,041	<b>6,594</b>	181,488	-	233,623	<b>415,111</b>	71.1	-	57.8	<b>63.0</b>
<b>Total</b>	<b>26,614</b>	<b>965</b>	<b>39,153</b>	<b>66,732</b>	<b>2,124,273</b>	<b>44,114</b>	<b>2,580,586</b>	<b>4,748,973</b>	<b>79.8</b>	<b>45.7</b>	<b>65.9</b>	<b>71.2</b>
<b>2007</b>												
North	4,888	-	10,982	<b>15,870</b>	308,878	-	610,770	<b>919,648</b>	63.2	-	55.6	<b>57.9</b>
South	5,141	545	15,261	<b>20,947</b>	420,294	18,447	1,037,200	<b>1,475,941</b>	81.8	33.9	68.0	<b>70.5</b>
East	8,344	420	8,325	<b>17,089</b>	590,372	21,864	445,568	<b>1,057,804</b>	70.8	52.1	53.5	<b>61.9</b>
West	3,462	-	1,501	<b>4,963</b>	290,652	-	103,977	<b>394,628</b>	83.9	-	69.3	<b>79.5</b>
Centre	2,524	-	3,865	<b>6,389</b>	173,161	-	214,666	<b>387,828</b>	68.6	-	55.5	<b>60.7</b>
<b>Total</b>	<b>24,360</b>	<b>964</b>	<b>39,934</b>	<b>65,259</b>	<b>1,783,356</b>	<b>40,312</b>	<b>2,412,181</b>	<b>4,235,849</b>	<b>73.2</b>	<b>41.8</b>	<b>60.4</b>	<b>64.9</b>

**Table 2.6 - Sugar crop 2006 area harvested, cane produced, yield and sugar production by factory area**  
**Island of Mauritius**

Factory area	Area harvested (hectares)	Sugar cane production (tonnes)	Yield (tonnes/ hectare)	Sugar production (tonnes)
<b>North</b>	<b>15,311</b>	<b>1,136,970</b>	<b>74.3</b>	<b>121,004</b>
Belle Vue	9,939	776,631	78.1	82,951
Mon Loisir	5,372	360,339	67.1	38,053
<b>South</b>	<b>21,857</b>	<b>1,580,551</b>	<b>72.3</b>	<b>162,411</b>
Mon Tresor/Mon Desert	3,927	291,600	74.3	32,536
Riche en Eau	4,359	332,773	76.3	37,820
Savannah	7,128	519,674	72.9	46,969
Union St. Aubin	6,442	436,504	67.8	45,086
<b>East</b>	<b>17,759</b>	<b>1,188,484</b>	<b>66.9</b>	<b>129,801</b>
Beau Champ	8,879	606,864	68.3	66,568
Fuel	8,879	581,620	65.5	63,233
<b>West</b>	<b>5,211</b>	<b>427,857</b>	<b>82.1</b>	<b>47,484</b>
Medine	5,211	427,857	82.1	47,484
<b>Centre</b>	<b>6,594</b>	<b>415,111</b>	<b>63.0</b>	<b>44,158</b>
Mon Desert Alma	6,594	415,111	63.0	44,158
<b>Total Island</b>	<b>66,732</b>	<b>4,748,973</b>	<b>71.2</b>	<b>504,857</b>

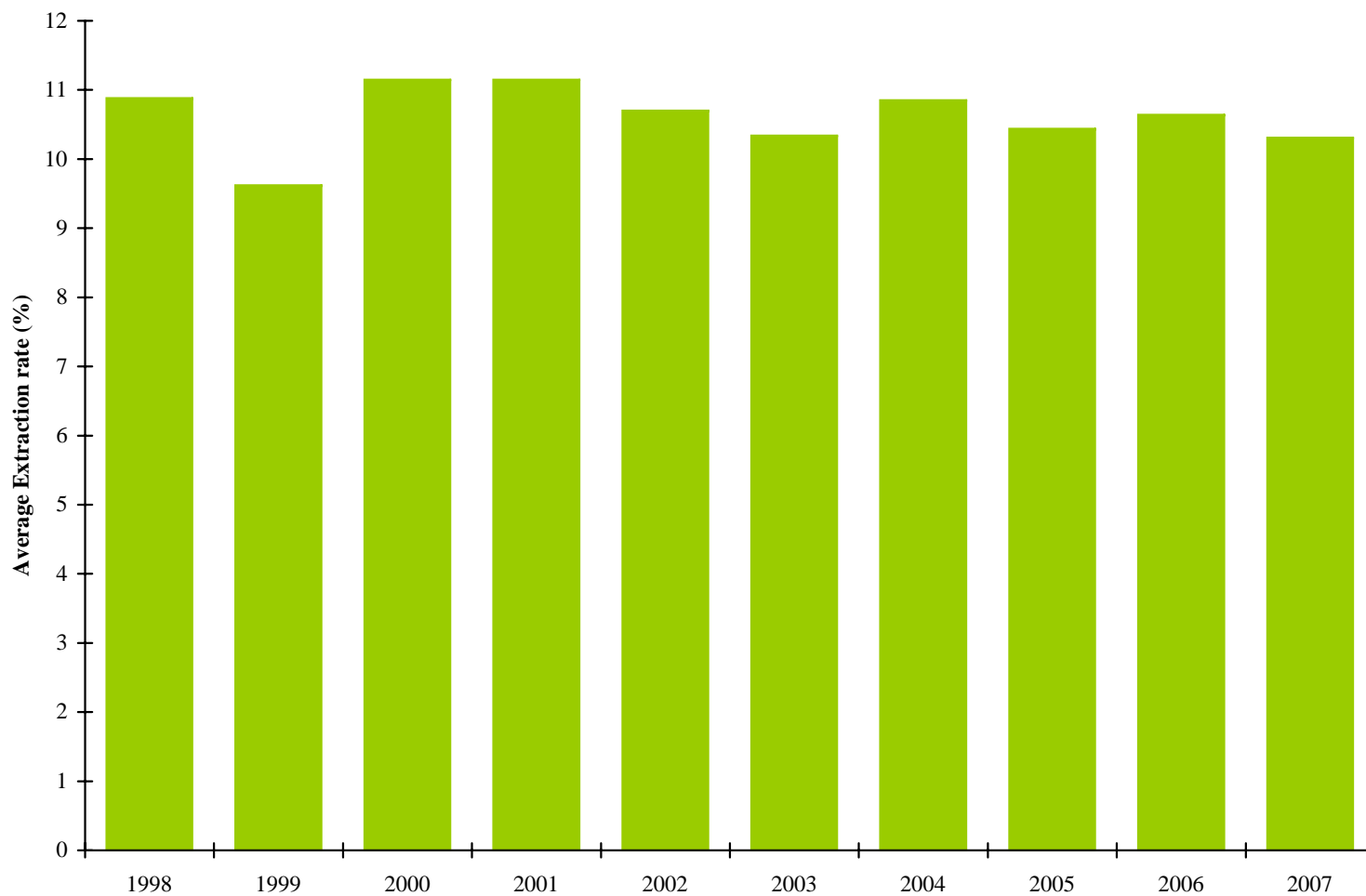
**Table 2.7 - Sugar crop 2007 area harvested, cane produced, yield and sugar production by factory area  
Island of Mauritius**

<b>Factory area</b>	<b>Area harvested (hectares)</b>	<b>Sugar cane production (tonnes)</b>	<b>Yield (tonnes/hectare)</b>	<b>Sugar production (tonnes)</b>
<b>North</b>	<b>15,870</b>	<b>919,648</b>	<b>57.9</b>	<b>81,548</b>
Belle Vue	10,675	650,052	60.9	72,372
Mon Loisir	5,196	269,595	51.9	9,176
<b>South</b>	<b>20,947</b>	<b>1,475,941</b>	<b>70.5</b>	<b>139,770</b>
Savannah	13,897	1,004,147	72.3	90,455
Union St. Aubin	7,050	471,794	66.9	49,315
<b>East</b>	<b>17,089</b>	<b>1,057,804</b>	<b>61.9</b>	<b>127,301</b>
Beau Champ	8,636	516,599	59.8	57,915
Fuel	8,453	541,205	64.0	69,386
<b>West</b>	<b>4,963</b>	<b>394,628</b>	<b>79.5</b>	<b>43,180</b>
Medine	4,963	394,628	79.5	43,180
<b>Centre</b>	<b>6,389</b>	<b>387,828</b>	<b>60.7</b>	<b>44,173</b>
Mon Desert Alma	6,389	387,828	60.7	44,173
<b>Total Island</b>	<b>65,259</b>	<b>4,235,849</b>	<b>64.9</b>	<b>435,972</b>

**Table 2.8 - Distribution of owner and tenant planters by size of plantation - Island of Mauritius, 2006 - 2007**

Size (Hectares)	2006						2007					
	Owner planters		Tenant planters		Total		Owner planters		Tenant planters		Total	
	Number	Hectares harvested	Number	Hectares harvested	Number	Hectares harvested	Number	Hectares harvested	Number	Hectares harvested	Number	Hectares harvested
Up to 0.250	7,281	1,107	36	6	7,317	1,113	5,677	1,052	30	5	5,707	1,057
0.251 - 0.500	6,338	2,399	78	31	6,416	2,430	6,171	2,274	78	32	6,249	2,306
0.501 - 1.000	6,403	4,704	177	130	6,580	4,834	6,045	4,739	175	130	6,220	4,869
1.001 - 2.000	3,241	4,488	190	268	3,431	4,756	3,769	4,410	180	257	3,949	4,667
2.001 - 5.000	1,764	5,100	124	363	1,888	5,463	1,906	4,652	125	372	2,031	5,024
5.001 - 10.000	308	2,080	17	107	325	2,187	508	1,999	18	121	526	2,120
10.001 - 25.000	84	1,179	5	60	89	1,239	94	1,188	4	47	98	1,235
25.001 - 50.000	15	506	-	-	15	506	32	513	-	-	32	513
50.001 - 100.000	16	1,116	-	-	16	1,116	14	1,051	-	-	14	1,051
100.001 - 200.000	13	1,842	-	-	13	1,842	9	1,271	-	-	9	1,271
200.001 and over	22	14,632	-	-	22	14,632	22	16,785	-	-	22	16,785
<b>Total</b>	<b>25,485</b>	<b>39,153</b>	<b>627</b>	<b>965</b>	<b>26,112</b>	<b>40,118</b>	<b>24,247</b>	<b>39,934</b>	<b>610</b>	<b>964</b>	<b>24,857</b>	<b>40,898</b>

Figure 7 - Average extraction rate of sugar - Island of Mauritius, 1998 - 2007



**Table 2.9 - Production of sugar, molasses and scum - Island of Mauritius, 1998 - 2007**

Year	SUGAR							Molasses (tonnes)	Scum (tonnes)
	Production (tonnes)			Average extraction rate (%)	Average tonnes of cane per tonne of sugar	Average yield of sugar (tonnes per hectare)	Average polarisation (degrees)		
	White	Raw	Total						
1998	4,346	624,242	628,588	10.88	9.26	8.43	98.5	168,518	302,437
1999	2,386	370,908	373,294	9.62	10.36	5.16	98.5	124,712	212,578
2000	3,061	566,228	569,289	11.15	8.98	7.79	98.5	144,027	254,568
2001	22,676	622,922	645,597	11.15	8.97	8.82	98.5	174,095	286,284
2002	7,091	513,796	520,887	10.70	9.35	7.21	98.5	140,814	277,367
2003	547	536,608	537,155	10.34	9.68	7.57	98.5	160,041	271,239
2004	-	572,316	572,316	10.85	9.23	8.21	98.5	155,763	285,298
2005	1,537	518,279	519,816	10.44	9.59	7.61	98.5	145,425	287,659
2006	-	504,857	504,857	10.64	9.40	7.57	98.5	139,621 <sup>1</sup>	261,850 <sup>1</sup>
2007	-	435,972	435,972	10.31	9.70	6.68	98.5	130,917	170,841

<sup>1</sup> Revised

**Table 2.10 - Supply and disposal of sugar - Republic of Mauritius, 1998 - 2007**

(000 tonnes tel quel)

Calendar year	Opening stock	Production	Imports	Available supplies	Exports	Domestic consumption	Loss or surplus in storage	Closing stock
<b>1998</b>	185.7	628.6	38.2	852.4	602.1	40.2	- 0.4	209.6
<b>1999</b>	209.6	373.3	35.8	618.7	534.3	40.0	- 1.1	43.3
<b>2000</b>	43.3	569.3	38.5	651.1	424.3	39.2	- 0.3	187.3
<b>2001</b>	187.3	645.6	20.1	853.0	599.4	41.2	- 0.3	212.1
<b>2002</b>	212.1	520.9	23.2	756.1	570.8	40.1	- 0.4	144.9
<b>2003</b>	144.9	537.2	40.7	722.8	517.5	41.3	- 0.6	163.4
<b>2004</b>	163.4	572.3	42.0	777.8	551.0	40.0	- 0.9	185.9
<b>2005</b>	185.9	519.8	38.4	744.1	539.4	39.4	- 0.1	165.1
<b>2006</b>	165.1	504.9	40.9	710.9	542.1	39.5	- 0.1	129.2
<b>2007</b>	129.2	436.0	35.6	600.7	442.2	39.6	- 0.1	118.9

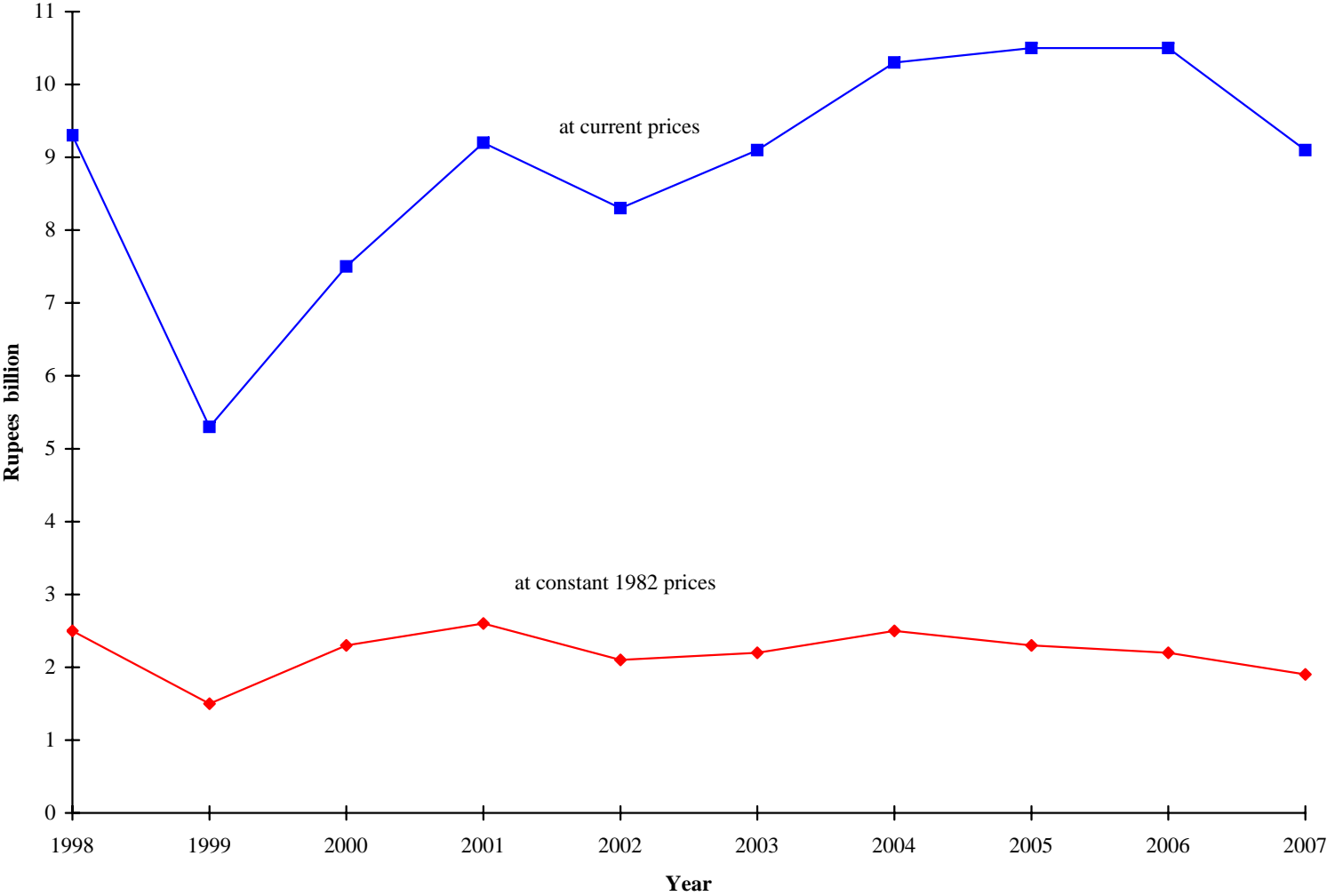
**Table 2.11 - Monthly supply and disposal of sugar - Republic of Mauritius, 2007**

(000 tonnes tel quel)

Month	Opening stock	Production	Imports	Available supplies	Exports	Domestic consumption	Loss or surplus in storage	Closing stock
January	129.2	-	2.6	131.7	56.3	3.0	-	72.5
February	72.5	-	4.0	76.5	25.5	2.6	-	48.3
March	48.3	-	-	48.3	8.2	3.3	-	36.8
April	36.8	-	4.6	41.4	7.7	3.5	-	30.2
May	30.2	-	2.6	32.7	6.8	3.4	-	22.5
June	22.5	9.7	2.4	34.6	4.4	2.9	-0.1	27.2
July	27.2	58.7	4.5	90.5	34.7	3.1	-	52.7
August	52.7	96.8	0.4	149.9	65.2	3.3	-	81.4
September	81.4	94.7	-	176.0	34.1	2.9	-	139.0
October	139.0	92.7	2.4	234.1	57.3	3.6	-	173.2
November	173.2	65.8	8.5	247.5	68.6	3.5	-	175.4
December	175.4	17.6	3.5	196.6	73.4	4.3	-	118.9
<b>Total</b>	<b>129.2</b>	<b>436.0</b>	<b>35.6</b>	<b>600.7</b>	<b>442.2</b>	<b>39.6</b>	<b>-0.1</b>	<b>118.9</b>

**Figure 8 - Value of sugar production - Island of Mauritius, 1998 - 2007**

(at current & constant prices)



**Table 2.12 - Sugar sales and revenue - Island of Mauritius, crop year : 1997/98 - 2007/08**

Crop year	Production		Exports		Local sales	
	Quantity (000 tonnes)	Value (Rs million)	Quantity (000 tonnes)	Value (Rs million)	Quantity (000 tonnes)	Value (Rs million)
<b>1997/98</b>	620.1	8,248.9	616.5	8,229.0	3.6	19.9
<b>1998/99</b>	628.5	9,229.6	624.9	9,211.2	3.6	18.4
<b>1999/00</b>	373.3	5,336.8	373.3	5,336.8	-	-
<b>2000/01</b>	569.3	7,504.4	568.6	7,500.7	0.7	3.7
<b>2001/02</b>	645.6	9,201.0	620.0	9,057.0	25.6	144.0
<b>2002/03</b>	520.9	8,301.6	509.8	8,246.6	10.3	55.0
<b>2003/04</b>	537.2	9,120.4	535.7	9,118.4	0.5	2.0
<b>2004/05</b>	572.3	10,352.5	572.1	10,351.7	0.1	0.8
<b>2005/06</b>	519.8	10,466.1	519.4	10,464.4	0.2	1.7
<b>2006/07</b>	504.9	10,496.4 <sup>1</sup>	504.9	10,495.5 <sup>1</sup>	0.1	0.9
<b>2007/08</b>	436.0	9,148.0	436.0	9,148.0	-	-

<sup>1</sup> Revised

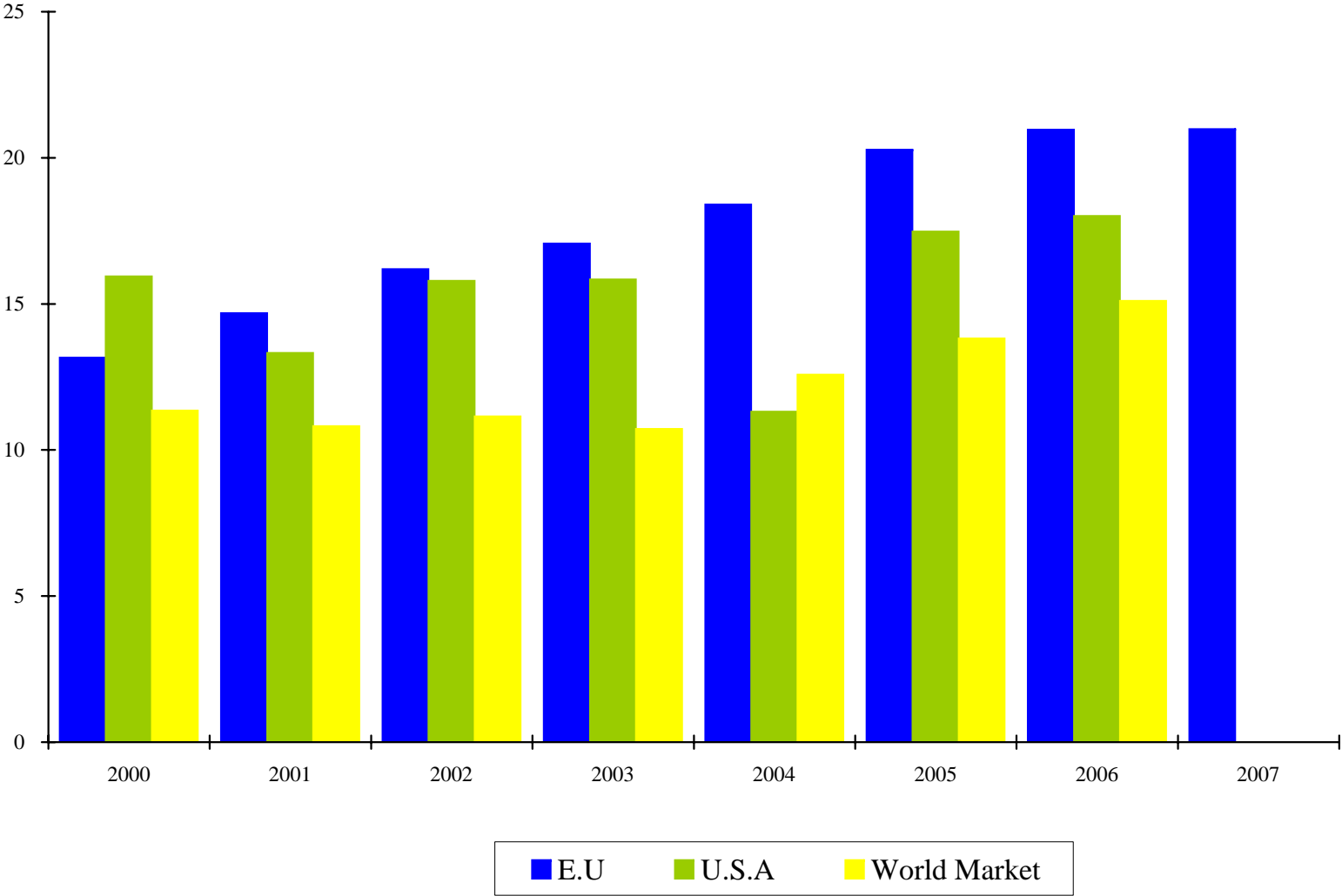
Notes:

1. Harvesting generally extends from June to December, while export and local sales are spread over the period 1st July to 30th June the following year.
2. Production may not tally with exports and local sales due to loss or surplus in storage.
3. Data do not include imported sugar destined for local market

Source: Mauritius Sugar Syndicate

**Figure 9 - Average export price of sugar - Island of Mauritius, 2000 - 2007**  
(by main markets)

Rs '000/tonne



**Table 2.13 - Sugar exports <sup>1</sup> by main markets - Island of Mauritius, crop year : 2004/2005 - 2007/2008**

Markets	2004/2005			2005/2006			2006/2007 <sup>2</sup>			2007/2008 <sup>3</sup>		
	Quantity (000 tonnes)	Value (Rs million)	Average price (Rs/tonne)	Quantity (000 tonnes)	Value (Rs million)	Average price (Rs/tonne)	Quantity (000 tonnes)	Value (Rs million)	Average price (Rs/tonne)	Quantity (000 tonnes)	Value (Rs million)	Average price (Rs/tonne)
<b>European Union</b>	<b>543</b>	<b>10,011</b>	<b>18,396</b>	<b>501</b>	<b>10,179</b>	<b>20,273</b>	<b>483</b>	<b>10,154</b>	<b>20,964</b>	<b>436</b>	<b>9,148</b>	<b>20,982</b>
Sugar Protocol	526	9,734	18,454	487	9,930	20,331	483	10,154	20,964	436	9,148	20,982
Special Preferential Sugar	17	277	16,566	14	249	18,194	-	-	-	-	-	-
<b>U.S.A</b>	<b>22</b>	<b>247</b>	<b>11,308</b>	<b>7</b>	<b>134</b>	<b>17,474</b>	<b>4</b>	<b>75</b>	<b>18,007</b>	-	-	-
<b>World market</b>	<b>7</b>	<b>93</b>	<b>12,580</b>	<b>11</b>	<b>152</b>	<b>13,812</b>	<b>18</b>	<b>267</b>	<b>15,099</b>	-	-	-
<b>Total</b>	<b>572</b>	<b>10,352</b>	<b>18,051</b>	<b>519</b>	<b>10,464</b>	<b>20,095</b>	<b>505</b>	<b>10,496</b>	<b>20,787</b>	<b>436</b>	<b>9,148</b>	<b>20,982</b>

<sup>1</sup> Quantity tel quel and average price of sugar at 98.5° polarisation

<sup>2</sup> Revised

<sup>3</sup> Projected

Source: Mauritius Sugar Syndicate

**Table 2.14 - Earnings<sup>1</sup> of sugar producers - Ex-syndicate, before charging sugar insurance premium - Island of Mauritius, 2003 - 2007**

(Rupees/tonne of sugar basis 98.5° polarisation)

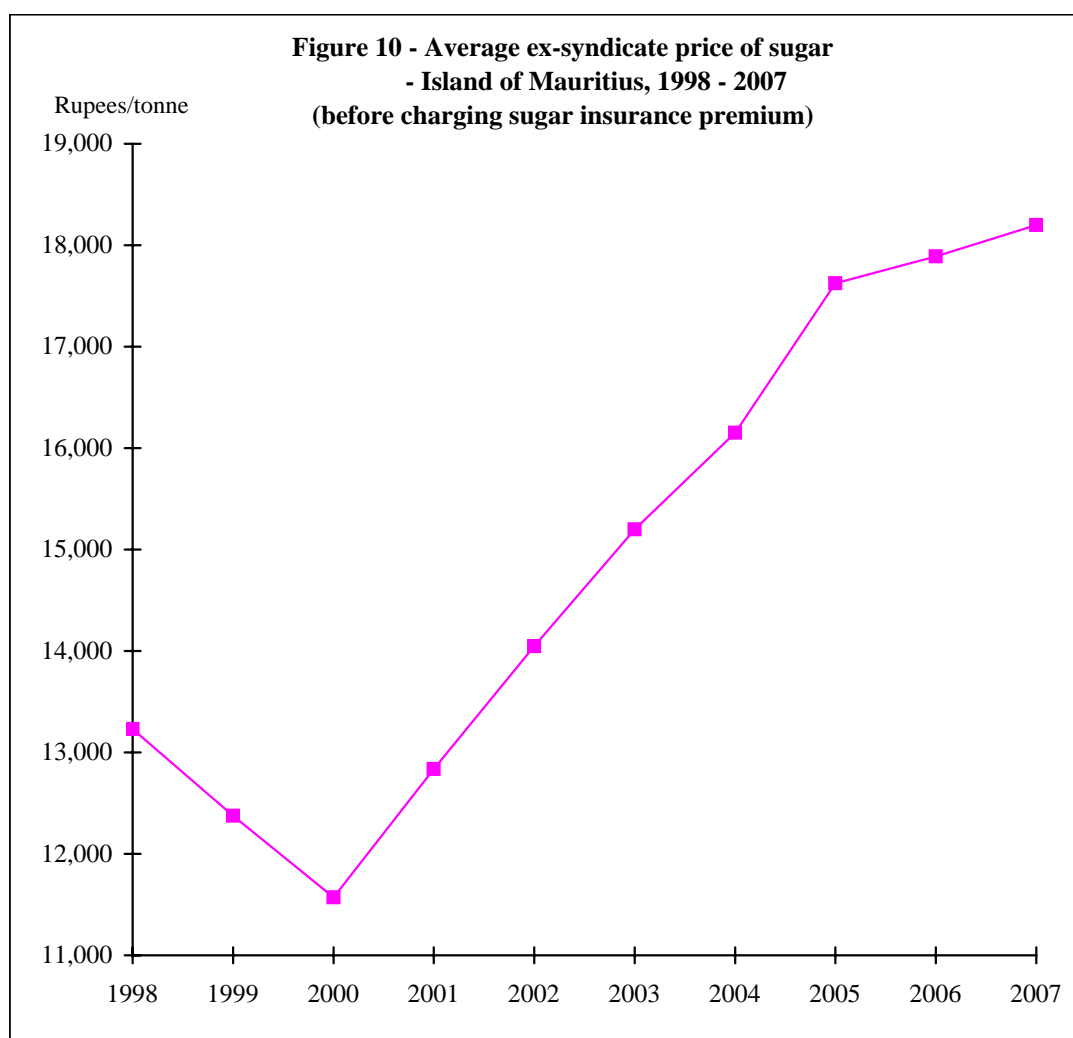
	2003	2004	2005	2006 <sup>2</sup>	2007 <sup>3</sup>
<b>Price paid to all producers</b>	15,200	16,150	17,626	17,891	18,200
<b>Index (Base 1997 = 100)</b>	127.6	135.6	148.0	150.2	152.8
<b>Annual growth rate of earnings of sugar production (%)</b>	+8.2	+6.3	+9.1	+1.5	+1.7

<sup>1</sup> Excludes the element of bagasse

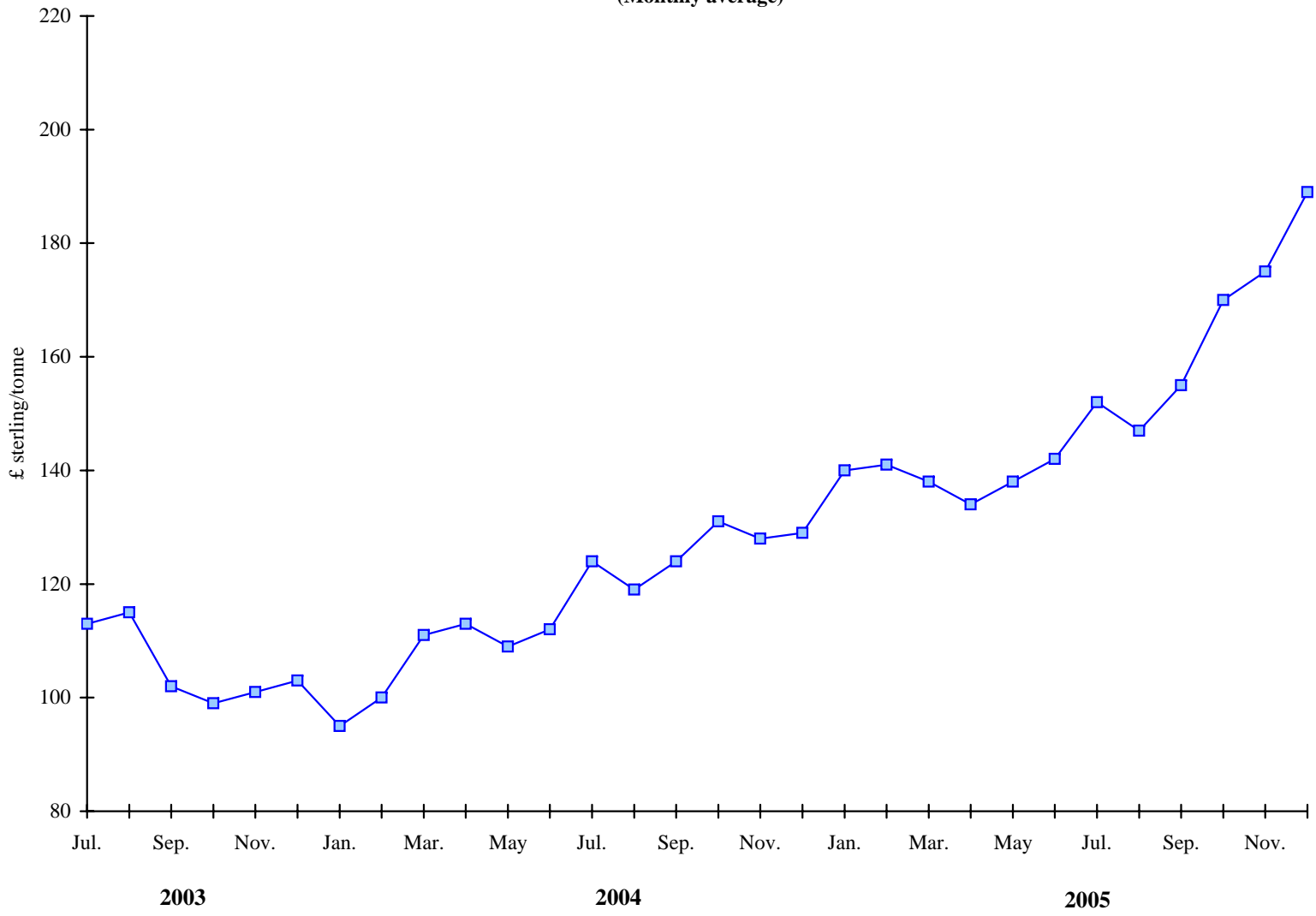
<sup>2</sup> Revised

<sup>3</sup> Provisional

Source: Mauritius Sugar Syndicate



**Figure 11 - London Daily Price of sugar, f.o.b value £ sterling/tonne, July 2003 - December 2005  
(Monthly average)**



**Table 2.15 - Monthly average price of sugar at f.o.b value (London daily price), 1998 - 2007**

(£ Sterling/tonne)

Year	January	February	March	April	May	June	July	August	September	October	November	December	Average price	Index 1992 = 100
1998	171	158	144	141	139	121	129	128	106	108	119	119	132	84
1999	120	104	95	88	93	97	90	93	104	104	104	98	99	63
2000	90	87	86	98	116	137	160	170	170	178	171	167	136	87
2001	170	166	157	151	164	159	153	140	135	117	134	136	148	95
2002	133	118	120	121	107	97	105	105	113	123	125	126	116	74
2003	121	139	132	127	118	109	113	115	102	99	101	103	115	74
2004	95	100	111	113	109	112	124	119	124	131	130	129	116	75
2005	140	141	138	134	138	142	152	147	155	170	175	189	152	98
2006	N.A	N.A	N.A	N.A	N.A	N.A	N.A	N.A	N.A	N.A	N.A	N.A	N.A	N.A
2007	N.A	N.A	N.A	N.A	N.A	N.A	N.A	N.A	N.A	N.A	N.A	N.A	N.A	N.A

Note: Figures for 2006 and onwards will not be available

Source: Mauritius Sugar Syndicate

**Table 2.16- Employment by sugar estates and large sugar cane planters<sup>1</sup> and by sex-Island of Mauritius, 2004-2007 (last Thursday of March)**

SEX	March 2004			March 2005			March 2006			March 2007		
	Estate	Planters	Total	Estate	Planters	Total	Estate	Planters	Total	Estate	Planters	Total
Male	10,955	1,080	<b>12,035</b>	10,281	965	<b>11,246</b>	10,378	991	<b>11,369</b>	10,533	966	<b>11,499</b>
Female	2,042	745	<b>2,787</b>	1,919	638	<b>2,557</b>	1,819	609	<b>2,428</b>	1,877	620	<b>2,497</b>
<b>Total</b>	<b>12,997</b>	<b>1,825</b>	<b>14,822</b>	<b>12,200</b>	<b>1,603</b>	<b>13,803</b>	<b>12,197</b>	<b>1,600</b>	<b>13,797</b>	<b>12,410</b>	<b>1,586</b>	<b>13,996</b>

<sup>1</sup> cultivating 10 hectares or more