

SECTION 3

LIVE BIRTHS

Table 3.1 - Live births registered by month and sex - Republic of Mauritius^{1/}, Island of Mauritius & Island of Rodrigues - 2007

Month	Republic of Mauritius			Island of Mauritius			Island of Rodrigues		
	Both sexes	Male	Female	Both sexes	Male	Female	Both sexes	Male	Female
January	1,387	707	680	1,316	674	642	71	33	38
February	1,040	543	497	982	520	462	58	23	35
March	1,448	751	697	1,403	726	677	45	25	20
April	1,568	809	759	1,487	766	721	81	43	38
May	1,694	868	826	1,602	829	773	92	39	53
June	1,527	752	775	1,451	715	736	76	37	39
July	1,543	753	790	1,457	718	739	86	35	51
August	1,538	803	735	1,441	750	691	97	53	44
September	1,420	739	681	1,359	711	648	61	28	33
October	1,474	737	737	1,408	697	711	66	40	26
November	1,227	619	608	1,180	595	585	47	24	23
December	1,168	595	573	1,104	563	541	64	32	32
Year	17,034	8,676	8,358	16,190	8,264	7,926	844	412	432

1/ excluding Agalega & St Brandon

Table 3.2 (a) - Live births by month of registration - Republic of Mauritius^{1/}, 1998 - 2007

Month	1998	1999	2000	2001	2002	2003	2004	2005	2006	2007
January	1,563	1,533	1,670	1,938	1,687	1,750	1,606	1,526	1,413	1,387
February	1,412	1,303	1,491	1,487	1,523	1,501	1,382	1,456	1,301	1,040
March	1,763	1,971	1,638	1,584	1,641	1,654	1,819	1,761	1,559	1,448
April	1,693	1,855	1,563	1,687	1,758	1,741	1,678	1,629	1,488	1,568
May	1,641	1,756	1,841	1,832	1,868	1,697	1,778	1,659	1,618	1,694
June	1,857	1,821	1,826	1,637	1,612	1,659	1,659	1,598	1,686	1,527
July	1,695	1,674	1,788	1,762	1,775	1,805	1,703	1,573	1,454	1,543
August	1,678	1,858	1,765	1,715	1,655	1,554	1,647	1,821	1,590	1,538
September	1,698	1,810	1,657	1,477	1,665	1,673	1,634	1,582	1,491	1,420
October	1,566	1,630	1,815	1,737	1,767	1,648	1,575	1,537	1,496	1,474
November	1,481	1,633	1,662	1,500	1,509	1,225	1,413	1,390	1,369	1,227
December	1,387	1,467	1,489	1,340	1,523	1,436	1,336	1,288	1,139	1,168
Year	19,434	20,311	20,205	19,696	19,983	19,343	19,230	18,820	17,604	17,034

^{1/} excluding Agalega and St Brandon

Table 3.2 (b) - Live births by month of registration - Island of Mauritius, 1998 - 2007

Month	1998	1999	2000	2001	2002	2003	2004	2005	2006	2007
January	1,517	1,494	1,601	1,851	1,613	1,667	1,518	1,441	1,329	1,316
February	1,364	1,254	1,442	1,418	1,469	1,437	1,319	1,398	1,241	982
March	1,693	1,905	1,571	1,526	1,571	1,579	1,731	1,669	1,487	1,403
April	1,637	1,770	1,496	1,614	1,685	1,671	1,590	1,561	1,437	1,487
May	1,587	1,696	1,766	1,758	1,800	1,621	1,686	1,576	1,557	1,602
June	1,794	1,738	1,749	1,591	1,544	1,576	1,577	1,513	1,586	1,451
July	1,628	1,625	1,714	1,687	1,696	1,739	1,621	1,498	1,373	1,457
August	1,617	1,788	1,707	1,638	1,577	1,497	1,570	1,737	1,497	1,441
September	1,641	1,739	1,594	1,421	1,601	1,601	1,565	1,507	1,421	1,359
October	1,511	1,573	1,750	1,674	1,700	1,581	1,501	1,451	1,420	1,408
November	1,413	1,561	1,604	1,432	1,444	1,182	1,338	1,343	1,298	1,180
December	1,342	1,400	1,404	1,274	1,469	1,367	1,269	1,230	1,077	1,104
Year	18,744	19,543	19,398	18,884	19,169	18,518	18,285	17,924	16,723	16,190

Table 3.2(c) - Live births by month of registration - Island of Rodrigues, 1998 - 2007

Month	1998	1999	2000	2001	2002	2003	2004	2005	2006	2007
January	46	39	69	87	74	83	88	85	84	71
February	48	49	49	69	54	64	63	58	60	58
March	70	66	67	58	70	75	88	92	72	45
April	56	85	67	73	73	70	88	68	51	81
May	54	60	75	74	68	76	92	83	61	92
June	63	83	77	46	68	83	82	85	100	76
July	67	49	74	75	79	66	82	75	81	86
August	61	70	58	77	78	57	77	84	93	97
September	57	71	63	56	64	72	69	75	70	61
October	55	57	65	63	67	67	74	86	76	66
November	68	72	58	68	65	43	75	47	71	47
December	45	67	85	66	54	69	67	58	62	64
Year	690	768	807	812	814	825	945	896	881	844

Table 3.3 - Live births registered by geographical district - Republic of Mauritius^{1/}, 1998 - 2007

Geographical district	1998	1999	2000	2001	2002	2003	2004	2005	2006	2007
Port Louis	2,303	2,553	2,640	2,436	2,532	2,373	2,239	2,026	1,937	1,878
Pamplemousses	2,012	2,061	2,028	2,033	2,095	1,966	2,071	2,109	1,973	1,894
Riviere du Rempart	1,742	1,812	1,778	1,750	1,724	1,715	1,743	1,499	1,514	1,524
Flacq	2,317	2,370	2,444	2,354	2,312	2,222	2,237	2,165	1,966	1,899
Grand Port	1,812	1,983	1,914	1,791	1,815	1,746	1,701	1,813	1,533	1,515
Savanne	1,055	1,128	1,101	1,093	1,135	1,057	1,079	1,084	970	964
Plaines Wilhems	5,425	5,499	5,236	5,204	5,275	5,102	4,897	4,860	4,558	4,441
Moka	1,105	1,131	1,228	1,123	1,194	1,164	1,143	1,130	1,101	1,010
Black River	973	1,006	1,029	1,100	1,087	1,173	1,175	1,238	1,171	1,065
Island of Mauritius	18,744	19,543	19,398	18,884	19,169	18,518	18,285	17,924	16,723	16,190
Island of Rodrigues	690	768	807	812	814	825	945	896	881	844
Republic of Mauritius	19,434	20,311	20,205	19,696	19,983	19,343	19,230	18,820	17,604	17,034

1/ excluding Agalega and St Brandon

Table 3.4 - Crude birth rate by geographical district - Republic of Mauritius^{1/}, 1998 - 2007

Geographical district	1998	1999	2000	2001	2002	2003	2004	2005	2006	2007
Port Louis	16.7	18.5	19.0	18.8	19.5	18.2	17.2	15.5	14.9	14.4
Pamplemousses	17.4	17.6	17.0	16.3	16.6	15.3	16.0	16.1	14.9	14.1
Riviere du Rempart	18.0	18.4	17.9	17.4	16.9	16.6	16.7	14.3	14.3	14.3
Flacq	18.9	19.0	19.5	18.2	17.7	16.8	16.7	16.0	14.4	13.8
Grand Port	17.1	18.5	17.7	16.5	16.6	15.8	15.3	16.1	13.5	13.3
Savanne	16.1	17.1	16.6	16.2	16.7	15.5	15.7	15.7	13.9	13.8
Plaines Wilhems	15.3	15.3	14.5	14.3	14.4	13.8	13.1	13.0	12.1	11.7
Moka	15.0	15.1	16.2	14.6	15.5	14.9	14.5	14.3	13.8	12.6
Black River	18.5	18.6	18.7	17.6	17.0	17.9	17.5	18.0	16.6	14.8
Island of Mauritius	16.7	17.2	16.9	16.2	16.3	15.6	15.3	14.9	13.8	13.2
Island of Rodrigues	19.6	21.7	22.6	22.6	22.5	22.6	25.8	24.3	23.8	22.6
Republic of Mauritius	16.8	17.3	17.0	16.4	16.5	15.8	15.6	15.1	14.1	13.5

1/ excluding Agalega and St. Brandon

Table 3.5 - Live births registered by Municipal Council Area^{1/} - Republic of Mauritius^{2/}, 1998 - 2007

Municipal Council Area (MCA)	1998	1999	2000	2001	2002	2003	2004	2005	2006	2007
Port Louis	2,534	2,697	2,835	2,619	2,701	2,513	2,413	2,301	2,184	2,085
Beau Bassin/Rose Hill	1,586	1,606	1,478	1,482	1,509	1,448	1,470	1,396	1,308	1,292
Quatre-Bornes	1,105	1,068	1,055	1,021	1,074	1,063	959	941	921	902
Vacoas/Phoenix	1,575	1,625	1,493	1,485	1,489	1,487	1,379	1,437	1,301	1,277
Curepipe	1,086	1,144	1,133	1,161	1,157	1,069	1,047	1,040	977	911
Total urban	7,886	8,140	7,994	7,768	7,930	7,580	7,268	7,115	6,691	6,467
Total rural	11,548	12,171	12,211	11,928	12,053	11,763	11,962	11,705	10,913	10,567
Republic of Mauritius	19,434	20,311	20,205	19,696	19,983	19,343	19,230	18,820	17,604	17,034
Percentage urban	40.6	40.1	39.6	39.4	39.7	39.2	37.8	37.8	38.0	38.0

1/ Prior to 1st July 1991, figures by MCA are according to proclaimed boundaries altered in 1963 (Procl. No. 12 & 13), in 1965 (Procl. No. 23), and in 1967 (Procl. No. 2).

As from 1st July 1991, boundaries have been further enlarged (Procl. No 8 of 1990).

2/ excluding Agalega and Saint Brandon

Table 3.6 - Live births occurred by sex - Republic of Mauritius^{1/}, Island of Mauritius & Island of Rodrigues, 1998 - 2007

Year	Republic of Mauritius			Island of Mauritius			Island of Rodrigues		
	Both sexes	Male	Female	Both sexes	Male	Female	Both sexes	Male	Female
1998	19,270	9,832	9,438	18,590	9,488	9,102	680	344	336
1999	20,399	10,469	9,930	19,611	10,076	9,535	788	393	395
2000	20,237	10,368	9,869	19,430	9,955	9,475	807	413	394
2001	19,504	9,934	9,570	18,705	9,521	9,184	799	413	386
2002	19,799	10,034	9,765	18,976	9,601	9,375	823	433	390
2003	19,165	9,802	9,363	18,355	9,381	8,974	810	421	389
2004	19,102	9,718	9,384	18,153	9,239	8,914	949	479	470
2005	18,578	9,468	9,110	17,707	9,023	8,684	871	445	426
2006	17,320	8,882	8,438	16,467	8,444	8,023	853	438	415
2007	16,894	8,618	8,276	16,046	8,207	7,839	848	411	437

1/ excluding Agalega and St. Brandon

Table 3.7(a) - Live births occurred by month and sex - Republic of Mauritius^{1/}, 2005 - 2007

Month	2005			2006			2007		
	Both sexes	Male	Female	Both sexes	Male	Female	Both sexes	Male	Female
January	1,412	753	659	1,379	676	703	1,424	738	686
February	1,458	739	719	1,267	630	637	1,039	542	497
March	1,767	885	882	1,508	819	689	1,427	742	685
April	1,624	820	804	1,469	761	708	1,541	792	749
May	1,653	825	828	1,605	823	782	1,674	859	815
June	1,589	777	812	1,661	828	833	1,502	741	761
July	1,567	809	758	1,430	739	691	1,523	742	781
August	1,814	959	855	1,569	819	750	1,524	796	728
September	1,561	786	775	1,477	759	718	1,405	730	675
October	1,506	753	753	1,485	761	724	1,458	730	728
November	1,376	714	662	1,344	678	666	1,218	616	602
December	1,251	648	603	1,126	589	537	1,159	590	569
Year	18,578	9,468	9,110	17,320	8,882	8,438	16,894	8,618	8,276

1/ excluding Agalega & St Brandon

Table 3.7(b) - Live births occurred by month and sex - Island of Mauritius, 2005 - 2007

Month	2005			2006			2007		
	Both sexes	Male	Female	Both sexes	Male	Female	Both sexes	Male	Female
January	1,343	717	626	1,308	642	666	1,341	702	639
February	1,398	706	692	1,207	602	605	983	519	464
March	1,676	841	835	1,437	783	654	1,383	718	665
April	1,556	780	776	1,419	731	688	1,460	749	711
May	1,570	779	791	1,545	792	753	1,583	820	763
June	1,506	735	771	1,564	777	787	1,426	704	722
July	1,492	768	724	1,353	697	656	1,438	708	730
August	1,730	913	817	1,478	774	704	1,427	743	684
September	1,488	756	732	1,408	725	683	1,345	703	642
October	1,420	707	713	1,410	725	685	1,393	690	703
November	1,329	695	634	1,274	646	628	1,172	593	579
December	1,199	626	573	1,064	550	514	1,095	558	537
Year	17,707	9,023	8,684	16,467	8,444	8,023	16,046	8,207	7,839

Table 3.7(c) - Live births occurred by month and sex - Island of Rodrigues, 2005 - 2007

Month	2005			2006			2007		
	Both sexes	Male	Female	Both sexes	Male	Female	Both sexes	Male	Female
January	69	36	33	71	34	37	83	36	47
February	60	33	27	60	28	32	56	23	33
March	91	44	47	71	36	35	44	24	20
April	68	40	28	50	30	20	81	43	38
May	83	46	37	60	31	29	91	39	52
June	83	42	41	97	51	46	76	37	39
July	75	41	34	77	42	35	85	34	51
August	84	46	38	91	45	46	97	53	44
September	73	30	43	69	34	35	60	27	33
October	86	46	40	75	36	39	65	40	25
November	47	19	28	70	32	38	46	23	23
December	52	22	30	62	39	23	64	32	32
Year	871	445	426	853	438	415	848	411	437

Table 3.8(a) - Live births occurred by age of mother and live birth order - Republic of Mauritius^{1/}, 2006 & 2007

Year	Age of mother	Live birth order						Total
		First	Second	Third	Fourth	Fifth	Sixth & over	
2006	15-19	1,466	199	27	2	-	-	1,694
	20-24	3,163	1,218	245	41	8	-	4,675
	25-29	2,875	2,259	686	140	31	13	6,004
	30-34	1,058	1,171	623	171	48	27	3,098
	35-39	400	408	368	135	61	54	1,426
	40-44	141	75	77	60	23	18	394
	45-49	11	6	5	3	2	2	29
	15 - 49	9,114	5,336	2,031	552	173	114	17,320
2007	15-19	1,569	232	27	-	-	-	1,828
	20-24	2,902	1,201	227	38	4	2	4,374
	25-29	2,645	2,250	684	140	43	9	5,771
	30-34	993	1,298	588	184	58	27	3,148
	35-39	393	360	339	153	59	45	1,349
	40-44	115	96	87	42	29	35	404
	45-49	5	2	4	4	2	3	20
	15 - 49	8,622	5,439	1,956	561	195	121	16,894

1/ excluding Agalega and St Brandon

Note: Live births occurring to mothers less than 15 years have been included in the age group (15-19) whilst those occurring to mothers aged 50 years and above in the age group (45-49). Births for age "Not stated" and birth order "Not stated" have been prorated. Consequently, the number of births occurred by birth order for the Island of Mauritius and Island of Rodrigues may not exactly add up to that for the Republic of Mauritius

Table 3.8(b) - Live births occurred by age of mother and live birth order - Island of Mauritius, 2006 & 2007

Year	Age of mother	Live birth order						Total
		First	Second	Third	Fourth	Fifth	Sixth & over	
2006	15-19	1,351	178	26	2	-	-	1,557
	20-24	3,012	1,165	228	38	8	-	4,451
	25-29	2,770	2,159	647	134	30	12	5,752
	30-34	1,022	1,133	593	156	40	23	2,967
	35-39	376	395	345	124	53	48	1,341
	40-44	133	70	75	57	19	17	371
	45-49	10	6	5	4	1	2	28
	15 - 49	8,674	5,106	1,919	515	151	102	16,467
2007	15-19	1,465	213	23	-	-	-	1,701
	20-24	2,790	1,147	214	35	2	2	4,190
	25-29	2,549	2,159	634	130	41	9	5,522
	30-34	959	1,243	544	161	54	23	2,984
	35-39	385	343	319	134	47	32	1,260
	40-44	110	93	81	37	22	29	372
	45-49	5	2	3	4	2	1	17
	15 - 49	8,263	5,200	1,818	501	168	96	16,046

Note: Live births occurring to mothers less than 15 years have been included in the age group (15 -19) whilst those occurring to mothers aged 50 years and above in the age group (45 - 49). Births for age "Not stated" and birth order "Not stated" have been prorated.

Table 3.8(c) - Live births occurred by age of mother and live birth order - Island of Rodrigues, 2006 & 2007

Year	Age of mother	Live birth order						Total
		First	Second	Third	Fourth	Fifth	Sixth & over	
2006	15-19	119	21	1	-	-	-	141
	20-24	152	53	17	2	-	-	224
	25-29	102	100	40	6	1	1	250
	30-34	35	37	31	15	8	3	129
	35-39	24	13	22	12	8	6	85
	40-44	7	5	1	4	5	1	23
	45-49	-	-	-	-	1	-	1
	15 - 49	439	229	112	39	23	11	853
2007	15-19	108	19	4	-	-	-	131
	20-24	109	54	13	2	2	-	180
	25-29	91	89	51	10	3	-	244
	30-34	31	53	46	25	5	4	164
	35-39	6	16	21	21	14	14	92
	40-44	6	2	6	6	8	5	33
	45-49	-	-	1	-	-	-	4
	15 - 49	351	233	142	64	32	26	848

Note: Live births occurring to mothers less than 15 years have been included in the age group (15 -19) whilst those occurring to mothers aged 50 years and above in the age group (45 - 49). Births for age "Not stated" and birth order "Not stated" have been prorated.

Table 3.9(a) - Age specific fertility rates ^{1/} by age of mother and live birth order - Republic of Mauritius^{2/}, 1990 & 2000

Year	Age of mother	Live birth order						Total
		First	Second	Third	Fourth	Fifth	Sixth & over	
1 9 9 0 0	15 - 19	37.9	6.7	0.6*	-	-	-	45.2
	20 - 24	87.9	47.6	9.6	1.8	0.3*	-	147.2
	25 - 29	50.7	51.8	24.8	7.9	2.2	0.7	138.1
	30 - 34	15.6	26.3	21.3	10.1	4.2	2.9	80.4
	35 - 39	5.7	7.7	10.2	7.2	3.6	4.7	39.1
	40 - 44	1.6	1.8	2.3	1.3	1.6	2.8	11.4
	45 - 49	0.3*	-	0.2*	0.4*	0.3*	0.6*	1.8
G.F.R	15 - 49	34.1	24.1	11.3	4.5	1.8	1.6	77.4
2 0 0 0	15 - 19	33.0	5.5	0.4*	-	-	-	38.9
	20 - 24	75.9	38.3	6.2	1.0	0.1*	-	121.5
	25 - 29	43.2	54.7	17.4	4.2	0.7	0.2*	120.4
	30 - 34	15.7	31.1	18.9	6.2	1.9	1.3	75.1
	35 - 39	6.3	11.1	8.8	4.5	1.7	1.8	34.2
	40 - 44	1.3	2.0	1.8	1.5	0.7	0.8	8.1
	45 - 49	0.1*	0.1*	0.1*	0.1*	-	0.2*	0.6*
G.F.R	15 - 49	27.0	21.3	7.9	2.5	0.8	0.6	60.1

1/ in calculating the rates, live births occurring to mothers aged less than 15 years have been included in the age group (15-19) whilst those occurring to mothers aged 50 years and above in the age group (45-49). Births for age "Not stated" and birth order "Not stated" have been prorated.

2/ excluding Agalega and St Brandon

* rates based on a small number of events (<30)

Table 3.9(b) - Age specific fertility rates ^{1/} by age of mother and live birth order, Island of Mauritius, 1990 & 2000

Year	Age of mother	Live birth order						Total
		First	Second	Third	Fourth	Fifth	Sixth & over	
1 9 9 0	15 - 19	37.0	6.5	0.6*	-	-	-	44.1
	20 - 24	88.0	47.5	9.4	1.7	0.3*	-	146.9
	25 - 29	51.2	52.1	24.5	7.4	1.9	0.6	137.7
	30 - 34	15.7	26.6	21.3	10.0	3.7	2.5	79.8
	35 - 39	5.7	7.9	10.2	7.0	3.5	4.1	38.4
	40 - 44	1.5	1.8	2.3	1.2	1.6	2.3	10.7
	45 - 49	0.3*	-	0.1*	0.4*	0.2*	0.4*	1.4
G.F.R	15 - 49	34.0	24.2	11.2	4.3	1.6	1.4	76.7
2 0 0 0	15 - 19	32.0	5.2	0.5	-	-	-	37.7
	20 - 24	75.9	38.4	6.3	0.9	0.1*	-	121.6
	25 - 29	43.4	54.3	17.0	4.0	0.7	0.2*	119.6
	30 - 34	15.8	31.3	18.5	5.9	1.8	1.1	74.4
	35 - 39	6.4	11.1	8.7	4.2	1.5	1.5	33.4
	40 - 44	1.3	2.0	1.7	1.4	0.6	0.5	7.5
	45 - 49	0.2*	0.1*	0.1*	0.1*	-	0.1*	0.6*
G.F.R	15 - 49	26.8	21.3	7.7	2.4	0.7	0.5	59.4

1/ in calculating the rates, live births occurring to mothers aged less than 15 years have been included in the age group (15-19) whilst those occurring to mothers aged 50 years and above in the age group (45-49). Births for age "Not stated" and birth order "Not stated" have been prorated.

* rates based on a small number of events (<30)

Table 3.9(c) - Age specific fertility rates ^{1/} by age of mother and live birth order - Island of Rodrigues, 1990 & 2000

Year	Age of mother	Live birth order						Total
		First	Second	Third	Fourth	Fifth	Sixth & over	
1 9 9 0	15 - 19	62.3	11.4	1.5*	-	-	-	75.2
	20 - 24	75.4	48.4	21.4	5.4*	1.5*	-	152.2
	25 - 29	22.8	46.6	37.2	24.8	12.6	6.3*	150.3
	30 - 34	6.5*	15.2	19.5	18.9	23.9	26.7	110.7
	35 - 39	4.7*	4.7*	8.9*	13.6	11.5	51.1	94.5
	40 - 44	4.2*	2.1*	3.8*	2.2*	4.2*	30.3	46.8
	45 - 49	-	-	0.5*	0.9*	2.4*	4.8*	8.6
G.F.R	15 - 49	35.3	22.5	14.4	9.2	7.2	12.4	101.0
2 0 0 0	15 - 19	53.2	11.4*	0.4*	-	-	-	65.0
	20 - 24	76.0	35.7	3.9*	1.7*	-	-	117.3
	25 - 29	38.1	66.8	30.9	8.6*	1.4*	-	145.8
	30 - 34	12.1*	21.7*	37.8	20.1*	4.8*	6.4*	102.9
	35 - 39	2.5*	10.2*	12.8*	19.6*	7.7*	14.5*	67.3
	40 - 44	1.0*	2.9*	5.8*	4.8*	4.8*	14.4*	33.7
	45 - 49	-	-	-	-	-	4.1*	4.1*
G.F.R	15 - 49	34.1	23.3	12.3	7.0	2.3	4.5	83.5

1/ in calculating the rates, live births occurring to mothers aged less than 15 years have been included in the age group (15-19) whilst those occurring to mothers aged 50 years and above in the age group (45-49). Births for age "Not stated" and birth order "Not stated" have been prorated.

* rates based on a small number of events (<30)

Table 3.10(a) - Age specific fertility rates ^{1/} by age of mother and live birth order - Republic of Mauritius^{2/}, 2006 ^{3/} & 2007

Year	Age of mother	Live birth order						Total
		First	Second	Third	Fourth	Fifth	Sixth & over	
2006	15 - 19	29.3	4.0	0.5*	0.1*	0.0*	0.0*	33.9
	20 - 24	65.7	25.3	5.1	0.8	0.2*	0.0*	97.1
	25 - 29	50.6	39.8	12.1	2.5	0.6	0.2*	105.8
	30 - 34	22.1	24.4	13.0	3.6	1.0	0.6*	64.7
	35 - 39	8.4	8.6	7.7	2.8	1.3	1.1	29.9
	40 - 44	2.7	1.5	1.5	1.2	0.4	0.4*	7.7
	45 - 49	0.3*	0.1*	0.1*	0.1*	0.0*	0.0*	0.6*
G.F.R	15 - 49	26.3	15.4	5.9	1.6	0.5	0.3	50.0
2007	15 - 19	30.4	4.5	0.5*	0.0*	0.0*	0.0*	35.4
	20 - 24	62.6	25.9	4.9	0.8	0.1*	0.0*	94.3
	25 - 29	46.6	39.6	12.1	2.5	0.7	0.2*	101.7
	30 - 34	20.2	26.4	12.0	3.7	1.2	0.5*	64.0
	35 - 39	8.3	7.6	7.2	3.3	1.3	1.0	28.7
	40 - 44	2.3	1.9	1.7	0.8	0.6*	0.7	8.0
	45 - 49	0.1*	0.0*	0.1*	0.1*	0.0*	0.1*	0.4*
G.F.R	15 - 49	24.8	15.7	5.6	1.6	0.6	0.3	48.6

1/ in calculating the rates, live births occurring to mothers less than 15 years have been included in the age group (15-19) whilst those occurring to mothers aged 50 years and above in the age group (45 - 49). Births for age "Not stated" and birth order "Not stated" have been prorated.

2/ excluding Agalega and St Brandon

3/ revised

* rates based on a small number of events (<30)

Table 3.10(b) - Age specific fertility rates ^{1/} by age of mother and live birth order - Island of Mauritius, 2006^{2/} & 2007

Year	Age of mother	Live birth order						Total
		First	Second	Third	Fourth	Fifth	Sixth & over	
2006	15 - 19	28.1	3.7	0.5*	0.1*	0.0*	0.0*	32.4
	20 - 24	65.4	25.3	4.9	0.8	0.2*	0.0*	96.6
	25 - 29	50.2	39.2	11.7	2.4	0.6	0.2*	104.3
	30 - 34	21.9	24.2	12.7	3.3	0.9	0.5*	63.5
	35 - 39	8.1	8.5	7.4	2.6	1.1	1.0	28.7
	40 - 44	2.7	1.4	1.5	1.1	0.4*	0.3*	7.4
	45 - 49	0.2*	0.1*	0.1*	0.1*	0.0*	0.1*	0.6*
G.F.R	15 - 49	25.8	15.2	5.7	1.5	0.4	0.3	48.9
2007	15 - 19	29.4	4.3	0.5*	0.0*	0.0*	0.0*	34.2
	20 - 24	62.8	25.8	4.8	0.8	0.0*	0.0*	94.2
	25 - 29	46.3	39.3	11.5	2.4	0.7	0.2*	100.4
	30 - 34	20.0	25.9	11.3	3.3	1.1	0.5*	62.1
	35 - 39	8.4	7.4	6.9	2.9	1.0	0.7	27.3
	40 - 44	2.2	1.9	1.6	0.8	0.4*	0.6*	7.5
	45 - 49	0.2*	0.0*	0.1*	0.1*	0.0*	0.0*	0.4*
G.F.R	15 - 49	24.4	15.4	5.4	1.5	0.5	0.3	47.5

1/ in calculating the rates, live births occurring to mothers less than 15 years have been included in the age group (15-19) whilst those occurring to mothers aged 50 years and above in the age group (45 - 49). Births for age "Not stated" and birth order "Not stated" have been prorated.

2/ revised

* rates based on a small number of events (<30)

Table 3.11 - Age-specific fertility rates ^{1/} by age of mother - Republic of Mauritius ^{2/} and Island of Mauritius, 1998 - 2007

Age group	1998	1999	2000	2001	2002	2003	2004	2005	2006	2007
Republic of Mauritius										
15 - 19	35.6	36.4	38.9	35.7	37.2	37.1	37.8	35.1	33.9	35.4
20 - 24	120.7	124.1	121.5	116.7	115.8	109.7	109.9	105.9	97.1	94.3
25 - 29	121.6	126.5	120.4	114.9	117.2	110.6	113.0	111.4	105.8	101.7
30 - 34	73.8	79.1	75.1	70.6	73.0	71.8	70.4	71.7	64.7	64.0
35 - 39	33.2	35.1	34.2	35.1	34.9	35.8	33.2	30.9	29.9	28.7
40 - 44	7.8	8.4	8.1	8.6	8.9	8.7	8.3	9.1	7.7	8.0
45 - 49	0.6	0.4	0.6	0.6	0.5	0.6	0.7	0.5	0.6	0.4
15 - 49	58.8	61.4	60.1	57.8	58.8	56.3	55.8	53.9	50.0	48.6
Island of Mauritius										
15 - 19	35.3	35.4	37.7	34.2	36.2	35.8	35.9	33.5	32.4	34.2
20 - 24	121.6	125.2	121.6	116.5	114.9	109.7	109.0	105.4	96.6	94.2
25 - 29	121.9	126.2	119.6	114.4	116.9	109.9	111.8	110.6	104.3	100.4
30 - 34	73.1	78.2	74.4	69.8	72.2	70.7	69.0	69.9	63.5	62.1
35 - 39	32.5	34.5	33.4	34.1	33.9	34.9	31.8	30.1	28.7	27.4
40 - 44	7.5	7.9	7.5	8.3	8.7	8.2	7.9	8.8	7.4	7.5
45 - 49	0.6	0.3	0.6	0.6	0.5	0.6	0.6	0.4	0.6	0.4
15 - 49	58.4	60.8	59.4	57.1	57.7	55.5	54.6	52.9	48.9	47.5

1/ In calculating the rates, live births occurred to mothers less than 15 years have been included in the age group (15-19) whilst those occurring to mothers aged 50 years and over in the age group (45-49). Births for age "Not stated" and birth order "Not stated" have been prorated.

2/ excluding Agalega and St Brandon

Figure 5 - Age specific fertility rates - Republic of Mauritius, 1998 - 2007

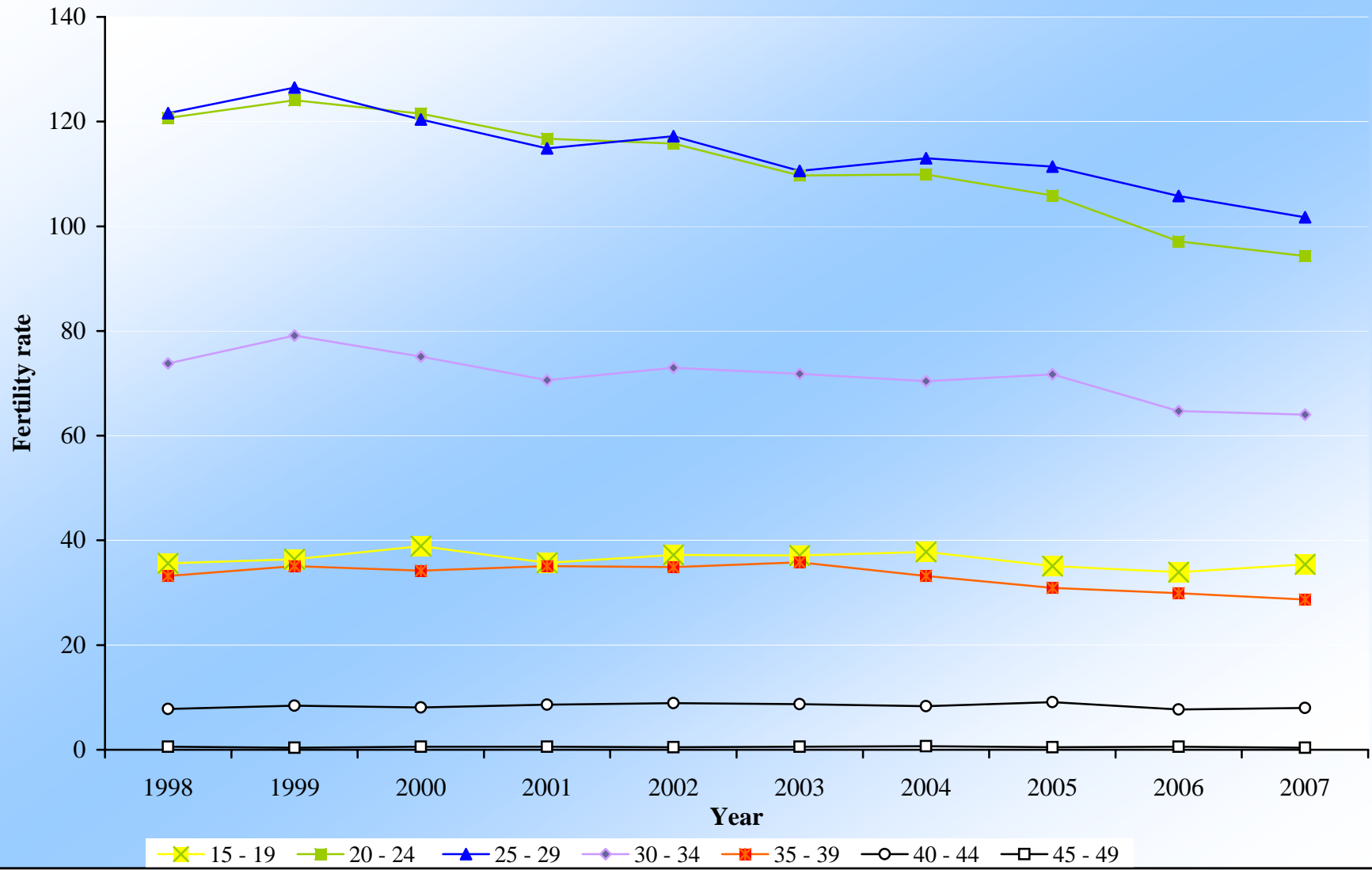


Table 3.12 - Fertility rates - Republic of Mauritius^{1/} and Island of Mauritius, 1998 - 2007

Fertility rates	1998	1999	2000	2001	2002	2003	2004	2005	2006	2007
Republic of Mauritius										
Crude birth rate	16.8	17.3	17.0	16.4	16.5	15.8	15.6	15.1	14.1	13.5
General fertility rate	58.77	61.42	60.13	57.79	58.47	56.30	55.78	53.95	49.98	48.58
Total fertility rate	1.97	2.05	1.99	1.91	1.94	1.87	1.87	1.82	1.70	1.66
Gross reproduction rate	0.96	1.00	0.97	0.94	0.96	0.91	0.92	0.90	0.83	0.81
Net reproduction rate	0.93	0.96	0.94	0.92	0.93	0.89	0.89	0.87	0.81	0.79
Island of Mauritius										
Crude birth rate	16.7	17.2	16.9	16.2	16.3	15.6	15.3	14.9	13.8	13.2
General fertility rate	58.40	60.84	59.44	57.06	57.69	55.51	54.58	52.92	48.90	47.48
Total fertility rate	1.96	2.04	1.97	1.89	1.92	1.85	1.83	1.79	1.67	1.63
Gross reproduction rate	0.96	0.99	0.96	0.93	0.95	0.90	0.90	0.88	0.81	0.80
Net reproduction rate	0.93	0.96	0.93	0.91	0.92	0.88	0.88	0.86	0.79	0.78

^{1/} excluding Agalega and St Brandon

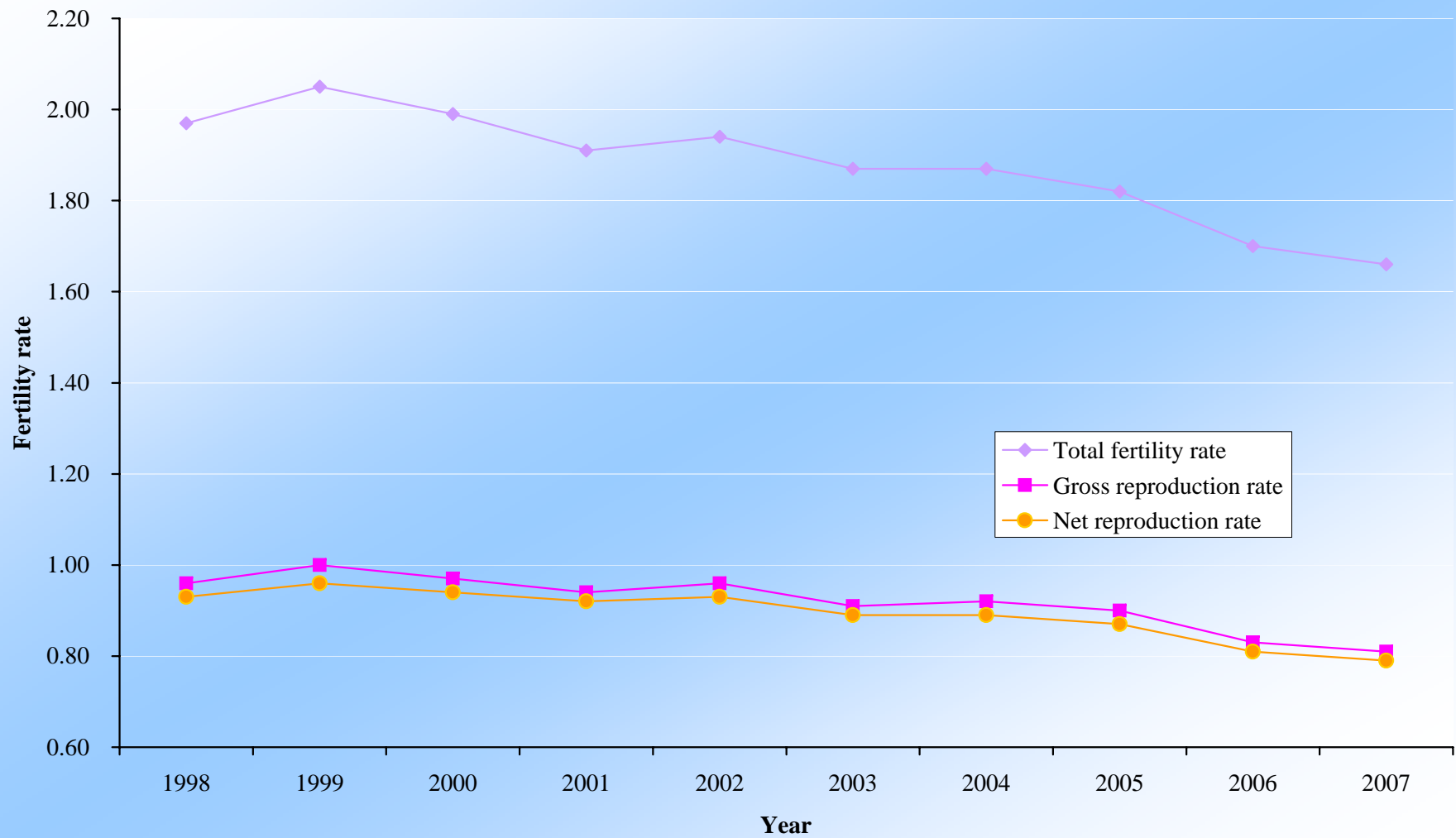
Figure 6 - Selected fertility rates - Republic of Mauritius, 1998-2007

Table 3.13 - Fertility rates ^{1/} - Island of Rodrigues, 1993 to 2007

	1993	1994	1995	1996	1997	1998	1999	2000 ^{2/}	2001	2002	2003	2004	2005	2006 ^{3/}	2007 ^{4/}
Crude birth rate	20.7	20.5	20.9	20.3	19.8	20.2	21.3	22.2	22.5	22.4	23.6	24.2	24.6	24.2	22.6
General fertility rate	83.34	82.89	81.57	77.26	73.24	74.87	77.37	82.60	83.71	83.69	88.11	89.23	91.00	87.53	87.06
Total fertility rate	2.71	2.67	2.63	2.50	2.38	2.39	2.48	2.63	2.67	2.65	2.81	2.86	2.91	2.85	2.86
Gross reproduction rate	1.33	1.33	1.34	1.28	1.21	1.19	1.23	1.29	1.28	1.27	1.36	1.40	1.43	1.42	1.48
Net reproduction rate	1.26	1.25	1.27	1.21	1.14	1.12	1.16	1.25	1.24	1.23	1.31	1.35	1.38	1.37	1.42
Female population aged (15 - 49) years	8,483	8,602	8,819	9,069	9,358	9,568	9,802	9,662	9,673	9,687	9,768	9,825	9,791	9,795	9,741
<u>Age specific fertility rate:</u>															
Age of mother (years)															
15 - 19	54.1	53.3	51.6	50.5	47.4	50.7	52.2	64.8	63.7	65.9	69.3	74.0	78.3	71.2	68.8
20 - 24	122.5	113.6	106.1	100.3	95.9	97.8	99.3	120.8	126.6	123.0	125.1	117.6	117.5	106.7	93.0
25 - 29	118.4	126.9	127.2	118.2	113.7	120.8	125.6	141.2	136.1	131.0	138.9	144.8	150.4	144.4	138.4
30 - 34	109.8	116.2	120.7	117.5	107.5	109.0	115.0	101.6	104.8	106.7	119.9	124.5	127.4	135.8	141.8
35 - 39	80.1	80.9	84.0	77.0	74.8	64.4	67.3	66.7	73.6	76.5	82.2	83.0	82.8	83.2	94.1
40 - 44	49.5	36.3	29.9	32.0	31.4	31.7	33.6	28.0	24.8	23.2	23.4	24.2	22.8	25.7	32.3
45 - 49	7.9	6.4	7.1	5.3	4.9	3.4	2.6	3.7	4.0	3.6	3.0	3.0	2.6	2.6	4.1

1/ because of the small number of events, the rates have been calculated by taking an average of events for three years in order to remove out wide fluctuations in the yearly data

2/ rates have been calculated using census figures

3/ revised

4/ for the year 2007 only

Table 3.14(a) - Live births occurred by duration of union - Republic of Mauritius^{1/}, 1998 - 2007

Duration of union(years)	1998	1999	2000	2001	2002	2003	2004	2005	2006	2007
< 1 year	3,068	1,485	1,643	1,340	1,530	1,460	1,475	1,486	1,553	1,677
1 year	3,299	3,766	3,569	3,428	3,266	3,084	3,088	2,648	2,911	2,694
2 years	1,910	2,163	2,086	2,063	2,095	1,999	1,937	1,670	1,868	1,721
3 years	1,417	1,635	1,603	1,445	1,652	1,712	1,564	1,312	1,450	1,454
4 years	1,392	1,520	1,520	1,420	1,458	1,395	1,431	1,262	1,236	1,233
5 years	1,314	1,376	1,358	1,226	1,311	1,270	1,273	1,133	1,192	1,056
6 years	1,020	1,175	1,173	1,053	1,102	1,083	1,054	976	1,023	929
7 years	893	1,029	978	874	875	900	872	791	786	830
8 years	706	787	771	720	760	767	762	638	633	632
9 years	538	680	619	589	649	610	594	492	505	492
10 - 14 years	1,376	1,702	1,672	1,690	1,859	1,804	1,721	1,390	1,404	1,226
15 - 19 years	385	433	454	467	519	526	543	420	423	400
20 years & over	96	119	123	121	138	133	100	97	95	87
Not stated	1,856	2,529	2,668	3,068	2,585	2,422	2,688	4,263	2,241	2,463
Total	19,270	20,399	20,237	19,504	19,799	19,165	19,102	18,578	17,320	16,894

1/ excluding Agalega and St. Brandon

Table 3.14(b) - Live births occurred by duration of union - Island of Mauritius, 1998 - 2007

Duration of union(years)	1998	1999	2000	2001	2002	2003	2004	2005	2006	2007
< 1 year	2,945	1,414	1,512	1,278	1,433	1,376	1,381	1,448	1,507	1,648
1 year	3,225	3,670	3,490	3,317	3,172	3,010	2,961	2,607	2,817	2,658
2 years	1,878	2,124	2,041	2,027	2,047	1,956	1,886	1,646	1,804	1,692
3 years	1,388	1,598	1,576	1,416	1,624	1,683	1,534	1,298	1,389	1,428
4 years	1,371	1,498	1,502	1,395	1,424	1,366	1,393	1,242	1,189	1,212
5 years	1,296	1,342	1,338	1,197	1,286	1,245	1,231	1,107	1,148	1,025
6 years	1,010	1,153	1,144	1,032	1,079	1,055	1,024	953	982	901
7 years	879	1,000	958	852	855	876	852	767	743	813
8 years	688	768	753	697	741	749	734	624	615	616
9 years	518	665	607	572	633	589	576	484	490	481
10 - 14 years	1,318	1,630	1,614	1,619	1,811	1,744	1,665	1,356	1,333	1,190
15 - 19 years	351	393	422	433	478	493	496	401	399	387
20 years & over	87	100	98	102	122	110	89	90	86	78
Not stated	1,636	2,256	2,375	2,768	2,271	2,103	2,331	3,684	1,965	1,917
Total	18,590	19,611	19,430	18,705	18,976	18,355	18,153	17,707	16,467	16,046

Table 3.14(c) - Live births occurred by duration of union - Island of Rodrigues, 1998 - 2007

Duration of union (years)	1998	1999	2000	2001	2002	2003	2004	2005	2006	2007
< 1 year	123	71	131	62	97	84	94	38	46	29
1 year	74	96	79	111	94	74	127	41	94	36
2 years	32	39	45	36	48	43	51	24	64	29
3 years	29	37	27	29	28	29	30	14	61	26
4 years	21	22	18	25	34	29	38	20	47	21
5 years	18	34	20	29	25	25	42	26	44	31
6 years	10	22	29	21	23	28	30	23	41	28
7 years	14	29	20	22	20	24	20	24	43	17
8 years	18	19	18	23	19	18	28	14	18	16
9 years	20	15	12	17	16	21	18	8	15	11
10 - 14 years	58	72	58	71	48	60	56	34	71	36
15 - 19 years	34	40	32	34	41	33	47	19	24	13
20 years & over	9	19	25	19	16	23	11	7	9	9
Not stated	220	273	293	300	314	319	357	579	276	546
Total	680	788	807	799	823	810	949	871	853	848

Table 3.15 (a) - Live births occurred by interval since previous live birth and live birth order - Republic of Mauritius^{1/} 2006

Year	Interval since previous live birth	Total	Live birth order								
			First ^{2/}	Second	Third	Fourth	Fifth	Sixth	Seventh	Eighth & over	Not stated
2006	< 1 year	1,604	1,552	32	12	5	1	1	-	1	-
	1 year	3,658	2,850	553	168	58	10	11	2	5	1
	2 years	2,216	1,385	580	175	47	19	8	2	-	-
	3 years	1,455	764	510	129	40	8	4	-	-	-
	4 years	1,044	463	401	125	34	13	5	3	-	-
	5 years	848	342	310	149	31	8	4	1	3	-
	6 years & over	1,975	776	662	414	94	23	5	1	-	-
	Not stated	4,520	1,012	2,276	833	253	90	31	11	11	3
	Total	17,320	9,144	5,324	2,005	562	172	69	20	20	4

1/ excluding Agalega and St Brandon

2/ interval since union started

Note: Figures for year 2007 are not available.

Table 3.15 (b) - Live births occurred by interval since previous live birth and live birth order - Island of Mauritius, 2006

Year	Interval since previous live birth	Total	Live birth order								
			First ^{1/}	Second	Third	Fourth	Fifth	Sixth	Seventh	Eighth & over	Not stated
2006	< 1 year	1,558	1,506	32	12	5	1	1	-	1	-
	1 year	3,571	2,770	550	164	58	10	11	2	5	1
	2 years	2,172	1,345	578	174	46	19	8	2	-	-
	3 years	1,415	734	503	129	37	8	4	-	-	-
	4 years	1,022	447	398	124	33	12	5	3	-	-
	5 years	827	326	306	148	31	8	4	1	3	-
	6 years & over	1,914	736	655	405	91	22	4	1	-	-
	Not stated	3,988	834	2,075	742	223	70	25	8	10	1
Total	16,467	8,698	5,097	1,898	524	150	62	17	19	2	

1/ interval since union started

Note: Figures for year 2007 are not available.

Table 3.15 (c) - Live births occurred by interval since previous live birth and live birth order - Island of Rodrigues, 2006

Year	Interval since previous live birth	Total	Live birth order									
			First ^{1/}	Second	Third	Fourth	Fifth	Sixth	Seventh	Eighth & over	Not stated	
2006	< 1 year	48	48	-	-	-	-	-	-	-	-	-
	1 year	93	85	4	4	-	-	-	-	-	-	-
	2 years	47	42	3	1	1	-	-	-	-	-	-
	3 years	41	31	7	-	3	-	-	-	-	-	-
	4 years	23	17	3	1	1	1	-	-	-	-	-
	5 years	22	17	4	1	-	-	-	-	-	-	-
	6 years & over	61	40	7	9	3	1	1	-	-	-	-
	Not stated	518	164	201	91	30	20	6	3	1	2	
Total		853	444	229	107	38	22	7	3	1	2	

^{1/} interval since union started

Note: Figures for year 2007 are not available.

Table 3.16(a) - Live births occurred by age of mother and age of father - Republic of Mauritius^{1/}, 2006 & 2007

Year	Age of mother	Age of father											Total	
		< 20	20-24	25-29	30-34	35-39	40-44	45-49	50-54	55-59	60-64	65 +		Not stated
2006	< 15	4	7	3	1	-	-	-	-	-	-	-	12	27
	15-19	162	563	503	135	26	9	2	-	-	-	-	202	1,602
	20-24	37	695	2,103	1,122	236	51	10	5	2	-	-	234	4,495
	25-29	4	182	1,638	2,270	1,095	282	49	12	5	3	1	232	5,773
	30-34	3	33	215	823	1,133	518	110	21	3	-	-	119	2,978
	35-39	1	15	59	133	378	502	150	38	6	1	-	88	1,371
	40-44	-	1	13	24	46	127	100	37	4	-	2	25	379
	45-49	-	-	-	-	2	1	13	6	1	-	1	3	27
	50 +	-	-	-	-	-	-	-	-	1	-	-	-	1
Not stated	8	57	129	96	65	44	10	3	-	-	-	255	667	
	Total	219	1,553	4,663	4,604	2,981	1,534	444	122	22	4	4	1,170	17,320
2007	< 15	12	12	4	1	1	1	-	-	-	-	-	12	43
	15-19	162	668	536	147	33	9	2	3	-	-	-	189	1,749
	20-24	38	711	1,988	1,080	192	46	15	4	7	-	-	208	4,289
	25-29	8	190	1,585	2,320	1,033	263	45	13	4	3	1	193	5,658
	30-34	2	37	240	908	1,094	530	108	21	8	2	-	136	3,086
	35-39	1	10	40	127	396	460	166	37	11	2	1	72	1,323
	40-44	-	2	9	27	51	132	119	23	6	1	1	25	396
	45-49	-	-	-	1	-	8	6	1	3	-	1	-	20
	50 +	-	-	-	-	-	-	-	-	-	-	-	-	-
Not stated	9	36	78	72	27	17	11	3	2	-	-	75	330	
	Total	232	1,666	4,480	4,683	2,827	1,466	472	105	41	8	4	910	16,894

1/ excluding Agalega and St. Brandon

Table 3.16(b) - Live births occurred by age of mother and age of father - Island of Mauritius, 2006 & 2007

Year	Age of mother	Age of father											Total	
		< 20	20-24	25-29	30-34	35-39	40-44	45-49	50-54	55-59	60-64	65 +		Not stated
2006	< 15	4	6	3	1	-	-	-	-	-	-	-	10	24
	15-19	150	530	479	126	24	9	2	-	-	-	-	158	1,478
	20-24	35	650	2,027	1,091	225	49	10	5	2	-	-	199	4,293
	25-29	4	173	1,572	2,203	1,064	273	45	12	4	3	1	194	5,548
	30-34	3	31	189	798	1,098	508	105	21	3	-	-	106	2,862
	35-39	1	13	55	128	357	477	142	37	6	-	-	78	1,294
	40-44	-	1	12	22	44	123	93	35	4	-	1	23	358
	45-49	-	-	-	-	2	1	13	5	1	-	1	3	26
	50 +	-	-	-	-	-	-	-	-	1	-	-	-	1
	Not stated	7	47	101	82	60	38	9	2	-	-	-	237	583
	Total	204	1,451	4,438	4,451	2,874	1,478	419	117	21	3	3	1,008	16,467
2007	< 15	12	11	3	1	1	1	-	-	-	-	-	5	34
	15-19	159	642	507	138	30	8	2	3	-	-	-	154	1,643
	20-24	36	678	1,934	1,060	185	46	14	4	6	-	-	168	4,131
	25-29	7	175	1,511	2,257	1,018	256	43	12	4	3	1	157	5,444
	30-34	1	36	224	867	1,049	520	102	21	8	1	-	113	2,942
	35-39	1	10	36	124	379	435	158	30	10	2	-	57	1,242
	40-44	-	2	9	26	45	124	113	22	6	1	-	19	367
	45-49	-	-	-	1	-	6	6	1	2	-	1	-	17
	50 +	-	-	-	-	-	-	-	-	-	-	-	-	-
	Not stated	7	28	45	56	19	15	9	2	1	-	-	44	226
	Total	223	1,582	4,269	4,530	2,726	1,411	447	95	37	7	2	717	16,046

Table 3.16(c) - Live births occurred by age of mother and age of father - Island of Rodrigues, 2006 & 2007

Year	Age of mother	Age of father											Total	
		< 20	20-24	25-29	30-34	35-39	40-44	45-49	50-54	55-59	60-64	65 +		Not stated
2006	< 15	-	1	-	-	-	-	-	-	-	-	-	2	3
	15-19	12	33	24	9	2	-	-	-	-	-	-	44	124
	20-24	2	45	76	31	11	2	-	-	-	-	-	35	202
	25-29	-	9	66	67	31	9	4	-	1	-	-	38	225
	30-34	-	2	26	25	35	10	5	-	-	-	-	13	116
	35-39	-	2	4	5	21	25	8	1	-	1	-	10	77
	40-44	-	-	1	2	2	4	7	2	-	-	1	2	21
	45-49	-	-	-	-	-	-	-	1	-	-	-	-	1
	50 +	-	-	-	-	-	-	-	-	-	-	-	-	-
Not stated	1	10	28	14	5	6	1	1	-	-	-	18	84	
Total	15	102	225	153	107	56	25	5	1	1	1	162	853	
2007	< 15	-	1	1	-	-	-	-	-	-	-	-	7	9
	15-19	3	26	29	9	3	1	-	-	-	-	-	35	106
	20-24	2	33	54	20	7	-	1	-	1	-	-	40	158
	25-29	1	15	74	63	15	7	2	1	-	-	-	36	214
	30-34	1	1	16	41	45	10	6	-	-	1	-	23	144
	35-39	-	-	4	3	17	25	8	7	1	-	1	15	81
	40-44	-	-	-	1	6	8	6	1	-	-	1	6	29
	45-49	-	-	-	-	-	2	-	-	1	-	-	-	3
	50 +	-	-	-	-	-	-	-	-	-	-	-	-	-
Not stated	2	8	33	16	8	2	2	1	1	-	-	31	104	
Total	9	84	211	153	101	55	25	10	4	1	2	193	848	

Table 3.17(a) - Live births occurred by age of mother - Republic of Mauritius^{1/}, 1998 - 2007

Age group (years)	1998	1999	2000	2001	2002	2003	2004	2005	2006	2007
Under 15	22	34	36	31	33	28	38	26	27	43
15 - 19	1,957	1,922	1,924	1,682	1,697	1,692	1,731	1,534	1,602	1,749
20 - 24	6,251	6,643	6,764	6,607	6,583	6,077	5,834	4,902	4,495	4,289
25 - 29	5,355	5,759	5,654	5,493	5,773	5,776	6,072	5,706	5,773	5,658
30 - 34	3,720	3,873	3,714	3,368	3,449	3,281	3,267	3,094	2,978	3,086
35 - 39	1,572	1,720	1,715	1,810	1,781	1,837	1,650	1,403	1,371	1,323
40 - 44	322	360	360	389	413	411	404	418	379	396
45 - 49	20	15	23	24	20	26	25	18	27	20
50 & over	1	-	1	1	1	-	4	-	1	-
Not stated	50	73	46	99	49	37	77	1,477	667	330
Total	19,270	20,399	20,237	19,504	19,799	19,165	19,102	18,578	17,320	16,894

1/ excluding Agalega and St Brandon

Table 3.17(b) - Live births occurred by age of mother - Island of Mauritius, 1998 - 2007

Age group (years)	1998	1999	2000	2001	2002	2003	2004	2005	2006	2007
Under 15	21	32	33	25	27	25	30	26	24	34
15 - 19	1,852	1,778	1,780	1,543	1,583	1,562	1,581	1,405	1,478	1,643
20 - 24	6,041	6,439	6,557	6,380	6,304	5,844	5,548	4,667	4,293	4,131
25 - 29	5,198	5,557	5,453	5,316	5,596	5,582	5,845	5,512	5,548	5,444
30 - 34	3,606	3,747	3,588	3,247	3,324	3,155	3,123	2,949	2,862	2,942
35 - 39	1,510	1,656	1,637	1,721	1,694	1,754	1,550	1,337	1,294	1,242
40 - 44	302	332	325	366	392	382	380	396	358	367
45 - 49	19	13	20	21	17	24	22	15	26	17
50 & over	1	-	1	1	1	-	4	-	1	-
Not stated	40	57	36	85	38	27	70	1,400	583	226
Total	18,590	19,611	19,430	18,705	18,976	18,355	18,153	17,707	16,467	16,046