

Section VI
Water Statistics

Table 6.1 - Water balance for *Island of Mauritius* , 2003 - 2007

	Unit	2003	2004	2005	2006	2007
Rainfall	Mm ³	4,006	4,233	4,423	3,571	3,644
Surface Runoff	Mm ³	2,403	2,540	2,654	2,143	2,186
Evapotranspiration	Mm ³	1,202	1,270	1,327	1,071	1,093
Net Recharge to Groundwater	Mm ³	401	423	442	357	364

Source : Water Resources Unit, Ministry of Public Utilities

Table 6.2 - Main water indicators^{1/}, 2003 - 2007

Details	Unit	2003	2004	2005	2006	2007
Mid-year population	thousand	1,186	1,197	1,206	1,216	1,223
Mean annual rainfall						
<i>Island of Mauritius</i>	Millimetres	2,148	2,270	2,372	1,914	1,954
<i>Island of Rodrigues</i>	Millimetres	1,320	1,134	1,275	1,189	945
Potable water produced	Mm ³	184	185	195	187	205
Potable water consumed	Mm ³	90	90	94	94	95
Potable water produced per capita per day	litres	425	423	442	421	460
Potable water consumed per capita per day	litres	207	206	213	212	213

1/ All data refer to Island of Mauritius, except for rainfall where figures are available for Rodrigues as well.

Table 6.3 - Water utilisation in *Island of Mauritius* by source of water, 2006 & 2007

Utilisation	2006				2007			
	Source of water			Total	Source of water			Total
	Surface water		Ground water		Surface water		Ground water	
	River-run offtakes	Reservoirs		River-run offtakes	Reservoirs			
Domestic, Industrial, Commercial and Hotels	35	65	116	216	35	67	99	201
Industrial from private boreholes	-	-	13	13	-	-	6	6
Agricultural irrigation	347	81	25	453	338	78	7	423
Hydropower	113	123	-	236	137	117	-	254
Total	495	269	154	918	510	262	112	884

Source : Water Resources Unit, Ministry of Public Utilities

Table 6.4 - Fresh water abstractions in *Island of Mauritius* for agricultural, domestic and industrial use by source, 1998 - 2007

Source	1998	1999	2000	2001	2002	2003	2004	2005	2006	2007
Surface water	508	405	536	515	524	552	512	541	528	518
<i>Reservoirs</i>	119	61	147	125	128	169	167	154	146	145
<i>Rivers and streams</i>	389	344	389	390	396	383	345	387	382	373
Ground water	131	111	145	145	148	148	150	150	154	112
Total	639	516	681	660	672	700	662	691	682	630

Note: period does not refer to calendar year but to Hydrologic Year which is from November year (n-1) to October year (n)

Source : Water Resources Unit, Ministry of Public Utilities

Table 6.5 - Gross storage capacity in *Island of Mauritius* by location and use of reservoirs

Reservoir	La Nicoliere	Diamamouve	Eau Bleue	Mare aux Vacoas	Mare Longue	Midlands Dam	Piton du Milieu	Dagotiere	Valetta	La Ferme	Tamarind Falls	Total Storage Capacity
Capacity (Mm ³)	5.3	4.3	4.1	25.9	6.3	25.5	3.0	0.6	3.0	11.5	2.3	90.7
District/ location	Pamplemousses	Grand Port		Pl. Wilhems			Moka		Black River			
Use	Domestic, Irrigation & Industrial	Hydro-power		Domestic	Hydro-power & Irrigation	Domestic, Irrigation & Industrial	Domestic	Sugar mill & Irrigation	Irrigation	Hydro-power & Irrigation		

Source : Water Resources Unit, Ministry of Public Utilities

Table 6.6 - Mean rainfall, 2003 - 2007 (Island of Mauritius)

		<i>Millimetres</i>																				
Period	Long Term Mean (1971-2000)	2003		2004		2005		2006		2007		Long Term Mean (1971-2000)	2003		2004		2005		2006		2007	
		Mean	% of Long Term Mean	Mean	% of Long Term Mean	Mean	% of Long Term Mean	Mean	% of Long Term Mean	Mean	% of Long Term Mean		Mean	% of Long Term Mean	Mean	% of Long Term Mean	Mean	% of Long Term Mean	Mean	% of Long Term Mean	Mean	% of Long Term Mean
		North											South									
Year	1,341	1325	99	1495	111	1494	111	1464	109	1095	82	2,557	2533	99	2794	109	2927	114	2200	86	2375	93
Jan	186	103	55	331	178	80	43	285	154	194	105	290	181	62	490	169	162	56	440	151	390	134
Feb	245	237	97	134	55	270	110	292	119	306	125	366	424	116	417	114	369	101	354	97	598	163
Mar	161	139	86	189	117	564	350	395	245	95	59	325	212	65	271	83	865	266	451	139	208	64
Apr	165	316	192	187	113	47	28	65	39	69	42	280	434	155	396	141	205	73	111	40	177	63
May	107	139	130	133	124	55	51	44	41	89	83	212	258	122	290	137	152	72	53	25	200	94
Jun	72	60	83	70	97	69	96	107	148	111	154	157	187	119	196	125	193	123	123	78	169	107
Jul	73	77	105	75	103	103	141	89	122	63	86	180	319	177	111	62	249	138	233	130	173	96
Aug	68	70	103	28	41	67	99	48	71	33	48	180	111	62	53	29	124	69	105	58	80	44
Sep	44	78	177	135	307	126	286	44	100	27	61	112	214	191	104	93	342	305	78	70	116	104
Oct	41	21	51	14	34	38	93	19	45	57	140	96	47	49	39	41	92	96	75	78	124	129
Nov	47	56	119	89	189	30	64	52	111	35	74	110	100	91	213	194	63	57	111	101	49	45
Dec	132	29	22	110	83	45	34	24	18	16	12	249	46	18	214	86	111	45	66	27	91	37
		East											West									
Year	2,065	2403	116	2474	120	2435	118	2646	127	2436	117	918	979	107	900	98	1079	118	740	84	1028	116
Jan	260	136	52	464	178	167	64	455	175	449	172	167	93	56	270	162	82	49	223	133	186	111
Feb	336	352	105	355	106	448	133	482	143	574	171	219	192	88	189	86	207	94	167	76	528	241
Mar	243	265	109	231	95	657	270	658	271	203	84	112	83	74	118	105	515	459	221	197	84	75
Apr	245	579	236	364	149	141	58	129	53	149	61	97	319	329	72	74	39	40	5	5	1	1
May	180	229	127	226	126	144	80	73	41	224	124	56	83	148	30	54	40	72	27	49	4	8
Jun	123	142	115	147	120	195	158	127	103	193	157	33	36	109	35	106	16	49	6	19	84	253
Jul	116	216	186	107	92	191	165	242	209	162	139	25	47	188	17	68	24	96	24	96	25	100
Aug	114	117	103	51	45	95	83	124	108	84	74	26	29	112	8	31	28	108	3	12	17	67
Sep	79	173	219	152	192	220	278	117	148	95	121	20	23	115	14	70	83	415	9	46	6	32
Oct	74	34	46	42	57	58	78	83	111	148	200	18	6	33	7	39	14	77	0	0	40	219
Nov	86	97	113	154	179	44	51	98	114	69	80	31	27	87	33	106	13	41	41	132	14	47
Dec	209	63	30	181	87	75	36	58	28	86	41	114	41	36	107	94	18	16	14	12	39	34

Source: Mauritius Meteorological Services

Table 6.6-Mean rainfall, 2003 - 2007 (Island of Mauritius) (cont'd)

		Millimetres																				
Period	Long Term Mean (1971-2000)	2003		2004		2005		2006		2007		Long Term Mean (1971-2000)	2003		2004		2005		2006		2007	
		Mean	% of Long Term Mean	Mean	% of Long Term Mean	Mean	% of Long Term Mean	Mean	% of Long Term Mean	Mean	% of Long Term Mean		Mean	% of Long Term Mean	Mean	% of Long Term Mean	Mean	% of Long Term Mean	Mean	% of Long Term Mean	Mean	% of Long Term Mean
		Center											Whole Island									
Year	2,790	3,018	108	3,280	118	3,319	119	2,433	87	2,744	98	2,006	2,148	107	2,270	113	2,372	118	1,914	95	1,954	97
Jan	354	197	56	617	174	180	51	443	125	503	142	261	142	54	443	170	148	57	372	142	347	133
Feb	464	490	106	438	94	557	120	357	77	844	182	336	358	107	316	94	407	121	331	99	572	170
Mar	337	269	80	402	119	961	285	563	167	228	68	242	204	84	252	104	727	300	459	189	165	68
Apr	293	521	178	386	132	153	52	100	34	181	62	221	454	205	297	134	117	53	83	37	119	53
May	210	354	169	336	160	190	91	66	32	170	81	159	218	137	203	128	126	79	53	33	139	88
Jun	163	195	120	201	123	185	114	124	76	151	93	115	128	111	131	114	139	121	100	87	142	124
Jul	181	315	174	130	72	257	142	279	154	180	99	120	208	173	93	78	174	145	177	147	123	102
Aug	192	163	85	76	40	175	91	113	59	94	49	122	105	86	46	38	106	87	80	66	63	51
Sep	126	245	194	143	113	348	276	109	86	102	81	81	150	185	120	148	233	288	72	89	71	88
Oct	102	65	64	59	58	102	100	99	97	151	148	70	36	51	36	51	64	91	56	80	105	150
Nov	105	119	113	202	192	84	80	117	111	56	53	80	86	108	139	174	48	60	85	106	45	56
Dec	263	85	32	290	110	127	48	63	24	84	32	199	59	30	194	97	83	42	46	23	63	32

Source: Mauritius Meteorological Services

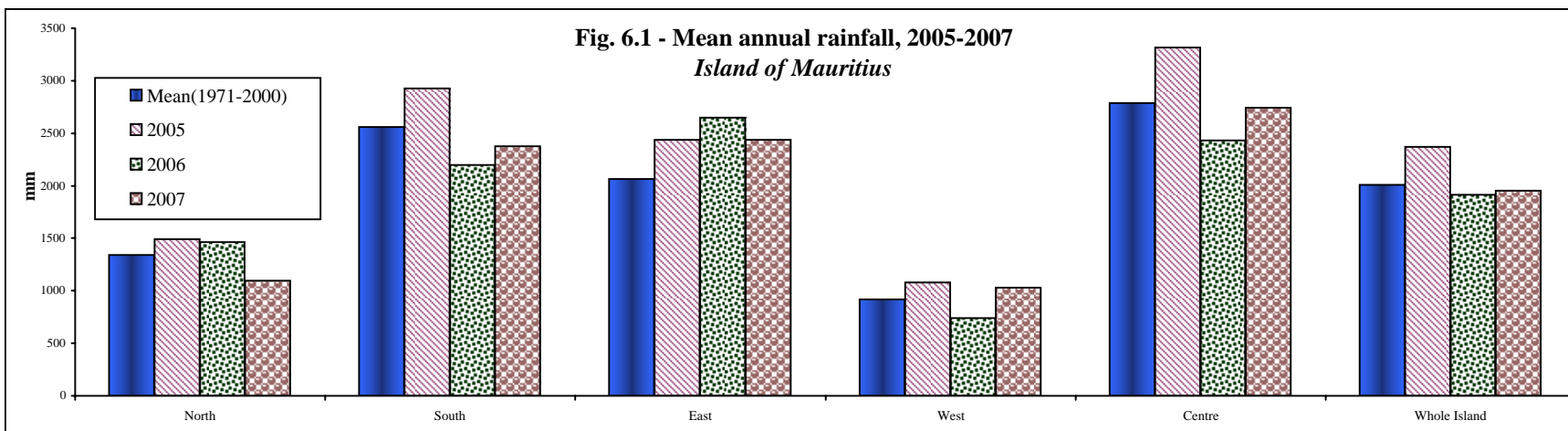


Table 6.7- Mean rainfall 2001-2007, *Island of Rodrigues*

Millimetres

Period	Long Term Mean (1971-2000)	2001		2002		2003		2004		2005		2006		2007		Long Term Mean (1971-2000)	2001		2002		2003		2004		2005		2006		2007	
		Mean	% of Long Term Mean	Mean	% of Long Term Mean	Mean	% of Long Term Mean	Mean	% of Long Term Mean	Mean	% of Long Term Mean	Mean	% of Long Term Mean	Mean	% of Long Term Mean		Mean	% of Long Term Mean	Mean	% of Long Term Mean	Mean	% of Long Term Mean	Mean	% of Long Term Mean	Mean	% of Long Term Mean	Mean	% of Long Term Mean	Mean	% of Long Term Mean
		Oyster Bay															Plaine Corail													
Year	999	911	96	1068	113	1021	108	1209	128	1230	130	999	76	1027	78	946	717	76	864	91	1105	117	1088	115	1126	119	1064	113	920	70
Jan	39	65	37	98	57	112	70	167	173	68	39	39	23	111	64	122	45	37	132	108	116	95	226	185	66	54	48	40	158	131
Feb	154	41	19	50	22	83	46	72	220	125	57	154	70	207	94	168	60	36	40	24	116	69	57	34	172	102	160	95	256	152
Mar	201	43	29	211	141	187	131	107	150	142	95	201	134	81	54	125	17	14	214	171	145	116	116	93	212	170	418	334	78	62
Apr	92	88	67	121	92	217	159	288	132	222	168	92	69	60	45	100	111	111	103	103	301	301	251	251	119	119	44	44	62	62
May	63	123	145	35	41	79	129	237	85	115	136	63	74	53	63	72	67	93	50	69	90	124	191	265	129	179	40	55	39	57
Jun	85	41	42	59	62	93	158	72	96	103	107	85	89	38	39	62	60	97	60	97	106	170	48	77	125	202	61	99	17	27
Jul	185	127	129	91	92	31	52	45	99	131	133	185	188	99	100	53	66	125	37	70	41	77	37	70	94	177	137	256	67	126
Aug	73	44	55	183	230	35	70	76	79	76	96	73	92	48	60	46	40	87	57	124	25	55	33	72	33	72	74	162	24	52
Sep	48	211	369	74	130	89	290	52	57	111	195	48	84	61	107	32	167	522	45	141	76	236	43	134	87	272	20	62	36	112
Oct	52	64	122	68	128	47	133	27	53	30	58	52	99	49	93	32	64	200	58	181	32	98	25	78	13	41	43	135	37	117
Nov	5	53	63	28	33	29	50	32	84	65	77	5	6	8	10	64	18	28	14	22	20	31	23	36	43	67	11	17	9	14
Dec	2	11	13	50	59	19	35	34	84	42	50	2	2	212	253	70	2	3	54	77	14	20	38	54	33	47	8	11	137	195
		Port Sud Est															Pte Canon													
Year	2169	1234	112	1179	107	1306	118	1620	147	1381	125	1381	125	1231	120	1105	883	80	997	90	1320	119	1134	103	1275	115	1189	108	945	92
Jan	155	243	156	92	59	176	113	103	66	39	25	39	25	147	94	150	61	41	127	85	91	61	208	139	68	45	43	29	73	49
Feb	206	64	31	95	46	77	37	366	178	221	108	221	108	561	273	185	72	39	66	36	87	47	55	30	179	97	207	112	315	170
Mar	128	320	250	201	157	123	96	340	266	546	427	546	427	103	80	131	35	27	189	144	365	279	110	84	143	109	377	287	54	41
Apr	110	49	44	341	310	458	416	161	146	48	44	48	44	62	56	117	101	86	62	53	336	287	264	226	230	197	91	78	47	40
May	59	53	89	89	151	188	319	124	210	55	94	55	94	47	80	78	102	131	81	104	115	147	164	210	105	135	67	85	35	44
Jun	67	118	177	128	192	27	40	126	189	103	155	103	155	19	29	78	103	132	69	88	61	78	66	85	135	173	78	101	30	39
Jul	57	47	82	31	55	25	44	110	194	202	356	202	356	89	158	81	111	137	76	94	65	80	41	51	130	160	159	196	75	93
Aug	56	97	171	21	36	44	79	34	61	55	97	55	97	47	83	59	30	51	154	261	35	59	83	141	76	129	55	93	43	72
Sep	34	24	69	84	244	68	198	163	476	21	62	21	62	37	109	44	131	298	46	105	69	157	56	127	96	218	29	67	46	104
Oct	35	144	408	37	104	28	80	11	31	73	207	73	207	20	56	41	65	159	63	154	24	59	19	46	23	56	48	118	38	94
Nov	50	14	28	50	100	20	40	21	42	11	22	11	22	1	2	70	61	87	14	20	56	80	31	44	43	61	12	17	7	10
Dec	65	61	94	10	16	72	110	61	94	7	11	7	11	98	151	71	11	15	50	70	16	23	37	52	47	66	23	32	182	256

Source: Mauritius Meteorological Services

Table 6.7 - Mean rainfall 2001-2007, Island of Rodrigues (cont'd)

Millimetres

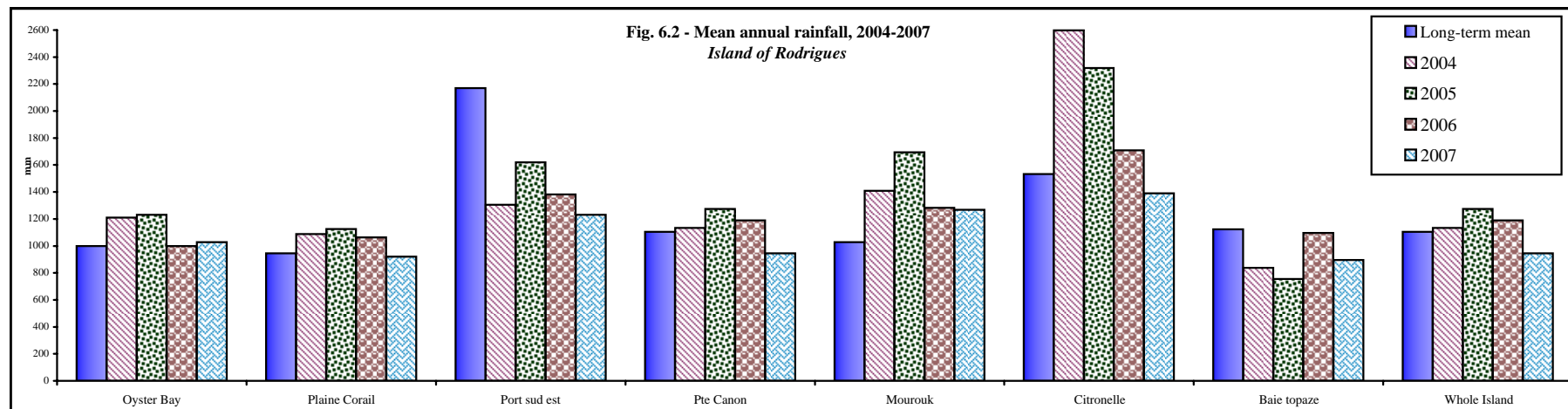
Period	Long Term Mean	2001		2002		2003		2004		2005		2006		2007		Long Term Mean	2001		2002		2003		2004		2005		2006		2007	
		Mean	% of Long Term Mean	Mean	% of Long Term Mean	Mean	% of Long Term Mean	Mean	% of Long Term Mean	Mean	% of Long Term Mean	Mean	% of Long Term Mean	Mean	% of Long Term Mean		Mean	% of Long Term Mean	Mean	% of Long Term Mean	Mean	% of Long Term Mean	Mean	% of Long Term Mean	Mean	% of Long Term Mean	Mean	% of Long Term Mean	Mean	% of Long Term Mean
	(1981-2000)	Mourouk														(1981-2000)	St Gabrielle													
Year	1,028	965	94	1035	101	1021	99	1409	137	1694	165	1283	90	1267	123	1,432	1,874	131	1415	99	1661	116	1409	98	1792	125	1432	100		
Jan	160	80	50	209	131	112	70	182	131	128	80	43	27	165	103	198	38	19	127	64	204	103	182	92	134	68	46	23		
Feb	181	73	40	30	17	83	46	93	43	346	191	239	132	504	278	234	220	94	121	52	141	60	93	40	184	78	300	128		
Mar	142	43	30	342	240	187	131	157	87	319	224	452	318	104	73	176	118	67	254	145	240	136	157	90	399	227	403	230		
Apr	137	178	130	n/a	-	217	159	400	220	212	155	35	25	49	36	166	302	182	128	77	376	227	400	241	223	134	116	70		
May	61	51	83	69	113	79	129	237	335	135	221	48	78	46	75	85	286	336	93	110	166	195	237	279	152	178	90	106		
Jun	59	56	95	27	46	93	158	48	39	125	211	104	177	29	50	101	89	87	115	114	156	154	48	48	235	232	103	102		Station closed down in 2007
Jul	60	96	160	31	52	31	52	36	40	145	241	209	347	73	122	101	219	217	65	65	65	65	36	36	156	154	158	156		
Aug	50	34	68	69	137	35	70	64	96	40	79	42	83	46	91	72	56	77	273	379	52	72	64	89	60	83	73	102		
Sep	31	195	639	32	105	89	290	79	283	148	485	25	83	73	240	67	319	476	70	104	111	165	79	118	110	164	61	91		
Oct	35	77	217	152	429	47	133	34	84	18	51	57	162	18	51	67	138	206	97	145	67	100	34	51	23	34	58	86		
Nov	59	55	93	19	32	29	50	38	41	30	51	25	41	2	4	98	89	91	35	35	57	58	38	38	86	87	15	15		
Dec	53	27	51	55	104	19	55	41	119	48	90	4	8	158	298	67	0	0	37	55	26	38	41	60	30	45	9	14		
	(1982-2000)	Citronelle														(1993-2000)	Baie Topaze													
Year	1,532	1615	105	2036	133	2588	169	2597	170	2319	151	1708	152	1389	91	1,123	754	67	1072	95	1243	111	838	75	754	67	1097	98	896	58
Jan	183	183	100	258	141	128	70	325	178	90	49	16	9	113	62	173	59	34	158	91	133	77	177	102	57	33	44	26	124	72
Feb	236	156	66	69	29	258	109	86	37	329	139	343	145	399	169	192	93	48	58	30	113	59	55	28	129	67	112	59	269	140
Mar	171	64	37	256	150	333	195	292	171	176	103	450	264	110	64	153	26	17	261	171	337	220	98	64	160	105	463	302	62	40
Apr	170	206	121	151	89	773	454	577	339	354	208	169	100	82	48	114	108	95	116	102	284	250	233	205	49	43	46	41	69	60
May	99	210	212	180	182	402	406	484	489	243	245	29	30	58	59	61	14	23	64	105	87	143	127	207	68	112	25	41	29	47
Jun	104	97	93	214	205	117	112	132	126	291	279	144	138	61	58	79	95	119	56	71	64	80	27	34	51	64	71	89	18	22
Jul	118	210	178	161	136	179	151	76	64	238	202	214	181	111	94	61	88	144	68	112	49	81	20	33	41	67	166	272	70	115
Aug	103	16	16	330	321	83	81	193	188	126	123	98	95	84	82	66	31	48	117	178	22	33	33	50	61	93	79	121	27	41
Sep	75	295	392	66	88	186	247	113	150	277	367	91	121	70	94	39	148	379	22	55	79	203	15	38	25	64	22	56	44	112
Oct	76	101	134	209	277	63	83	56	74	49	64	127	169	75	99	49	74	151	67	137	41	83	14	29	25	51	48	98	27	56
Nov	115	69	60	30	26	46	40	109	95	143	125	9	8	16	14	81	18	22	32	40	24	29	12	14	88	109	3	4	2	3
Dec	82	8	10	112	136	20	24	154	187	3	4	18	22	210	255	55	0	0	53	97	10	18	27	48	0	0	18	32	155	283

Source: Mauritius Meteorological Services

Table 6.7 - Mean rainfall 2003-2007, Island of Rodrigues (cont'd)

Period	Long Term Mean (1981-2000)	2007		Long Term Mean (1961-1990)	2003		2004		2005		2006		2007	
		Mean	% of Long Term Mean		Mean	% of Long Term Mean	Mean	% of Long Term Mean	Mean	% of Long Term Mean	Mean	% of Long Term Mean	Mean	% of Long Term Mean
		Marechal ^{1/}			Whole Island									
Year	1,320	1607	122	1,105	1320	119	1134	103	1275	115	1189	108	945	92
Jan	156	215	138	150	91	61	208	139	68	45	43	29	73	49
Feb	213	442	208	185	87	47	55	30	179	97	207	112	315	170
Mar	152	77	51	131	365	278	110	84	143	109	377	287	54	41
Apr	152	197	129	117	336	287	264	225	230	197	91	78	47	40
May	99	62	63	78	115	146	164	209	105	134	67	85	35	44
Jun	96	25	26	78	61	78	66	86	135	174	78	101	30	39
Jul	92	120	130	81	65	80	41	51	130	161	159	196	75	93
Aug	80	36	44	59	35	59	83	139	76	128	55	93	43	72
Sep	53	99	185	44	69	157	56	127	96	219	29	67	46	104
Oct	55	81	148	41	24	60	19	47	23	56	48	118	38	94
Nov	89	4	4	70	56	79	31	45	43	61	12	17	7	10
Dec	83	249	299	71	16	22	37	52	47	66	23	32	182	256

1/ Marechal became operational anew in 2007



Note: 'Long-term mean' refers to:
 1971-2000 for Oyster Bay, Plaine Corail, Port Sud Est and Pte Canon;
 1981-2000 for Mourouk and St Gabriel;
 1982-2000 for Citronelle and Baie Topaze;
 1993-2000 for Baie Topaze.

Table 6.8- Percentage of water level by month and reservoir, 2003 - 2007 (Island of Mauritius)

Period	Average for 1990-1999 (%)	2003			2004			2005			2006			2007		
		Mean (%)	Min. (%)	Max. (%)	Mean (%)	Min. (%)	Max. (%)	Mean (%)	Min. (%)	Max. (%)	Mean (%)	Min. (%)	Max. (%)	Mean (%)	Min. (%)	Max. (%)
Mare aux Vacoas (Capacity 25.89 Mm³)																
Jan	60	69	66	73	74	65	79	53	50	56	72	69	77	44	42	54
Feb	65	77	68	85	84	79	90	56	50	61	74	69	79	64	55	98
Mar	80	84	81	86	96	92	98	78	60	100	92	79	96	99	98	100
Apr	83	88	83	91	98	96	99	97	95	98	92	88	96	95	93	98
May	83	97	92	99	98	97	99	93	92	95	82	76	88	92	90	95
Jun	81	94	92	95	96	95	97	93	92	94	71	68	76	91	88	93
Jul	79	97	94	98	96	94	98	96	91	98	71	67	77	87	86	88
Aug	80	97	95	98	90	85	94	95	93	96	76	74	78	82	77	86
Sep	78	97	95	98	80	76	85	95	93	98	71	68	74	72	67	77
Oct	72	93	88	97	70	64	76	96	92	99	65	61	68	64	61	67
Nov	63	83	79	88	62	59	64	86	80	91	59	57	61	55	50	61
Dec	58	72	65	78	58	55	60	75	69	80	52	46	58	45	40	49
La Nicoliere (Capacity 5.26 Mm³)																
Jan	63	40	36	44	82	54	100	82	66	93	64	44	77	63	47	87
Feb	75	68	45	93	100	100	100	88	61	100	92	80	100	99	90	100
Mar	91	93	84	100	100	100	100	100	95	100	100	100	100	100	100	100
Apr	92	100	97	100	100	100	100	92	81	100	99	87	100	84	75	100
May	95	98	89	100	100	100	100	76	68	83	66	55	87	74	57	88
Jun	94	67	38	88	100	98	100	71	58	85	71	57	82	85	62	98
Jul	93	55	28	96	100	99	100	82	75	88	58	40	79	71	61	84
Aug	94	79	52	100	84	62	99	71	65	77	63	45	76	69	59	73
Sep	89	48	29	82	71	56	96	82	66	94	31	23	46	67	63	72
Oct	69	69	50	92	74	63	95	71	65	77	48	27	67	71	63	82
Nov	46	75	63	91	79	65	92	75	52	81	68	63	72	58	46	73
Dec	39	69	49	88	71	61	81	43	37	53	55	47	63	45	42	54
Piton du Milieu (Capacity 2.99 Mm³)																
Jan	64	69	65	74	77	46	100	74	70	75	75	56	99	69	63	97
Feb	72	90	74	100	100	99	100	85	69	100	99	95	100	100	99	100
Mar	88	99	97	100	100	99	100	100	99	100	100	99	100	99	98	100
Apr	89	100	98	100	100	99	100	98	93	100	96	92	99	97	95	99
May	91	100	98	100	99	98	100	89	85	93	81	72	91	98	94	99
Jun	86	97	94	99	94	91	98	85	83	86	64	57	71	98	95	100
Jul	83	99	98	100	97	92	99	95	85	100	61	54	76	91	89	95
Aug	83	99	97	100	83	73	91	94	89	98	83	76	86	87	82	91
Sep	81	97	95	100	67	65	73	96	89	100	88	86	89	75	71	82
Oct	73	89	79	97	63	58	66	96	88	99	83	80	87	69	68	71
Nov	60	70	64	79	57	55	59	79	71	88	79	74	82	66	62	69
Dec	57	54	45	64	63	57	73	64	56	70	74	67	80	54	48	62

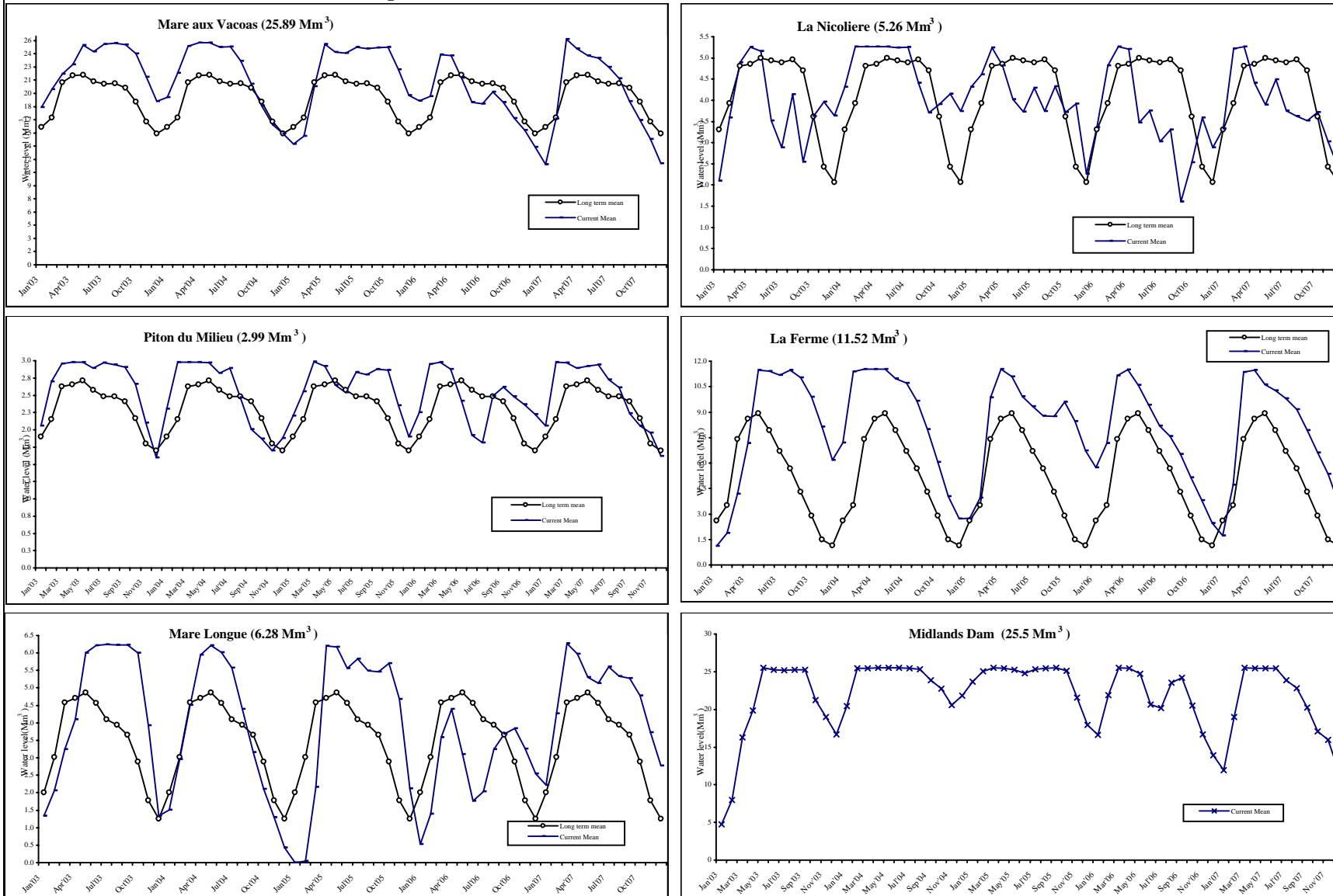
Source : Water Resources Unit, Ministry of Public Utilities

Table 6.8 - Percentage of water level by month and reservoir, 2003 - 2007 (Island of Mauritius) (cont'd)

Period	Average for 1990-1999 (%)	2003			2004			2005			2006			2007		
		Mean (%)	Min. (%)	Max. (%)	Mean (%)	Min. (%)	Max. (%)	Mean (%)	Min. (%)	Max. (%)	Mean (%)	Min. (%)	Max. (%)	Mean (%)	Min. (%)	Max. (%)
La Ferme (Capacity 11.52 Mm³)																
Jan	23	10	9	11	63	45	86	24	22	25	50	43	56	15	13	22
Feb	30	16	8	29	99	88	100	34	21	51	62	55	80	41	24	82
Mar	64	36	30	43	100	100	100	86	52	100	97	80	100	99	85	100
Apr	75	62	43	92	100	100	100	100	100	100	100	99	100	100	98	100
May	77	100	94	100	100	100	100	96	91	100	92	86	98	92	88	97
Jun	69	99	96	100	95	91	100	86	82	90	82	76	86	89	86	92
Jul	58	97	94	100	93	88	96	81	80	82	71	69	76	85	83	88
Aug	49	99	98	100	84	79	88	76	72	80	66	61	71	79	75	83
Sep	37	96	93	98	69	61	79	76	72	82	57	52	61	69	64	75
Oct	25	86	80	93	53	43	61	83	81	85	45	39	52	58	53	63
Nov	13	71	63	79	35	29	42	74	66	81	33	29	39	46	39	53
Dec	10	54	44	62	24	22	28	58	50	66	21	15	29	32	25	39
Mare Longue (Capacity 6.28 Mm³)																
Jan	32	21	19	22	24	4	36	0	0	0	9	0	17	35	32	51
Feb	48	33	16	47	47	37	57	1	0	4	22	14	33	68	52	100
Mar	73	52	48	57	72	58	84	34	4	94	57	32	71	100	99	100
Apr	75	65	57	74	95	84	99	99	94	100	70	62	74	95	91	99
May	77	96	76	100	99	98	100	98	94	100	49	37	62	85	81	91
Jun	73	99	98	100	96	93	98	89	86	94	28	24	37	82	78	85
Jul	65	100	98	100	89	79	95	93	88	95	33	25	45	89	85	93
Aug	63	99	98	100	70	60	79	87	83	92	52	47	56	85	83	90
Sep	58	99	98	100	50	43	60	87	83	93	59	56	60	84	83	85
Oct	46	96	85	99	33	26	42	91	86	93	61	57	64	76	66	83
Nov	28	63	43	84	21	17	25	75	59	86	52	47	56	59	52	66
Dec	20	21	4	42	7	0	17	34	12	57	41	32	50	44	41	51
All reservoirs, excluding Midlands Dam (Capacity 51.94 Mm³)																
Jan	49	47	45	49	66	51	78	44	41	47	59	52	65	40	37	52
Feb	56	58	47	70	86	79	90	50	40	58	68	62	77	63	16	95
Mar	77	71	69	74	95	91	97	76	38	98	90	77	95	99	95	100
Apr	82	81	74	91	98	97	99	97	95	99	92	88	94	95	93	99
May	83	97	92	99	99	98	99	93	91	95	79	72	87	90	86	94
Jun	79	93	89	96	96	94	98	88	87	91	68	65	71	89	86	91
Jul	75	93	88	98	95	91	97	91	87	92	64	60	71	85	84	87
Aug	73	96	92	99	85	78	91	87	84	90	70	67	73	81	77	83
Sep	68	92	90	95	72	70	77	89	84	93	63	60	67	72	68	77
Oct	58	89	86	94	62	55	70	90	87	93	59	57	60	65	62	68
Nov	46	76	70	85	52	50	54	80	71	86	55	52	57	55	48	61
Dec	41	60	50	70	46	43	50	62	55	70	45	39	52	42	39	48
Midlands Dam (Capacity 25.5 Mm³)																
Jan	Impounding of reservoir started on 13 September 2002	24	19	31	80	66	96	93	91	94	65	59	76	47	43	63
Feb		49	31	63	100	96	100	98	94	100	86	76	100	75	64	100
Mar		70	64	78	100	99	100	100	100	100	100	100	100	100	99	100
Apr		90	78	100	100	99	100	100	99	100	100	100	100	100	99	100
May		100	100	100	100	100	100	99	96	100	97	91	100	100	99	100
Jun		100	99	100	100	99	100	97	94	99	81	73	90	100	99	100
Jul		99	99	100	100	99	100	99	96	100	79	74	88	94	91	99
Aug		100	99	100	99	99	99	100	99	100	92	89	94	90	85	94
Sep		100	99	100	94	89	99	100	100	100	95	90	97	79	73	85
Oct		94	83	99	89	85	91	98	93	100	80	71	89	67	64	73
Nov		81	74	83	81	79	84	85	80	92	66	63	71	63	56	66
Dec		69	65	74	86	81	90	70	59	80	55	46	63	46	36	56

Source : Water Resources Unit, Ministry of Public Utilities

Fig. 6.3 - Water level in each reservoir for 2003 - 2007 (Island of Mauritius)



Note: Impounding of Midlands Dam started in September 2002

Table 6.9 - Average monthly potable water production from treatment plants and boreholes to distribution systems, 2003- 2007 (Island of Mauritius)

Month	Mare Aux Vacoas (Upper)			Mare Aux Vacoas (Lower)			Port -Louis			District water supply - North			District water supply - South			District water supply - East			Total production					
	Surface	Borehole	Total	Surface	Borehole	Total	Surface	Borehole	Total	Surface	Borehole	Total	Surface	Borehole	Total	Surface	Borehole	Total	Surface	Borehole	Total	Surface	Borehole	
	Mm³																							
2003	33.3	6.1	39.4	-	28.4	28.4	19.4	11.6	31.0	18.5	20.7	39.2	8.5	14.5	23.0	9.2	14.0	23.2	88.8	95.3	184.1	48%	52%	
Jan	2.9	0.5	3.4	-	2.2	2.2	1.7	0.9	2.6	1.6	1.8	3.4	0.8	1.3	2.1	0.7	1.2	2.0	7.6	8.0	15.6	49%	51%	
Feb	2.6	0.5	3.0	-	2.1	2.1	1.5	0.9	2.5	1.5	1.5	3.1	0.7	1.2	1.8	0.7	1.1	1.8	6.9	7.3	14.2	49%	51%	
Mar	2.9	0.5	3.4	-	2.5	2.5	1.7	1.1	2.8	1.5	1.8	3.3	0.7	1.2	2.0	0.8	1.2	2.0	7.6	8.3	15.9	48%	52%	
Apr	2.8	0.5	3.3	-	2.4	2.4	1.6	1.1	2.6	1.5	1.7	3.3	0.7	1.2	1.9	0.8	1.2	2.0	7.4	8.1	15.5	48%	52%	
May	2.8	0.6	3.4	-	2.6	2.6	1.2	1.1	2.3	1.7	1.7	3.4	0.7	1.2	2.0	0.8	1.2	2.1	7.2	8.4	15.7	46%	54%	
Jun	2.8	0.5	3.3	-	2.5	2.5	1.6	1.0	2.6	1.5	1.7	3.2	0.7	1.2	1.9	0.8	1.2	2.0	7.4	8.0	15.4	48%	52%	
Jul	2.9	0.5	3.4	-	2.5	2.5	1.7	0.9	2.6	1.5	1.8	3.3	0.7	1.2	1.9	0.8	1.2	2.0	7.6	8.1	15.7	49%	51%	
Aug	2.8	0.5	3.3	-	2.5	2.5	1.9	0.9	2.9	1.6	1.8	3.4	0.7	1.2	1.8	0.8	1.2	2.0	7.8	8.0	15.8	49%	51%	
Sep	2.7	0.5	3.2	-	2.4	2.4	1.7	1.0	2.7	1.5	1.8	3.2	0.7	1.2	1.9	0.8	1.1	1.9	7.3	8.0	15.3	48%	52%	
Oct	2.7	0.5	3.2	-	2.4	2.4	1.6	0.9	2.6	1.5	1.7	3.3	0.7	1.2	1.9	0.8	1.1	1.9	7.3	7.8	15.1	48%	52%	
Nov	2.7	0.5	3.2	-	2.2	2.2	1.6	0.9	2.5	1.5	1.7	3.3	0.7	1.2	2.0	0.7	1.1	1.8	7.3	7.7	15.0	49%	51%	
Dec	2.8	0.5	3.3	-	2.2	2.2	1.6	0.9	2.4	1.6	1.7	3.3	0.6	1.3	1.9	0.7	1.2	1.9	7.3	7.7	15.0	49%	51%	
2004	34.0	6.0	40.0	-	27.8	27.8	18.8	11.3	30.1	18.9	21.2	40.1	8.7	15.1	23.8	8.8	14.7	23.5	89.2	95.9	185.2	48%	52%	
Jan	2.9	0.5	3.4	-	2.3	2.3	1.7	1.2	2.9	1.6	1.8	3.3	0.7	1.3	2.0	0.7	1.2	1.9	7.6	8.2	15.8	48%	52%	
Feb	2.7	0.5	3.2	-	2.4	2.4	1.5	1.1	2.6	1.5	1.7	3.1	0.7	1.2	1.8	0.8	1.2	1.9	7.1	7.9	15.0	47%	53%	
Mar	2.9	0.5	3.4	-	2.5	2.5	1.7	0.9	2.6	1.6	1.8	3.4	0.7	1.2	2.0	0.8	1.3	2.1	7.7	8.2	15.9	48%	52%	
Apr	2.8	0.5	3.3	-	2.4	2.4	0.9	1.1	2.0	1.6	1.7	3.3	0.7	1.2	1.9	0.8	1.2	2.0	6.7	8.2	14.9	45%	55%	
May	2.9	0.5	3.4	-	2.5	2.5	0.9	1.1	2.0	1.6	1.7	3.3	0.7	1.2	1.9	0.8	1.3	2.1	6.8	8.3	15.1	45%	55%	
Jun	2.8	0.5	3.3	-	2.4	2.4	1.7	1.0	2.7	1.6	1.7	3.3	0.7	1.2	1.9	0.8	1.2	2.0	7.5	8.0	15.5	48%	52%	
Jul	2.9	0.5	3.4	-	2.4	2.4	1.8	0.8	2.7	1.6	1.8	3.4	0.7	1.3	2.0	0.8	1.2	2.0	7.8	8.1	15.8	49%	51%	
Aug	2.9	0.5	3.4	-	2.3	2.3	1.8	0.9	2.7	1.6	1.8	3.4	0.7	1.2	1.9	0.8	1.2	2.0	7.8	8.0	15.7	49%	51%	
Sep	3.0	0.5	3.5	-	2.2	2.2	1.9	0.7	2.6	1.6	1.8	3.4	0.8	1.4	2.1	0.7	1.2	1.9	7.8	7.8	15.6	50%	50%	
Oct	2.9	0.5	3.4	-	2.1	2.1	1.8	0.9	2.7	1.6	1.9	3.4	1.0	1.4	2.3	0.7	1.2	1.9	7.8	8.0	15.8	49%	51%	
Nov	2.7	0.5	3.2	-	2.1	2.1	1.6	0.7	2.4	1.6	1.8	3.4	0.8	1.3	2.1	0.6	1.3	1.9	7.3	7.6	15.0	49%	51%	
Dec	2.8	0.5	3.3	-	2.2	2.2	1.6	0.9	2.4	1.6	1.7	3.3	0.6	1.3	1.9	0.7	1.2	1.9	7.3	7.7	15.0	49%	51%	

Source: Central Water Authority

Table 6.9 - Average monthly potable water production from treatment plants and boreholes to distribution systems, 2003 - 2007 (Island of Mauritius) (cont'd)

Month	Mare Aux Vacoas (Upper)			Mare Aux Vacoas (Lower)			Port -Louis			District water supply - North			District water supply - South			District water supply - East			Total production			Surface	Borehole
	Surface	Borehole	Total	Surface	Borehole	Total	Surface	Borehole	Total	Surface	Borehole	Total	Surface	Borehole	Total	Surface	Borehole	Total	Surface	Borehole	Total		
	Mm³																						
2005	35.6	6.1	41.7	-	28.0	28.0	21.4	11.6	32.9	19.1	22.7	41.8	9.1	15.8	24.9	8.7	16.7	25.4	93.9	100.9	194.8	48%	52%
Jan	2.8	0.5	3.3	-	2.3	2.3	1.8	0.8	2.6	1.6	1.8	3.4	0.8	1.3	2.2	0.7	1.4	2.1	7.8	8.2	15.9	49%	51%
Feb	2.6	0.5	3.0	-	2.1	2.1	1.2	2.0	3.2	1.5	1.6	3.1	0.7	1.2	1.9	0.7	1.3	1.9	6.6	8.6	15.2	43%	57%
Mar	2.9	0.6	3.5	-	2.4	2.4	1.4	1.1	2.4	1.6	2.0	3.6	0.8	1.4	2.1	0.7	1.5	2.2	7.4	8.9	16.2	45%	55%
Apr	2.8	0.5	3.4	-	2.4	2.4	1.6	1.0	2.6	1.5	1.9	3.4	0.8	1.3	2.1	0.8	1.4	2.2	7.5	8.6	16.1	47%	53%
May	2.9	0.5	3.4	-	2.5	2.5	1.8	1.1	2.9	1.6	1.9	3.5	0.8	1.3	2.1	0.8	1.4	2.2	7.8	8.8	16.6	47%	53%
Jun	2.8	0.5	3.3	-	2.4	2.4	1.6	0.8	2.4	1.5	1.9	3.4	0.7	1.3	2.0	0.6	1.1	1.7	7.3	8.1	15.4	47%	53%
Jul	2.9	0.5	3.4	-	2.4	2.4	2.0	0.8	2.8	1.6	1.9	3.5	0.8	1.4	2.1	0.7	1.4	2.1	7.9	8.5	16.4	48%	52%
Aug	3.2	0.5	3.7	-	2.4	2.4	2.0	0.8	2.8	1.6	1.9	3.6	0.7	1.3	2.1	0.8	1.4	2.2	8.3	8.4	16.7	50%	50%
Sep	3.0	0.5	3.5	-	2.3	2.3	2.0	0.7	2.7	1.6	1.9	3.5	0.7	1.3	2.0	0.7	1.4	2.1	8.1	8.1	16.2	50%	50%
Oct	3.2	0.5	3.7	-	2.5	2.5	2.3	0.9	3.2	1.6	1.9	3.5	0.8	1.3	2.1	0.8	1.5	2.3	8.7	8.6	17.3	50%	50%
Nov	3.2	0.5	3.7	-	2.2	2.2	1.9	0.8	2.7	1.6	2.0	3.6	0.7	1.3	2.0	0.8	1.4	2.2	8.3	8.1	16.3	51%	49%
Dec	3.4	0.5	3.9	-	2.1	2.1	1.8	0.8	2.6	1.7	2.0	3.6	0.8	1.3	2.2	0.8	1.5	2.2	8.4	8.1	16.5	51%	49%
2006	36.8	5.8	42.6	-	17.8	17.8	21.0	10.4	31.4	20.2	22.3	42.4	9.3	16.0	25.2	8.8	18.5	27.3	96.0	90.8	186.8	51%	49%
Jan	3.4	0.5	3.9	-	0.5	0.5	1.8	0.8	2.7	1.6	2.0	3.6	0.8	1.4	2.2	0.8	1.4	2.2	8.5	6.5	15.0	57%	43%
Feb	3.1	0.5	3.5	-	0.5	0.5	1.8	0.8	2.6	1.5	1.5	3.0	0.7	1.2	1.9	0.8	1.4	2.2	7.8	5.8	13.7	57%	43%
Mar	3.5	0.5	4.0	-	0.5	0.5	1.2	1.8	2.9	1.6	1.6	3.2	0.8	1.3	2.1	0.8	1.6	2.4	7.9	7.3	15.2	52%	48%
Apr	3.4	0.5	3.9	-	0.5	0.5	1.9	0.8	2.7	1.6	1.6	3.2	0.8	1.3	2.1	0.8	1.5	2.3	8.5	6.1	14.6	58%	42%
May	3.4	0.5	3.8	-	0.5	0.5	2.0	0.7	2.7	1.6	2.0	3.6	0.8	1.3	2.1	0.8	1.5	2.3	8.5	6.5	15.0	57%	43%
Jun	3.0	0.5	3.5	-	2.2	2.2	1.8	0.8	2.7	1.6	1.9	3.5	0.7	1.3	2.0	0.8	1.5	2.3	8.0	8.2	16.2	49%	51%
Jul	3.0	0.5	3.6	-	2.4	2.4	1.9	0.8	2.8	1.6	2.0	3.6	0.8	1.3	2.1	0.8	1.6	2.4	8.1	8.6	16.7	48%	52%
Aug	2.9	0.5	3.4	-	2.3	2.3	1.9	0.8	2.7	1.5	2.1	3.6	0.8	1.4	2.2	0.7	1.6	2.3	7.8	8.6	16.4	47%	53%
Sep	2.7	0.5	3.2	-	2.2	2.2	1.8	0.8	2.6	1.5	2.0	3.5	0.8	1.4	2.1	0.7	1.5	2.2	7.5	8.3	15.8	48%	52%
Oct	2.9	0.5	3.3	-	2.2	2.2	1.8	0.7	2.6	1.8	2.0	3.8	0.8	1.4	2.2	0.7	1.7	2.3	8.0	8.5	16.5	48%	52%
Nov	2.6	0.4	3.1	-	2.1	2.1	1.6	0.7	2.3	2.0	1.9	3.8	0.8	1.4	2.1	0.6	1.7	2.3	7.5	8.2	15.7	48%	52%
Dec	2.9	0.4	3.3	-	2.1	2.1	1.5	0.8	2.2	2.2	1.8	4.0	0.8	1.4	2.2	0.7	1.6	2.3	8.0	8.1	16.1	50%	50%

Source: Central Water Authority

Table 6.9- Average monthly potable water production from treatment plants and boreholes to distribution systems, 2003 - 2007 (Island of Mauritius) (cont'd)

Month	Mare Aux Vacoas (Upper)			Mare Aux Vacoas (Lower)			Port -Louis			District water supply - North			District water supply - South			District water supply - East			Total production				
	Surface	Borehole	Total	Surface	Borehole	Total	Surface	Borehole	Total	Surface	Borehole	Total	Surface	Borehole	Total	Surface	Borehole	Total	Surface	Borehole	Total	Surface	Borehole
	Mm ³																						
2007	38.6	6.1	44.7	-	31.6	31.6	20.3	11.0	31.3	23.7	22.1	45.8	9.2	16.3	25.5	8.6	18.0	26.6	100.5	105.0	205.5	49%	51%
Jan	2.9	0.4	3.3	-	2.1	2.1	1.6	0.7	2.3	2.1	1.8	3.9	0.7	1.6	2.3	0.8	1.3	2.1	8.1	7.9	15.9	51%	49%
Feb	2.8	0.5	3.2	-	2.0	2.0	1.5	0.7	2.2	2.0	1.7	3.7	0.7	1.1	1.8	0.6	1.6	2.2	7.6	7.6	15.1	50%	50%
Mar	3.3	0.5	3.7	-	2.2	2.2	1.6	1.3	2.9	2.2	1.9	4.1	0.8	1.4	2.2	0.8	1.7	2.5	8.6	9.0	17.6	49%	51%
Apr	3.2	0.5	3.7	-	2.5	2.5	1.7	0.9	2.5	2.1	1.9	4.0	0.7	1.4	2.1	0.8	1.6	2.3	8.4	8.7	17.1	49%	51%
May	3.3	0.5	3.9	-	2.6	2.6	1.8	0.8	2.6	2.1	2.1	4.1	0.8	1.4	2.2	0.7	1.7	2.4	8.7	9.0	17.7	49%	51%
Jun	3.2	0.5	3.7	-	2.3	2.3	1.7	0.7	2.5	2.0	1.9	3.9	0.8	1.4	2.2	0.7	1.6	2.3	8.4	8.4	16.8	50%	50%
Jul	3.4	0.6	3.9	-	3.1	3.1	1.8	1.2	3.0	1.7	2.1	3.7	0.7	1.3	2.1	0.8	1.4	2.2	8.4	9.6	17.9	47%	53%
Aug	3.5	0.5	4.0	-	3.1	3.1	1.9	1.0	2.9	1.8	2.0	3.8	0.8	1.3	2.1	0.8	1.4	2.1	8.7	9.3	17.9	48%	52%
Sep	3.2	0.5	3.7	-	2.8	2.8	1.8	1.0	2.8	1.7	2.0	3.7	0.8	1.4	2.1	0.7	1.4	2.1	8.2	9.0	17.3	48%	52%
Oct	3.3	0.6	3.8	-	3.1	3.1	1.8	1.0	2.8	2.1	1.6	3.6	0.8	1.4	2.2	0.6	1.5	2.1	8.6	9.0	17.6	49%	51%
Nov	3.5	0.5	4.0	-	3.1	3.1	1.7	1.0	2.7	2.1	1.6	3.7	0.9	1.5	2.3	0.7	1.5	2.2	8.8	9.1	17.9	49%	51%
Dec	3.2	0.5	3.7	-	2.8	2.8	1.5	0.9	2.4	2.0	1.6	3.5	0.8	1.3	2.1	0.7	1.5	2.1	8.2	8.5	16.7	49%	51%

Source: Central Water Authority

72

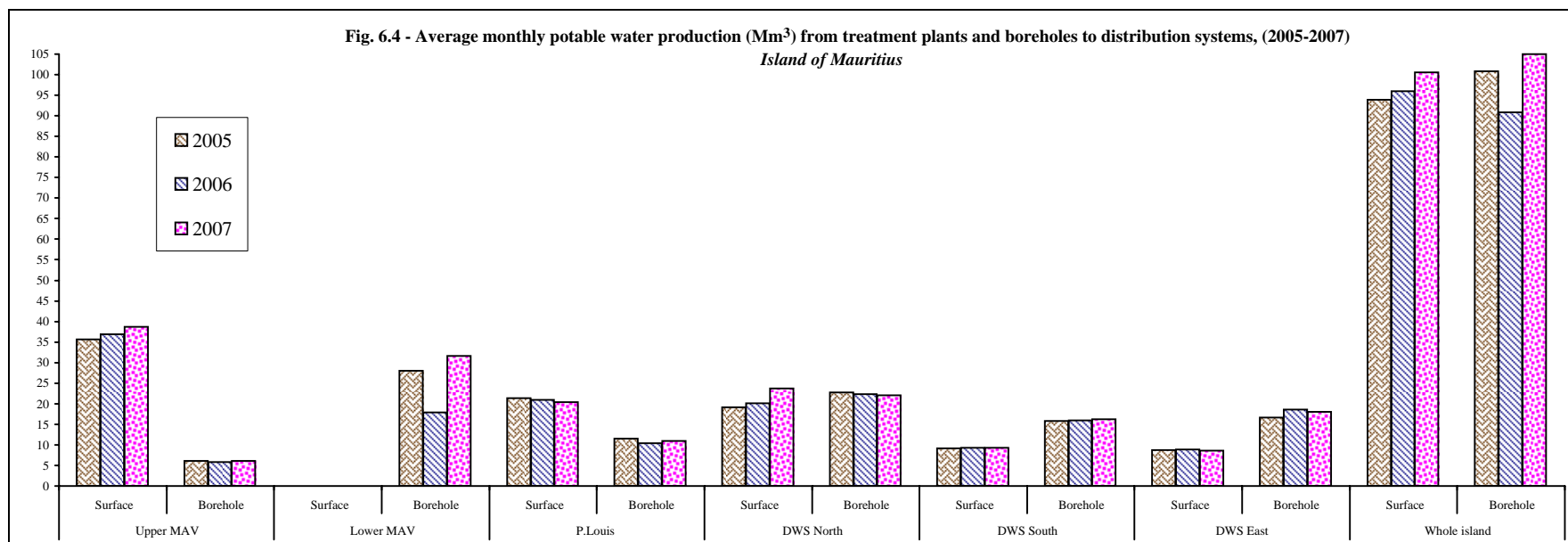


Table 6.10 - Water sales by type of tariff of subscriber, 2003 - 2007 (Island of Mauritius)

Type of tariff	2003	2004	2005	2006	2007	2003	2004	2005	2006	2007
	No. of subscribers					% distribution of subscribers				
Domestic	250,752	258,381	265,763	272,269	278,625	93.8	93.9	93.9	93.8	93.4
Government	3,614	3,585	3,708	3,763	3,879	1.4	1.3	1.3	1.3	1.3
Acquired / concessionary prizes	48	47	45	45	43	0.0	0.0	0.0	0.0	0.0
Commercial	9,455	9,638	9,823	10,102	11,260	3.5	3.5	3.5	3.5	3.8
Hotels, Guest Houses	192	188	197	206	224	0.1	0.1	0.1	0.1	0.1
Industrial	762	746	741	736	744	0.3	0.3	0.3	0.3	0.2
Sub total	264,823	272,585	280,277	287,121	294,775	99.1	99.0	99.0	98.9	98.9
Vegetable & Livestock producers	2,164	2,377	2,632	2,871	3,129	0.8	0.9	0.9	1.0	1.0
Total potable water	266,997	274,962	282,909	289,992	297,904	99.9	99.9	99.9	99.9	99.9
Total non-treated water (agriculture/Industrial)	253	254	267	276	278	0.1	0.1	0.1	0.1	0.1
Grand Total	267,250	275,216	283,176	290,268	298,182	100.0	100.0	100.0	100.0	100.0
	Volume sold (thousand m ³)					% Consumption				
Domestic	70,253	70,562	73,055	73,158	73,007	67.7	68.9	67.8	67.4	66.0
Government	4,228	4,285	4,632	4,631	4,686	4.1	4.2	4.3	4.3	4.2
Acquired / concessionary prizes	23	20	19	17	16	0.0	0.0	0.0	0.0	0.0
Commercial	5,573	5,653	5,790	5,987	6,743	5.4	5.5	5.4	5.5	6.1
Hotels, Guest Houses	3,644	3,694	4,080	4,267	4,429	3.5	3.6	3.8	3.9	4.0
Industrial	4,988	4,775	4,770	4,712	4,827	4.8	4.7	4.4	4.3	4.4
Sub total	88,708	88,989	92,344	92,772	93,708	85.5	86.9	85.6	85.4	84.7
Vegetable & Livestock producers	1,103	1,131	1,322	1,433	1,421	1.1	1.1	1.2	1.3	1.3
Total potable water	89,812	90,121	93,666	94,205	95,129	86.5	88.0	86.9	86.7	86.0
Total non-treated water (agriculture/Industrial)	13,993	12,265	14,161	14,412	15,490	13.5	12.0	13.1	13.3	14.0
Grand Total	103,805	102,386	107,827	108,617	110,619	100.0	100.0	100.0	100.0	100.0
	Amount collectible Rs.(000)					Average sales price (Rs/ m ³)				
Domestic	505,750	502,533	523,112	551,036	549,907	7.20	7.12	7.16	7.53	7.53
Government	77,117	76,023	77,890	82,060	84,235	18.24	17.74	16.82	17.72	17.98
Acquired / concessionary prizes	169	138	125	123	117	7.46	6.93	6.73	7.16	7.31
Commercial	92,332	93,477	95,712	101,014	115,157	16.57	16.54	16.53	16.87	17.08
Hotels, Guest Houses	106,544	108,072	119,215	124,867	129,650	29.24	29.25	29.22	29.26	29.27
Industrial	74,734	72,079	71,797	71,250	72,998	14.98	15.10	15.05	15.12	15.12
Sub total	856,645	852,323	887,851	930,350	952,064	9.66	9.58	9.61	10.03	10.16
Vegetable & Livestock producers	8,615	8,833	10,109	11,176	11,282	7.81	7.81	7.65	7.80	7.94
Total potable water	865,260	861,155	897,960	941,526	963,346	9.63	9.56	9.59	9.99	10.13
Total non-treated water (agriculture/Industrial)	38,420	36,295	36,565	38,224	41,120	2.75	2.96	2.58	2.65	2.65
Grand Total	903,680	897,450	934,526	979,750	1,004,466	8.71	8.77	8.67	9.02	9.08

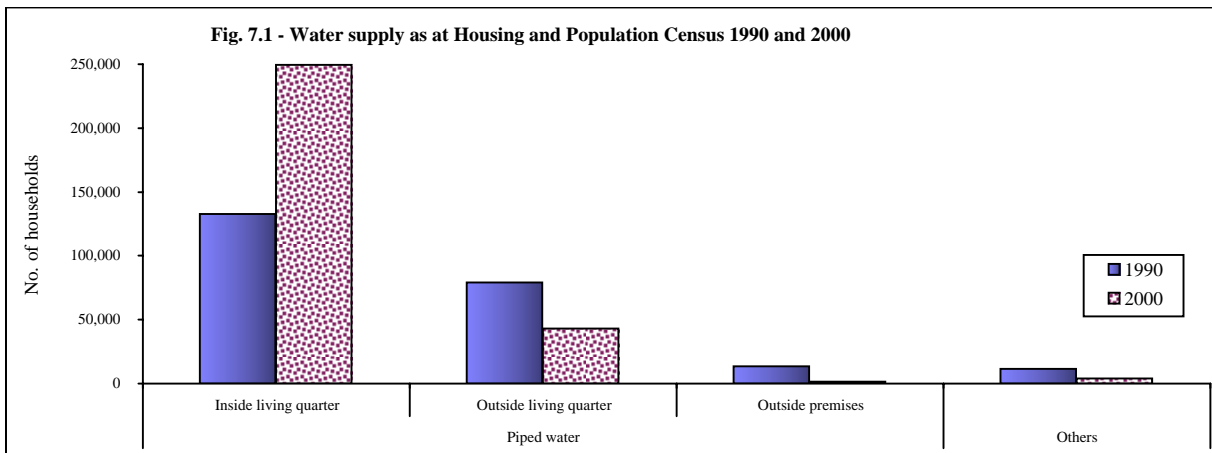
Source: Central Water Authority

Section VII

Water data from
Housing and Population Census

Table 7.1 - Private households by geographical location of residence and type of water supply - 1990 & 2000

Geographical location	Water supply							Total
	Piped water			Tank wagon	Well/river	Other	Not stated	
	Inside living quarter	Outside living quarter	Outside premises/public fountain					
Housing and Population Census 1990								
Island of Mauritius								
Port Louis	16,040	13,792	248	6	23	666	5	30,780
Pamplemousses	10,056	9,605	956	36	98	957	1	21,709
Riviere du Rempart	7,757	8,415	1,912	6	9	615	2	18,716
Flacq	8,499	10,286	4,030	131	68	772	1	23,787
Grand Port	10,482	7,392	1,792	23	82	1,411	1	21,183
Savanne	6,853	4,544	993	17	32	1,141	2	13,582
Plaines Wilhems	60,623	13,289	505	11	46	1,009	9	75,492
Moka	7,191	5,102	1,229	146	108	491	-	14,267
Black River	4,188	4,606	531	13	44	468	1	9,851
Total	131,689	77,031	12,196	389	510	7,530	22	229,367
	(57.4%)	(33.6%)	(5.3%)	(0.2%)	(0.2%)	(3.3%)	(0.0%)	(100.0%)
Island of Rodrigues	849	2,317	1,265	19	2,582	236	-	7,268
Republic of Mauritius	132,538	79,348	13,461	408	3,092	7,766	22	236,635
	(56.0%)	(33.5%)	(5.7%)	(0.2%)	(1.3%)	(3.3%)	(0.0%)	(100.0%)
Housing and Population Census 2000								
Island of Mauritius								
Port Louis	25,245	6,945	333	10	2	216	2	32,753
Pamplemousses	24,093	5,498	78	14	16	187	-	29,886
Riviere du Rempart	20,220	3,912	140	3	-	167	-	24,442
Flacq	22,763	7,207	154	13	9	565	2	30,713
Grand Port	22,202	3,882	66	54	20	452	-	26,676
Savanne	13,801	2,526	123	0	17	351	-	16,818
Plaines Wilhems	89,868	3,636	14	4	9	230	1	93,762
Moka	16,134	2,171	24	28	11	172	1	18,541
Black River	11,879	3,085	181	7	12	414	1	15,579
Total	246,205	38,862	1,113	133	96	2,754	7	289,170
	(85.1%)	(13.4%)	(0.4%)	(0.0%)	(0.0%)	(1.0%)	(0.0%)	(100.0%)
Island of Rodrigues	3,163	4,270	359	67	410	382	-	8,651
Agalega	-	-	-	-	-	60	-	60
Republic of Mauritius	249,368	43,132	1,472	200	506	3,196	7	297,881
	(83.7%)	(14.5%)	(0.5%)	(0.1%)	(0.2%)	(1.1%)	(0.0%)	(100.0%)



**Table 7.2 - Private households by geographical location of residence and availability of water tank and connection to sewerage system
- Housing and Population Census 2000**

Geographical location	Availability of domestic water tank/reservoir				Connection to Sewerage system	
	Available	Not Available	Not stated	Total	Connected	Not connected
Island of Mauritius						
Port Louis	8,990	23,758	5	32,753	25,042	7,711
Pamplemousses	10,492	19,392	2	29,886	636	29,250
Riviere du Rempart	8,401	16,031	10	24,442	57	24,385
Flacq	6,617	24,081	15	30,713	111	30,602
Grand Port	7,870	18,799	7	26,676	49	26,627
Savanne	3,757	13,059	2	16,818	28	16,790
Plaines Wilhems	48,088	45,647	27	93,762	28,535	65,227
Moka	6,289	12,248	4	18,541	1,402	17,139
Black River	4,730	10,842	7	15,579	2,592	12,987
Total	105,234	183,857	79	289,170	58,452	230,718
	<i>(36.4%)</i>	<i>(63.6%)</i>	<i>(0.0%)</i>	<i>(100.0%)</i>	<i>(20.2%)</i>	<i>(79.8%)</i>
Island of Rodrigues	3,273	5,372	6	8,651	26	8,625
Agalega	40	20	-	60	-	60
Republic of Mauritius	108,547	189,249	85	297,881	58,478	239,403
	<i>(36.4%)</i>	<i>(63.5%)</i>	<i>(0.0%)</i>	<i>(100.0%)</i>	<i>(19.6%)</i>	<i>(80.4%)</i>