

# **CHAPTER 2**

## **FAUNA**

**Table 2.1 - Number of small breeders and livestock population by geographical district as at June 2007**

District	Cattle		Goat		Sheep		Pig	
	No. of farmers	Total no. of heads	No. of farmers	Total no. of heads	No. of farmers	Total no. of heads	No. of farmers	Total no. of heads
Pamplemousses	189	711	632	4,558	26	191	36	1,016
Riviere du Rempart	368	1,396	452	4,535	18	356	46	440
Flacq	550	1,327	1,068	7,888	26	265	109	2,801
Plaines Wilhems	150	656	66	440	0	0	12	449
Moka	126	433	42	271	0	0	10	210
Grand Port	165	953	360	2,490	9	79	49	851
Savanne	48	238	150	1,016	8	92	13	254
Black River/Port Louis	104	826	313	3,213	9	118	221	11,202
<b>Total</b>	<b>1,700</b>	<b>6,540</b>	<b>3,083</b>	<b>24,411</b>	<b>96</b>	<b>1,101</b>	<b>496</b>	<b>17,223</b>

Source : Agricultural Research and Extension Unit, Ministry of Agro Industry and Fisheries.

**Table 2.2 - Livestock herd and poultry status by geographical district as at June 2007**

District	Cattle						Pig					
	No. of farmers	Cows	Calves	Heifers	Bulls	Total no. of heads	No. of farmers	Boars	Sows	Piglets	Fatteners	Total no. of heads
Pamplemousses	189	244	18	176	273	711	36	28	277	333	378	1,016
Riviere du Rempart	368	360	76	303	657	1,396	46	25	95	143	177	440
Flacq	550	513	201	353	260	1,327	109	46	271	517	1,967	2,801
Plaines Wilhems	150	201	26	175	254	656	12	11	87	171	180	449
Moka	126	180	32	140	81	433	10	22	40	87	61	210
Grand Port	165	198	165	268	322	953	49	32	149	320	350	851
Savanne	48	101	21	60	56	238	13	8	22	42	182	254
Black River/Port Louis	104	174	75	115	462	826	221	193	1,414	3,357	6,238	11,202
<b>Total</b>	<b>1,700</b>	<b>1,971</b>	<b>614</b>	<b>1,590</b>	<b>2,365</b>	<b>6,540</b>	<b>496</b>	<b>365</b>	<b>2,355</b>	<b>4,970</b>	<b>9,533</b>	<b>17,223</b>

Source : Agricultural Research and Extension Unit, Ministry of Agro Industry and Fisheries

**Table 2.2 (cont'd) - Livestock herd and poultry status by geographical district as at June 2007**

District	Sheep				Goat				Poultry <sup>1</sup>					
	No. of farmers	Ewes	Ram	Followers	Total no. of heads	No. of farmers	Bucks	Does	Kids	Total no. of heads	No. of farmers	Broilers	No. of farmers	Layers
Pamplemousses	26	67	82	42	191	632	1,334	1,788	1,436	4,558	36	75,455	31	63,287
Riviere du Rempart	18	126	163	67	356	452	1,453	1,588	1,494	4,535	38	65,798	69	19,089
Flacq	26	98	71	96	265	1,068	2,404	2,570	2,914	7,888	96	101,806	64	28,528
Plaines Wilhems	0	0	0	0	0	66	109	170	161	440	35	93,750	34	68,192
Moka	0	0	0	0	0	42	71	105	95	271	36	110,050	19	87,035
Grand Port	9	41	9	29	79	360	763	902	825	2,490	28	16,615	36	16,732
Savanne	8	37	19	36	92	150	268	423	325	1,016	37	32,190	48	31,540
Black River/Port Louis	9	53	32	33	118	313	850	1,188	1,175	3,213	34	581,850	34	19,386
<b>Total</b>	<b>96</b>	<b>422</b>	<b>376</b>	<b>303</b>	<b>1,101</b>	<b>3,083</b>	<b>7,252</b>	<b>8,734</b>	<b>8,425</b>	<b>24,411</b>	<b>340</b>	<b>1,077,514</b>	<b>335</b>	<b>333,789</b>

Source : Agricultural Research and Extension Unit, Ministry of Agro Industry and Fisheries

<sup>1</sup> Exclude industrial farm

**Table 2.3 - Production of selected agro-industrial products, Republic of Mauritius, 1998 - 2007**

Detail	Unit	1998	1999	2000	2001	2002	2003	2004	2005	2006 <sup>1</sup>	2007 <sup>2</sup>
Beef <sup>3</sup>	tonnes	2,516	2,575	2,538	2,248	2,428	2,505	2,456	2,484	2,187	1,847
<i>Local (including Rodrigues)</i>	"	340	279	240	375	208	202	137	73	99	90
<i>Imported</i>	"	2,176	2,296	2,298	1,873	2,221	2,303	2,319	2,411	2,088	1,757
Goat meat and mutton <sup>3</sup>	"	118	125	102	114	114	107	107	111	99	75
Pork <sup>3</sup>	"	752	678	891	882	756	785	743	709	681	511
Poultry	"	18,300	20,900	25,600	27,200	29,305	30,000	33,000	33,000	36,000	40,000
Milk	'000 Litres	5,500	5,000	4,000	4,000	4,000	4,000	4,000	4,000	4,000	3,500

<sup>1</sup> Revised

<sup>2</sup> Provisional

<sup>3</sup> Abattoir slaughters only

**Table 2.4 - Fish production by type of fishery (in fresh - weight equivalent) , 1998 - 2007**

Tonnes											
Type of fishery	Type	1998	1999	2000	2001	2002	2003	2004	2005	2006	2007
<b>Artisanal fishery</b>											
Coastal fishery-Island of Mauritius	Fresh	1,229	1,225	1,360	1,075	1,302	1,166	1,043	947	950	640
Sports fishery	Fresh	650	650	650	650	650	650	650	650	650	650
Amateur fishery	Fresh	300	300	300	300	300	300	300	300	300	300
Barachois	Fresh	13	10	5	6	7	6	4	4	2	2
Ponds (prawn and fish)	Fresh	93	71	82	52	39	27	437	374	436	17
Marine aquaculture	Fresh	...	...	...	...	...	...	...	...	...	150
FAD <sup>1</sup> fishery	Fresh	...	...	...	...	...	...	...	...	214	164
<b>Offshore demersal fishery</b>											
Shallow water banks	Frozen	3,731	4,297	4,303	3,366	3,943	3,713	3,216	2,178	3,112	2,848
Banks deep water snappers	Fresh	226	-	55	329	5	-	-	-	-	-
St Brandon inshore	Frozen & salted	594	557	497	557	491	578	311	414	235	54
Semi - industrial chilled fish	Chilled	102	172	185	188	204	234	178	223	311	171
Tuna fishery	Frozen	2,848	3,304	417	-	219	1,118	1,640	1,402	1,380	803
Sword fish fishery	Chilled	-	-	21	87	45	111	97	177	247	184
Demersal trawlers	Frozen	-	-	-	2,184	2,113	1,806	1,595	2,584	1,112	-
Total		9,786	10,586	7,875	8,794	9,318	9,709	9,471	9,253	8,949	5,983

Source : Albion Fisheries Research Centre, Ministry of Agro Industry and Fisheries

Note : Tuna production dropped considerably in the year 2000 because the mauritian purse seiner had stopped operation but the production picked up later.

<sup>1</sup> FAD: Fish Aggregating device

**Table 2.5 - Annual fish catch of the coastal (artisanal) fishery by gear - type, 1998 - 2007**

Gear-type	Tonnes									
	1998	1999	2000	2001	2002	2003	2004	2005	2006	2007
Basket trap	394.4	282.0	404.9	357.5	450.8	492.6	425.3	433.8	343.8	251.2
Line	264.2	339.1	503.2	368.4	429.3	373.4	285.8	288.8	303.7	169.9
Basket trap and Line	212.3	156.0	83.3	59.1	91.8	17.5	54.9	16.8	19.6	16.2
Large net	217.1	294.7	230.7	172.9	183.4	160.6	168.1	121.5	201.1	132.7
Gill net	16.8	16.0	12.8	11.4	25.3	13.6	11.3	8.2	11.3	7.6
Cast net/Harpoon/on foot	123.9	137.1	125.1	105.9	121.1	108.1	97.4	78.2	70.5	62.4
Total	1,228.8	1,224.8	1,360.0	1,075.2	1,301.7	1,165.8	1,042.8	947.3	950.0	640.0

Source : Albion Fisheries Research Centre, Ministry of Agro Industry and Fisheries

**Table 2.6 - Number of active fishermen by gear - type, 1998 - 2007**

<b>Gear-type</b>	<b>1998</b>	<b>1999</b>	<b>2000</b>	<b>2001</b>	<b>2002</b>	<b>2003</b>	<b>2004</b>	<b>2005</b>	<b>2006</b>	<b>2007</b>
Basket trap	242	256	286	519	501	473	445	493	275	283
Line/Harpoon	451	523	642	678	734	749	896	789	764	770
Basket trap and Line	561	609	559	610	600	670	736	689	1,111	876
Large net	270	270	226	180	165	177	159	189	149	137
Gill net	23	27	28	27	28	17	20	14	13	12
Cast net	38	31	-	-	-	-	-	-	-	-
<b>Total</b>	<b>1,585</b>	<b>1,716</b>	<b>1,741</b>	<b>2,014</b>	<b>2,028</b>	<b>2,086</b>	<b>2,256</b>	<b>2,174</b>	<b>2,312</b>	<b>2,078</b>

Source : Albion Fisheries Research Centre, Ministry of Agro Industry and Fisheries

**Table 2.7 - Fisherman-days and total catch <sup>1</sup> from the lagoon and off lagoon, 1998 - 2007**

Year	Fisherman-days			Catch (tonnes)
	Lagoon	Off lagoon	Total	
1998	173,153	68,882	242,035	1,229
1999	170,612	70,107	240,719	1,225
2000	147,649	74,973	222,622	1,360
2001	144,927	93,744	238,671	1,075
2002	192,116	108,708	300,824	1,302
2003	189,988	83,362	273,350	1,166
2004	195,087	58,516	263,603	1,043
2005	153,771	77,429	231,200	947
2006	145,089	68,961	241,050	950
2007	92,261	51,622	144,883	640

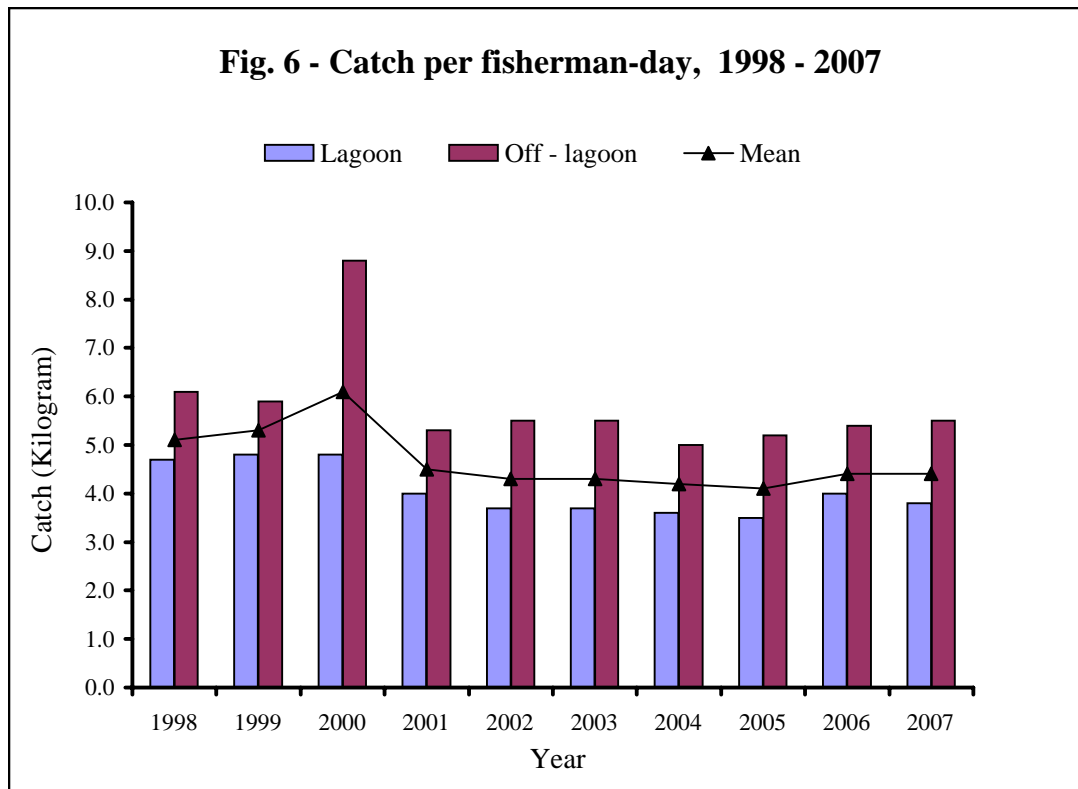
Source : Albion Fisheries Research Centre, Ministry of Agro Industry and Fisheries

<sup>1</sup> Coastal (artisanal) fishery

**Table 2.8 - Catch per fisherman-day, 1998 - 2007**

Year	Kilogram		
	Lagoon	Off - lagoon	Mean
1998	4.7	6.1	5.1
1999	4.8	5.9	5.3
2000	4.8	8.8	6.1
2001	4.0	5.3	4.5
2002	3.7	5.5	4.3
2003	3.7	5.5	4.3
2004	3.6	5.0	4.2
2005	3.5	5.2	4.1
2006	4.0	5.4	4.4
2007	3.8	5.5	4.4

Source : Albion Fisheries Research Centre, Ministry of Agro Industry and Fisheries



**Table 2.9 - Average price of fresh fish and other sea food, 1998 - 2007**

Species	Rupees per kilogram									
	1998	1999	2000	2001	2002	2003	2004	2005	2006	2007
Homard	365	370	415	475	475	480	495	515	550	600
Crab and crevette	270	270	260	270	295	285	275	290	275	320
Vieille rouge	175	180	185	180	185	180	190	215	230	255
Vacoas, sacrechien	140	135	140	145	150	150	160	160	175	175
Capitaine	120	125	135	140	145	140	155	170	170	180
Dame berri	110	110	120	130	135	130	140	150	170	170
Octopus	85	90	90	100	100	100	105	125	130	135
Carangue	85	85	95	100	110	100	115	115	120	130
Cordonier	80	80	80	85	85	90	100	105	115	120
Rouget, tuna	80	75	80	80	80	85	90	95	110	115
Mulet voile	65	65	70	75	75	80	85	95	100	105
Bordemar	75	75	80	80	80	85	100	95	90	110
Licorne	75	75	80	85	95	95	100	115	115	125
Cateaux	60	60	65	65	70	75	75	70	85	90
Other fish	45	45	45	45	45	40	55	50	65	75
Shark	25	25	25	35	35	55	45	45	50	50

Source : Albion Fisheries Research Centre, Ministry of Agro Industry and Fisheries

**Table 2.10 - Annual catch by banks, 1998 - 2007**

Tonnes<sup>1</sup>

Year	Saya de Malha	Nazareth	St. Brandon	Chagos	Albatros	Total catch
1998	2,054	1,086	400	81	76	3,697
1999	2,107	1,121	452	127	226	4,033
2000	2,099	1,080	356	312	141	3,899
2001	1,283	1,366	359	228	202	3,438
2002	2,090	918	375	223	161	3,767
2003	2,355	469	510	235	172	3,741
2004	1,693	881	359	124	117	3,174
2005	1,028	578	344	0	163	2,113
2006	1,645	777	292	136	177	3,027
2007	1,513	732	140	130	74	2,589

Source : Albion Fisheries Research Centre, Ministry of Agro Industry and Fisheries

<sup>1</sup> Product weight = Brought frozen without offals

St Brandon includes frozen, salted and chilled fish product weight

Albatross include catch by banks and from St Martin

**Table 2.11- Import, export and trade balance of fish and fish products, 1998 - 2007**

Year	1998	1999	2000	2001	2002	2003	2004	2005	2006	2007
Imports										
Quantity (tonnes)	34,331	30,339	42,146	52,050	87,335	63,515	81,315	104,830	150,728	129,085
Value (Rupees million)	1,113.2	793.1	1,057.9	1,754.3	3,984.7	2,540.4	3,186.6	4,261.2	6,720.9	7,068.0
Exports										
Quantity (tonnes)	13,022	15,206	18,151	27,381	49,558	50,329	54,241	67,249	79,707	86,170
Value (Rupees million)	972.6	971.2	961.5	1,840.8	4,078.6	3,167.3	3,358.1	4,842.1	7,120.4	8,172.8
Trade Balance ( Rupees million )	-140.6	178.1	-96.4	86.5	93.9	624.9	171.5	580.9	395.5	1,104.8

Source : Albion Fisheries Research Centre, Ministry of Agro Industry and Fisheries

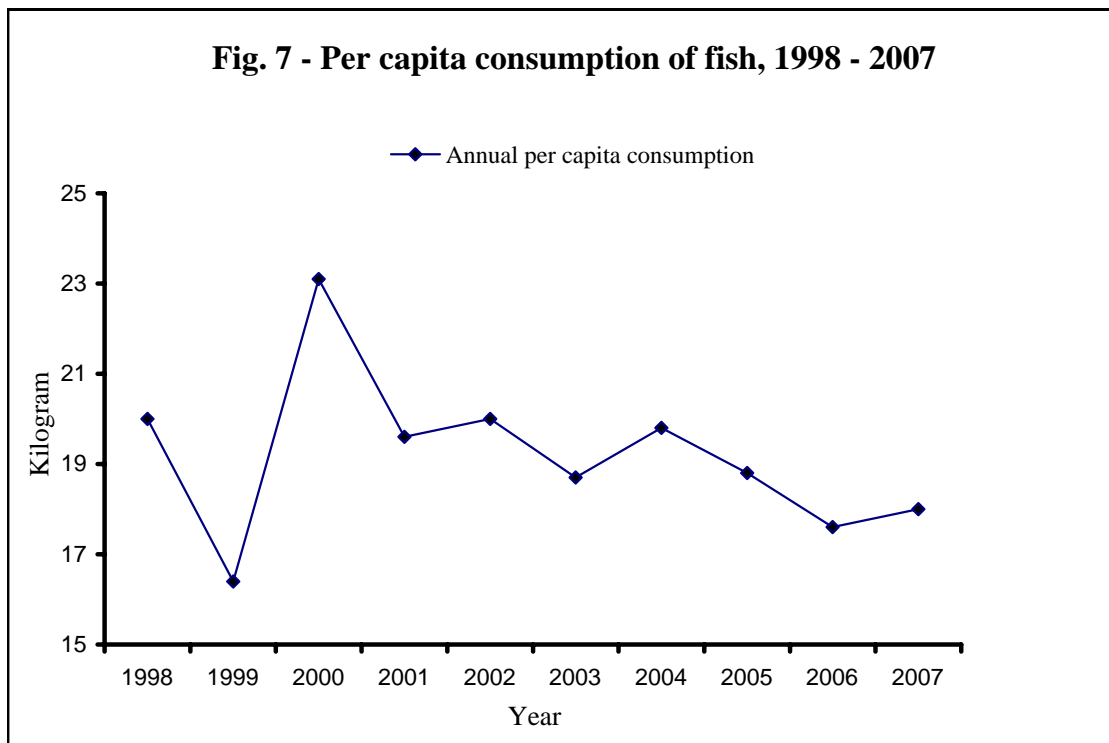
**Table 2.12 - Total number and type of fishing vessels calling at Port Louis , 1998 - 2007**

Type/category	1998	1999	2000	2001	2002	2003	2004	2005	2006	2007
Tuna long liners and squid vessels	481	456	452	476	448	392	419	628	708	561
Purse seiners (local)	9	3	2	-	-	2	2	8	9	13
Reefers	24	37	46	50	39	42	33	32	48	62
Trawlers	10	18	55	52	22	20	20	13	13	8
Hand liners	58	75	63	56	108	179	217	190	179	137
Long liners (Ice cod fish sp.) (Patagonian tooth fish vessel)	88	47	80	62	44	51	24	19	21	18
Others, unspecified vessels	...	...	...	...	2	2	3	4	1	1
<b>Total</b>	<b>670</b>	<b>636</b>	<b>698</b>	<b>696</b>	<b>663</b>	<b>688</b>	<b>718</b>	<b>894</b>	<b>979</b>	<b>800</b>

Source : Albion Fisheries Research Centre, Ministry of Agro Industry and Fisheries

**Table 2.13 - Per capita consumption of fish, 1998 - 2007**

Year	Quantity
1998	20.0
1999	16.4
2000	23.1
2001	19.6
2002	20.0
2003	18.7
2004	19.3
2005	18.8
2006	17.6
2007	18.0



**Table 2.14 - Cases of poisoning<sup>1</sup> by noxious fish and shellfish, venomous animals and plants, 1998 - 2007**

	1998	1999	2000	2001	2002	2003	2004	2005	2006	2007
<b>Total</b>										
General hospital discharges due to accidental poisoning by noxious fish and shellfish	22	69	53	67	26	79	50	60	46	32
General hospital discharges due to venomous animals and plants as the cause of poisoning and toxic reactions	201	186	170	189	93	159	222	193	287	150
<b>Male</b>										
General hospital discharges due to accidental poisoning by noxious fish and shellfish	13	32	26	33	12	40	19	24	21	18
General hospital discharges due to venomous animals and plants as the cause of poisoning and toxic reactions	149	155	118	144	71	109	176	137	167	112
<b>Female</b>										
General hospital discharges due to accidental poisoning by noxious fish and shellfish	9	37	27	34	14	39	31	36	25	14
General hospital discharges due to venomous animals and plants as the cause of poisoning and toxic reactions	52	31	52	45	22	50	46	56	120	38

Source : Statistics Unit, Ministry of Health and Quality of Life

<sup>1</sup> Cases treated as in - patients in Government General Hospitals

**Table 2.15 - List of fishable areas, Republic of Mauritius**

Kilometre square

Region	Depth	Area
Mauritius	Up to 100 metres	1,208
Banks		
Saint Brandon	0 - 35 metres	2,950
Nazareth	0 - 35 metres	7,625
Saya de Malha	0 - 100 metres	28,350
Chagos	0 - 35 metres	6,830
Rodrigues	0 - 100 metres	1,688
Agalega	0- 100 metres	15
Tromelin	...	...
Total		48,666

Source : State of the Environment Report - 1991

**Table 2.16 - Percentage of substrate cover at various monitoring stations, 2005 - 2006**

Site		Year	Coral	Algae	Abiotic <sup>1</sup>	Other <sup>2</sup>
<b>Baie du Tombeau</b>	Back reef	2005	64	2	34	n.o
		2006	-	-	-	-
<b>Le Goulet</b>	Fore reef	2005	74	2	21	3
		2006	74	5	16	3
<b>Ile aux Benitiers</b>	Fore reef	2005	26	1	71	n.o
		2006	-	-	-	-
	Back reef	2005	7	2	92	n.o
		2006	-	-	-	-
	Shore reef	2005	15	0	85	n.o
		2006	-	-	-	-
<b>Bel Ombre</b>	Back reef	2005	24	42	34	n.o
		2006	17	24	55	2
	Shore reef	2005	48	4	48	n.o
		2006	45	9	42	n.o
<b>Bambous Virieux</b>	Back reef	2005	48	14	37	1
		2006	-	-	-	-
	Shore reef	2005	35	49	16	n.o
		2006	-	-	-	-
<b>Trou d'eau Douce</b>	Back reef	2005	-	-	-	-
		2006	-	-	-	-
	Shore reef	2005	59	2	36	3
		2006	-	-	-	-
<b>Anse La Raie</b>	Back reef	2005	37	27	36	n.o
		2006	70	14	15	n.o
	Shore reef	2005	75	5	20	n.o
		2006	74	20	6	n.o
<b>Trou Aux Biches</b>	Back reef	2005	40	2	58	n.o
		2006	-	-	-	-
	Fore reef	2005	28	6	64	2
		2006	-	-	-	-
<b>Pointe Aux Sables</b>	Back reef	2005	39	6	53	n.o
		2006	47	1	47	n.o
	Fore reef	2005	-	-	-	-
		2006	-	-	-	-
<b>Albion</b>	Back reef	2005	19	22	59	n.o
		2006	12	13	75	n.o
	Fore reef	2005	27	2	68	3
		2006	20	10	66	4
<b>Poudre D'Or Site I</b>	Back reef	2005	50	36	14	n.o
		2006	-	-	-	-
<b>Poudre D'Or Site II</b>	Back reef	2005	64	4	32	n.o
		2006	-	-	-	-
<b>Belle Mare (Site I)</b>	Back reef	2005	50	60	14	n.o
		2006	60	23	17	n.o
<b>Belle Mare (Site II)</b>	Back reef	2005	64	4	32	n.o
		2006	70	11	19	n.o

Source : Albion Fisheries Research Centre, Ministry of Agro Industry and Fisheries

<sup>1</sup> Rocks, sand, dead corals etc. <sup>2</sup> Sponges, crown of thorns (starfish), sea urchins etc ; n.o: Not observed

**Table 2.17 - List of Marine Protected Areas, 2007**

Hectares	
<b>Marine protected areas</b>	<b>Area</b>
<b>Marine parks</b>	<b>838</b>
Blue bay	353
Balaclava	485
<b>Fishing reserves</b>	<b>6,352</b>
Port Louis	331
Poudre d'Or	2,542
Poste La Fayette	280
Trou d'Eau Douce	574
Grand Port zone A	1,716
Grand Port zone B	112
Black River	797
<b>Wetland</b>	<b>26</b>
Rivulet Terre Rouge Estuary Bird Sanctuary	26
Total	7,216

Source : Albion Fisheries Research Centre, Ministry of Agro Industry and Fisheries