

PART II

ROAD ACCIDENTS

Table 2.1 - Road traffic accidents¹ and casualties, 1998 - 2007

	1998	1999	2000	2001	2002	2003	2004	2005	2006	2007
1. Road traffic accidents :										
Number	18,055	17,877	18,278	18,517	18,022	19,178	19,495	22,554	20,242	20,519
Rate per 100,000 population	1,605	1,569	1,588	1,591	1,535	1,616	1,629	1,869	1,665	1,678
Rate per 1,000 registered motor vehicles	84	79	77	75	69	72	69	76	65	63
2. Motor vehicle involved :										
Number	32,568	32,547	33,537	33,988	33,119	35,239	35,506	43,741	40,023	41,178
Rate per 1,000 registered motor vehicles	152	144	142	137	127	133	126	148	129	127
3. Casualties :										
Total number of casualties of which	3,828	3,405	3,291	3,264	2,904	2,698	2,951	2,760	2,522	3,055
<i>Fatal</i> ²	162	170	163	126	158	131	144	136	134	140
<i>Seriously injured</i>	281	237	266	288	216	291	245	358	348	500
<i>Slightly injured</i>	3,385	2,998	2,862	2,850	2,530	2,276	2,562	2,266	2,040	2,415
4. Fatality :										
Rate per 100,000 population	14.4	14.9	14.2	10.8	13.5	11.0	12.0	11.3	11.0	11.4
Rate per 1,000 registered motor vehicles	0.8	0.8	0.7	0.5	0.6	0.5	0.5	0.4	0.4	0.4
Fatality index ³	4.2	5.0	5.0	3.9	5.4	4.8	4.9	4.9	5.3	4.6

¹ Exclude accidents involving bicycles only or bicycle and pedestrian.

² From 1993 to 2001 figures are based on definition of fatal accidents where death occurred within 7 days.

As from 2002, figures are based on definition of fatal accidents where deaths occurred within 30 days as a result of road accidents.

³ Fatality index is the number of fatalities per 100 casualties.

Figure 2.1 - Number of vehicles registered and road accidents, 1998 -2007

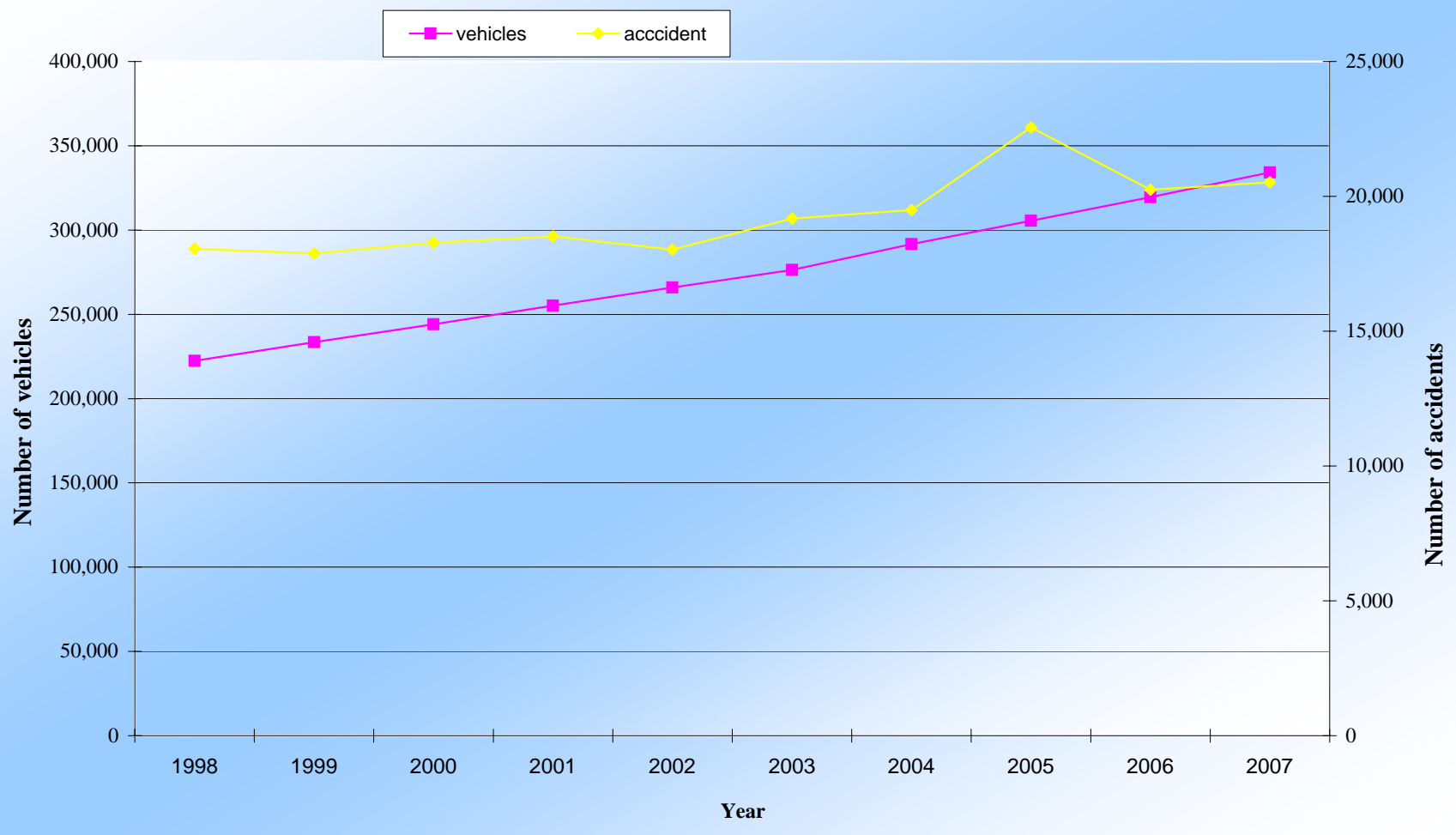


Table 2.2 - Road traffic accidents, motor-vehicles involved and casualties, 2003 - 2007

Year	Accidents	Casualty accidents	Non-injury accidents	Casualties	Motor Vehicles involved	Population (mid-year)	Motor vehicles registered (mid-year)
2003	19,178	2,061	17,117	2,698	35,239	1,186,363	270,450
2004	19,495	2,160	17,335	2,951	35,506	1,196,696	281,930
2005	22,554	2,144	20,410	2,760	43,741	1,206,346	296,219
2006	20,242	1,947	18,295	2,522	40,023	1,215,619	310,482
2007	20,519	2,190	18,329	3,055	41,355	1,223,089	324,715

Table 2.3 - Number of casualty accidents by degree of casualty and casualty rate, 2003- 2007

Year	Degree of casualty				Casualty rate		
	Fatal	Seriously injured	Slightly injured	Total casualties	Per casualty accident	Per 100,000 population	Per 1,000 Motor-vehicles
2003	131	291	2,276	2,698	1.3	227	10
2004	144	245	2,562	2,951	1.4	247	10
2005	136	358	2,266	2,760	1.3	229	9
2006	134	348	2,040	2,522	1.3	207	8
2007	140	500	2,415	3,055	1.4	250	9

Table 2.4 - Casualty accidents, pedestrian and rider (auto/motor) casualties by police district, 2006 - 2007

Police District	Casualty accidents		Casualties							
			Pedestrian		Rider (auto/moto cycle)		Other		Total	
	2006	2007	2006	2007	2006	2007	2006	2007	2006	2007
Port Louis (South)	156	177	47	50	77	103	76	72	200	225
Port Louis (North)	321	331	76	97	102	206	206	137	384	440
Pamplemousses/Rivière du Rempart	271	311	57	67	217	165	83	215	357	447
Moka/Flacq	368	407	107	102	178	188	188	296	473	586
Grand Port/Savanne	219	288	55	83	52	106	247	251	354	440
Upper Plaines Wilhems	200	254	81	80	85	86	69	185	235	351
Plaines Wilhems/Black River	412	422	143	129	130	165	246	272	519	566
Whole Island	1,947	2,190	566	608	841	1,019	1,115	1,428	2,522	3,055

Table 2.5 - Pedestrian and total casualties by police district and semester, 2007

Police district	Pedestrian casualties			Total casualties		
	Jan - Jun	Jul - Dec	Total	Jan - Jun	Jul - Dec	Total
Port Louis (South)	21	29	50	106	119	225
Port Louis (North)	49	48	97	232	208	440
Pamplemousses/Rivière du Rempart	35	32	67	232	215	447
Moka/Flacq	53	49	102	288	298	586
Grand Port/Savanne	41	42	83	205	235	440
Upper Plaines Wilhems	44	36	80	169	182	351
Plaines Wilhems/Black River	68	61	129	312	254	566
Whole Island	311	297	608	1,544	1,511	3,055

Table 2.6 - Distribution of casualty accidents by day of week and time, 2007

Day Time (Hour)	Monday	Tuesday	Wednesday	Thursday	Friday	Saturday	Sunday	Total
0 - 1	10	6	3	5	1	9	5	39
1 - 2	6	5	2	2	-	2	6	23
2 - 3	1	3	3	1	7	1	3	19
3 - 4	4	1	-	-	3	2	4	14
4 - 5	5	2	1	4	2	1	4	19
5 - 6	6	6	2	5	4	4	4	31
6 - 7	6	12	5	11	8	8	9	59
7 - 8	14	19	20	25	18	29	13	138
8 - 9	13	15	21	16	18	9	13	105
9 - 10	16	16	14	7	8	11	12	84
10 - 11	27	13	28	13	14	17	10	122
11 - 12	15	20	16	16	9	22	19	117
12 - 13	16	22	11	11	11	16	24	111
13 - 14	16	18	19	12	16	12	12	105
14 - 15	24	19	13	24	18	15	16	129
15 - 16	21	24	27	23	27	23	15	160
16 - 17	20	24	14	18	28	25	21	150
17 - 18	21	16	19	24	23	18	14	135
18 - 19	38	25	18	14	16	16	30	157
19 - 20	22	26	19	16	11	10	17	121
20 - 21	21	20	18	11	9	21	15	115
21 - 22	16	13	10	12	13	16	18	98
22 - 23	16	9	12	5	8	12	9	71
23 - 24	13	10	9	8	2	11	15	68
Total	367	344	304	283	274	310	308	2,190

Fig. 2.2 - Number of casualty accidents by day of week, 2007

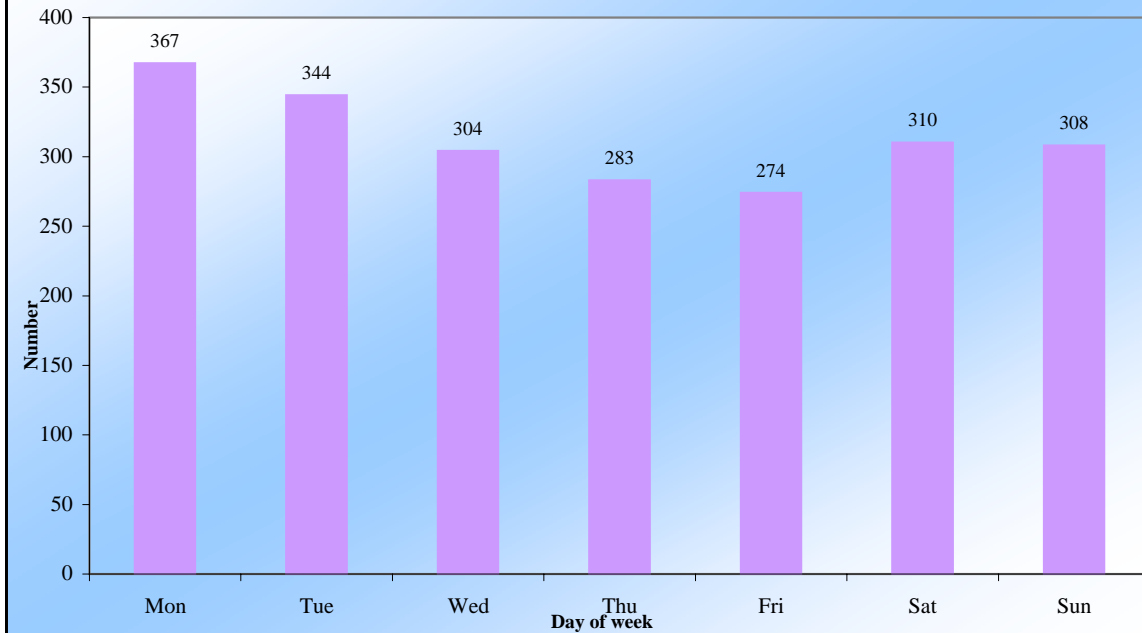


Fig. 2.3 - Number of casualty accidents by time of day, 2007

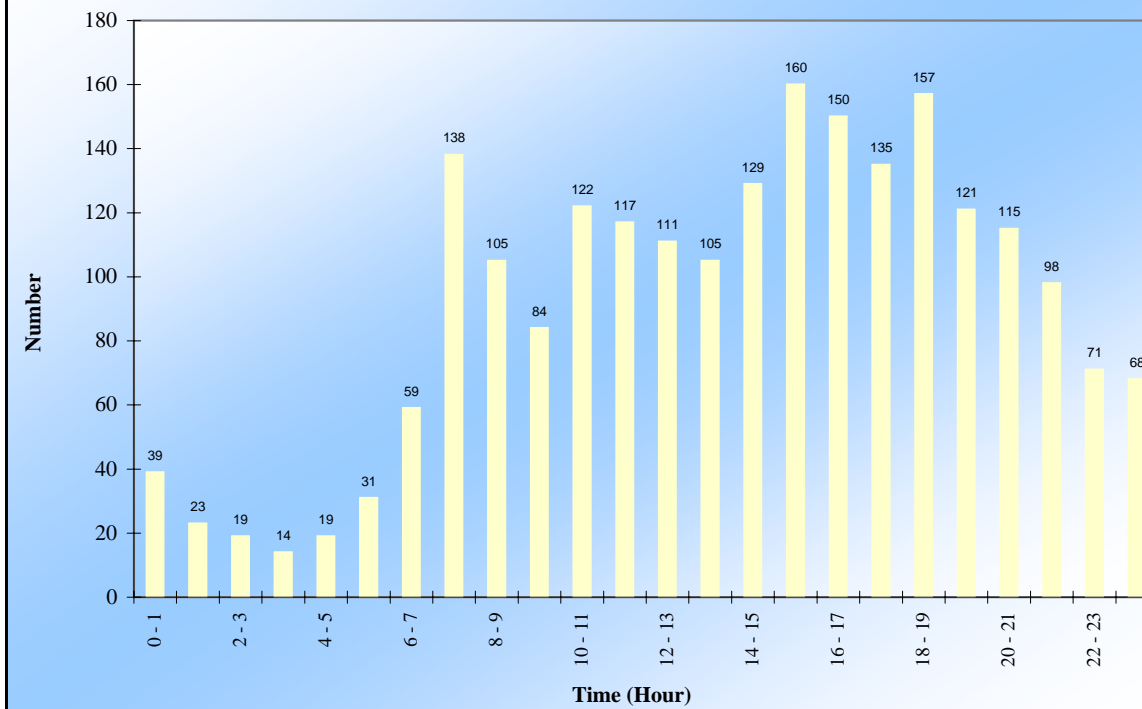


Table 2.7 - Number of accidents by severity of accident, 2003 - 2007

Year	Severity of accident				
	Fatal ¹	Serious	Slight	No injury	Total
2003	121	211	1,729	17,117	19,178
2004	131	184	1,845	17,335	19,495
2005	116	295	1,733	20,410	22,554
2006	122	296	1,529	18,295	20,242
2007	133	403	1,654	18,329	20,519

¹ prior to 2002, a fatal accident was defined as an accident where deaths occurred within 7 days. As from 2002, a fatal accident is defined as an accident where deaths occurred within 30 days.

Table 2.8 - Number of casualty accidents involved in "hit and run" cases by semester, 2006- 2007

Year Accident	2006				2007			
	Jan. - Jun.	Jul. - Dec.	Total	%	Jan. - Jun.	Jul. - Dec.	Total	%
Vehicles v/s pedestrian	27	30	57	44.9	23	28	51	39.8
Vehicles v/s vehicles	32	38	70	55.1	40	37	77	60.2
Total	59	68	127	100.0	63	65	128	100.0

Table 2.9 - Number of accidents by severity of accident and police district, 2006 - 2007

Police district	2006					2007				
	Severity of accident					Severity of accident				
	Fatal	Serious	Slight	No injury ¹	Total	Fatal	Serious	Slight	No injury ¹	Total
Port Louis (South)	15	15	126	...	156	14	27	136	...	177
Port Louis (North)	14	57	250	...	321	21	56	254	...	331
Pamplemousses /Riviere-Du-Rempart	20	66	185	...	271	28	76	207	...	311
Moka/Flacq	23	43	302	...	368	21	56	330	...	407
Grand-Port/Savanne	12	29	178	...	219	15	36	237	...	288
Upper Plaine -Wilhems	14	38	148	...	200	10	76	168	...	254
Plaine - Wilhems/Black- River	24	48	340	...	412	24	76	322	...	422
Not specified	-	-	-	18,295	18,295	-	-	-	18,329	18,329
Total	122	296	1,529	18,295	20,242	133	403	1,654	18,329	20,519

¹ as from August 2004, most non-injury road traffic accidents are not reported to the police, but only to insurance companies. Consequently, disaggregated data on non-injury accidents by police districts are not available.

Table 2.10 - Number of accidents by severity of accident and weather conditions, 2006 - 2007

Weather conditions	2006					2007				
	Severity of accident					Severity of accident				
	Fatal	Serious	Slight	No injury ¹	Total	Fatal	Serious	Slight	No injury ¹	Total
Fine	119	287	1,512	...	1,918	123	373	1,522	...	2,018
Rainy	3	9	17	...	29	10	28	130	...	168
Foggy/misty	-	-	-	...	-	-	2	2	...	4
Other	-	-	-	...	-	-	-	-	...	-
Not specified	-	-	-	18,295	18,295	-	-	-	18,329	18,329
Total	122	296	1,529	18,295	20,242	133	403	1,654	18,329	20,519

¹ as from August 2004, most non-injury road traffic accidents are not reported to the police, but only to insurance companies. Consequently, disaggregated data on non-injury accidents by weather conditions are not available.

Table 2.11 - Number of accidents by severity of accident and light conditions, 2006 - 2007

Light conditions	2006					2007				
	Severity of accident					Severity of accident				
	Fatal	Serious	Slight	No injury ¹	Total	Fatal	Serious	Slight	No injury ¹	Total
Day light	67	220	1,127	...	1,414	73	264	1,134	...	1,471
Dark - no street lighting	4	2	7	...	13	17	34	84	...	135
Dark - street lighting on	49	74	392	...	515	37	95	414	...	546
Dark -street lighting off	2	-	3	...	5	6	9	22	...	37
Not specified	-	-	-	18,295	18,295	-	1	-	18,329	18,330
Total	122	296	1,529	18,295	20,242	133	403	1,654	18,329	20,519

¹ as from August 2004, most non-injury road traffic accidents are not reported to the police, but only to insurance companies. Consequently, disaggregated data on non-injury accidents by light conditions are not available.

Table 2.12 - Number of casualty accidents by severity of accident, type of road and collision type, 2007

Collision type	Type of road									Total
	Fatal			Serious			Slight			
	One Way St	Two Way St	Dual Carriage way	One Way St	Two Way St	Dual Carriage way	One Way St	Two Way St	Dual Carriage way	
Head On	-	30	-	2	63	1	3	252	3	354
Rear End	-	8	3	3	43	4	14	174	45	294
Right Angle	1	7	-	6	45	2	17	195	19	292
Side Swipe	-	4	-	-	16	6	13	96	21	156
Ran Off Road	1	3	-	-	12	2	1	70	9	98
Hit Object in Road	-	3	-	-	1	-	-	12	1	17
Hit Object off Road	1	17	2	1	32	2	5	92	16	168
Hit Parked Vehicle	-	1	-	-	7	-	3	28	5	44
Hit Pedestrian	3	35	5	8	109	7	39	355	13	574
Hit Animal	-	-	-	-	9	1	2	37	1	50
Other	-	9	-	1	19	1	9	94	10	143
Total	6	117	10	21	356	26	106	1,405	143	2,190

Table 2.13 - Number of accidents by severity of accident and type of road, 2006 - 2007

Type of road	2006						2007					
	Length of roads (kms)	Severity of accident					Length of roads (kms)	Severity of accident				
		Fatal	Serious	Slight	No injury ¹	Total		Fatal	Serious	Slight	No injury ¹	Total
Motor-way	75	20	7	104	...	131	75	5	15	61	...	81
Main road	955	43	90	518	...	651	962	63	191	784	...	1,038
Secondary road	593	37	101	437	...	575	593	39	118	484	...	641
Other road	398	22	98	470	...	590	398	26	79	325	...	430
Not specified	-	-	-	-	18,295	18,295	-	-	-	-	18,329	18,329
Total	2,021	122	296	1,529	18,295	20,242	2,028	133	403	1,654	18,329	20,519

¹ as from August 2004, most non-injury road traffic accidents are not reported to the police, but only to insurance companies. Consequently, disaggregated data on non-injury accidents by types of road are not available.

Table 2.14 - Number of casualty accidents by degree of casualties and junction type, 2007

Junction type	2007			
	Degree of casualties			
	Fatal	Serious	Slight	Total
Not a Junction	111	294	1,142	1,547
Crossroads	4	45	198	247
T - Junction	13	49	233	295
Staggered - Junction	-	1	9	10
Y - Junction	2	1	14	17
Roundabout	3	13	57	73
Slip Road	-	-	-	--
Private Entrance	-	-	1	1
Total	133	403	1,654	2,190

Table 2.15 - Number of vehicles¹ involved in casualty accidents by type, 2006 - 2007

Type of vehicle	2006		2007	
	Number of vehicles	%	Number of vehicles	%
Private car	1,048	34.9	1,153	34.0
Taxi car	93	3.1	100	3.0
Bus	196	6.5	271	8.0
Lorry	100	3.3	121	3.6
Van	373	12.4	418	12.3
Motor/Auto cycle	983	32.7	1,140	33.6
Pedal cycle	182	6.1	177	5.2
Other motor vehicle	32	1.1	9	0.3
Other non-motor vehicle	0	0.0	0	0.0
All vehicles	3,007	100.0	3,389	100.0

¹ only three main vehicles have been considered in accidents involving more than three vehicles.

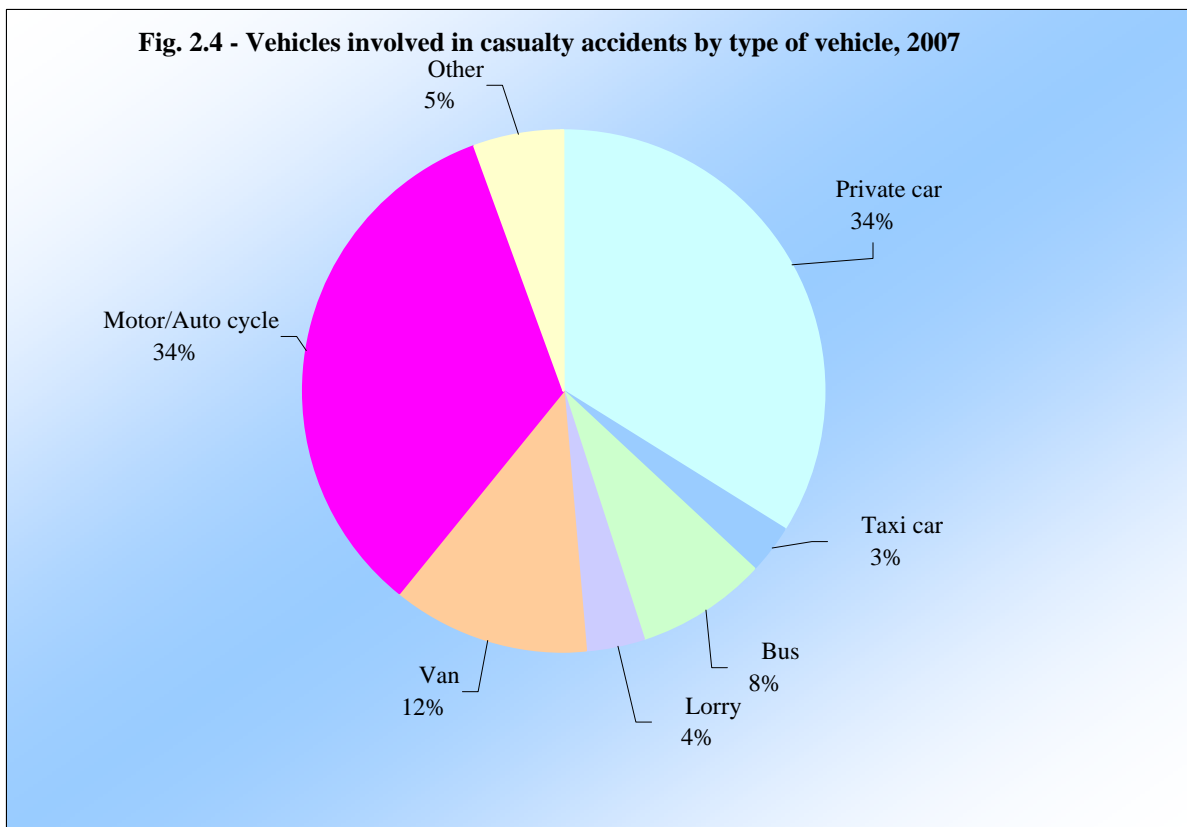


Table 2.16 - Number of motor-vehicles¹ involved in casualty accidents by type of vehicle and nature of damage, 2007

Type of vehicle	2007			
	Seriously damaged	Slightly damaged	No damaged	Total
Private car	193	714	127	1,034
Taxi car	12	79	9	100
Bus	23	165	86	274
Lorry	13	63	45	121
Van	72	292	54	418
Motor/Auto cycle	316	764	47	1,127
Other motor-vehicle	-	4	5	9
All vehicles	629	2,081	373	3,083

¹ only three main vehicles have been considered in accidents involving more than three vehicles.

Note: as from August 2004, most non-injury road traffic accidents are not reported to the police, but only to insurance companies. Consequently, disaggregated data on non-injury accidents by type of vehicle and nature of damage are not available .

Table 2.17 - Number of drivers and riders¹ involved in casualty accidents by age-group and sex, 2007

Age - group (years)	Drivers			Riders			Total		
	Male	Female	Total	Male	Female	Total	Male	Female	Total
15 - 18	4	-	4	27	-	27	31	0	31
19 - 24	14	2	16	200	1	201	214	3	217
25 - 34	152	12	164	130	3	133	282	15	297
35 - 44	114	11	125	86	-	86	200	11	211
45 - 54	49	6	55	41	-	41	90	6	96
55 - 60	17	1	18	16	-	16	33	1	34
Over 60	3	3	6	3	-	3	6	3	9
All ages	353	35	388	503	4	507	856	39	895

¹ excluding drivers and riders involved in hit and run and mutual agreement cases.

Note: as from August 2004, most non-injury road traffic accidents are not reported to the police, but only to insurance companies. Consequently, disaggregated data on non-injury accidents by age group and sex are not available.

Table 2.18 - Number of drivers/riders¹ involved in casualty accidents by driving experience and sex, 2007

Driving experience	2007		
	Number of drivers/riders		
	Male	Female	Total
No licence	36	-	36
Learner driver's licence	732	11	743
Full licence	2,203	102	2,305
All categories	2,971	113	3,084

¹ excluding drivers and riders involved in hit and run and mutual agreement cases

Note: as from August 2004, most non-injury road traffic accidents are not reported to the police, but only to insurance companies. Consequently, disaggregated data on non-injury accidents by driving experience and sex are not available .

Table 2.19 - Number of casualties by class of road users, 2006 - 2007

Class of Road users	2006		2007	
	Number	%	Number	%
Pedestrian	566	22.4	608	19.9
Passenger	618	24.5	834	27.3
Driver	327	13.0	430	14.1
Rider (auto/motor cycle)	841	33.3	1,010	33.1
Pedal cyclist	170	6.7	173	5.7
All road users	2,522	100.0	3,055	100.0

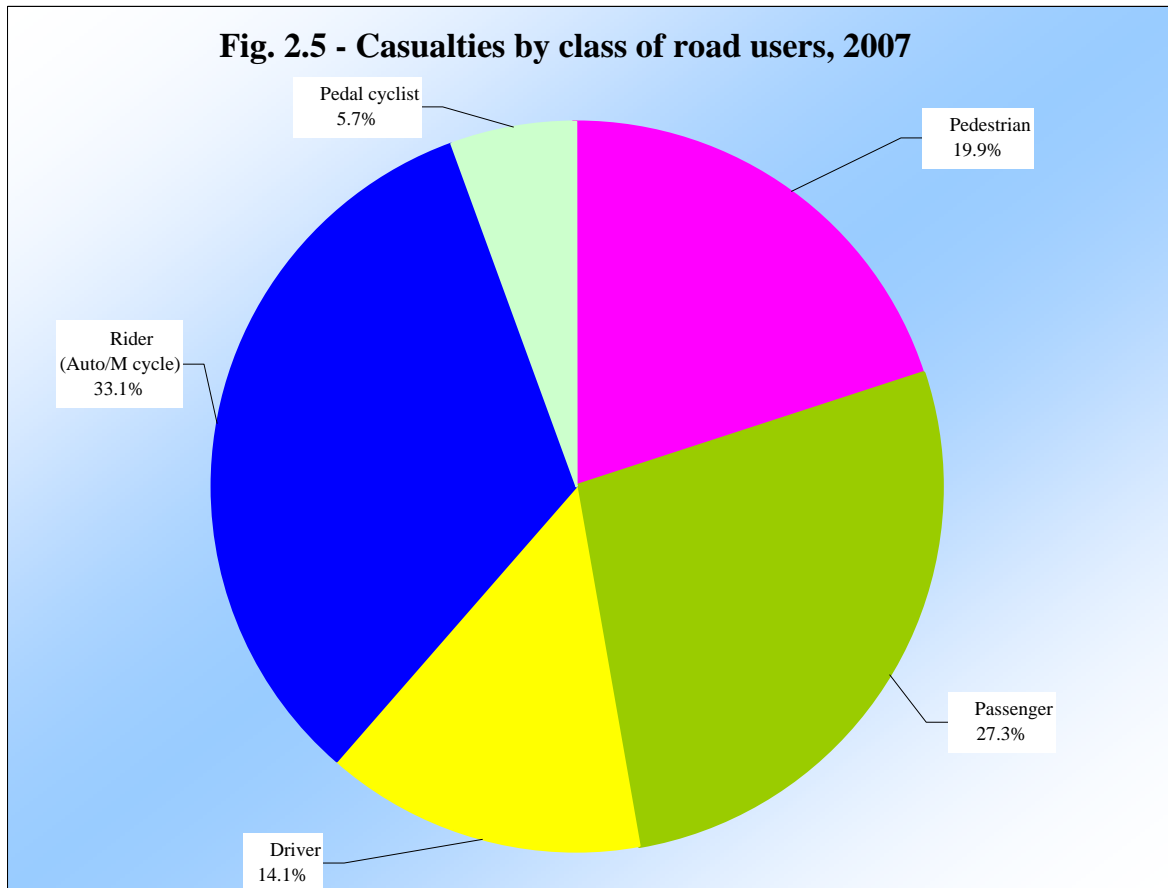


Table 2.20 - Number of casualties by degree of casualty and class of road users, 2006 - 2007

Class of Road users	2006					2007				
	Degree of casualty					Degree of casualty				
	Fatal	Seriously injured	Slightly injured	Total	%	Fatal	Seriously injured	Slightly injured	Total	%
Pedestrian	49	85	432	566	22.4	41	126	441	608	19.9
Passenger	20	61	537	618	24.5	23	125	686	834	27.3
Driver	14	38	275	327	13.0	16	57	357	430	14.1
Rider (auto / m - cycle)	36	133	672	841	33.3	47	165	798	1,010	33.1
Pedal cyclist	15	31	124	170	6.7	13	27	133	173	5.7
All road users	134	348	2,040	2,522	100.0	140	500	2,415	3,055	100.0

Table 2.21 - Number of casualties by class of road users, age-group and sex, 2007

Age-group (years)	Road Users											
	Pedestrian			Passenger			Driver/Rider/Cyclist			Total Casualties		
	Male	Female	Total	Male	Female	Total	Male	Female	Total	Male	Female	Total
Under 7	21	18	39	17	20	37	3	-	3	41	38	79
7 - 12	42	24	66	22	21	43	6	1	7	70	46	116
13 - 20	33	39	72	69	49	118	116	2	118	218	90	308
21 - 40	125	84	209	292	169	461	992	21	1,013	1,409	274	1,683
41 - 50	58	29	87	39	62	101	235	9	244	332	100	432
51 - 60	24	21	45	17	25	42	166	1	167	207	47	254
Over 60	51	39	90	17	15	32	58	3	61	126	57	183
All ages	354	254	608	473	361	834	1,576	37	1,613	2,403	652	3,055

Table 2.22 - Number of pedestrian casualties by age-group, 2006 - 2007

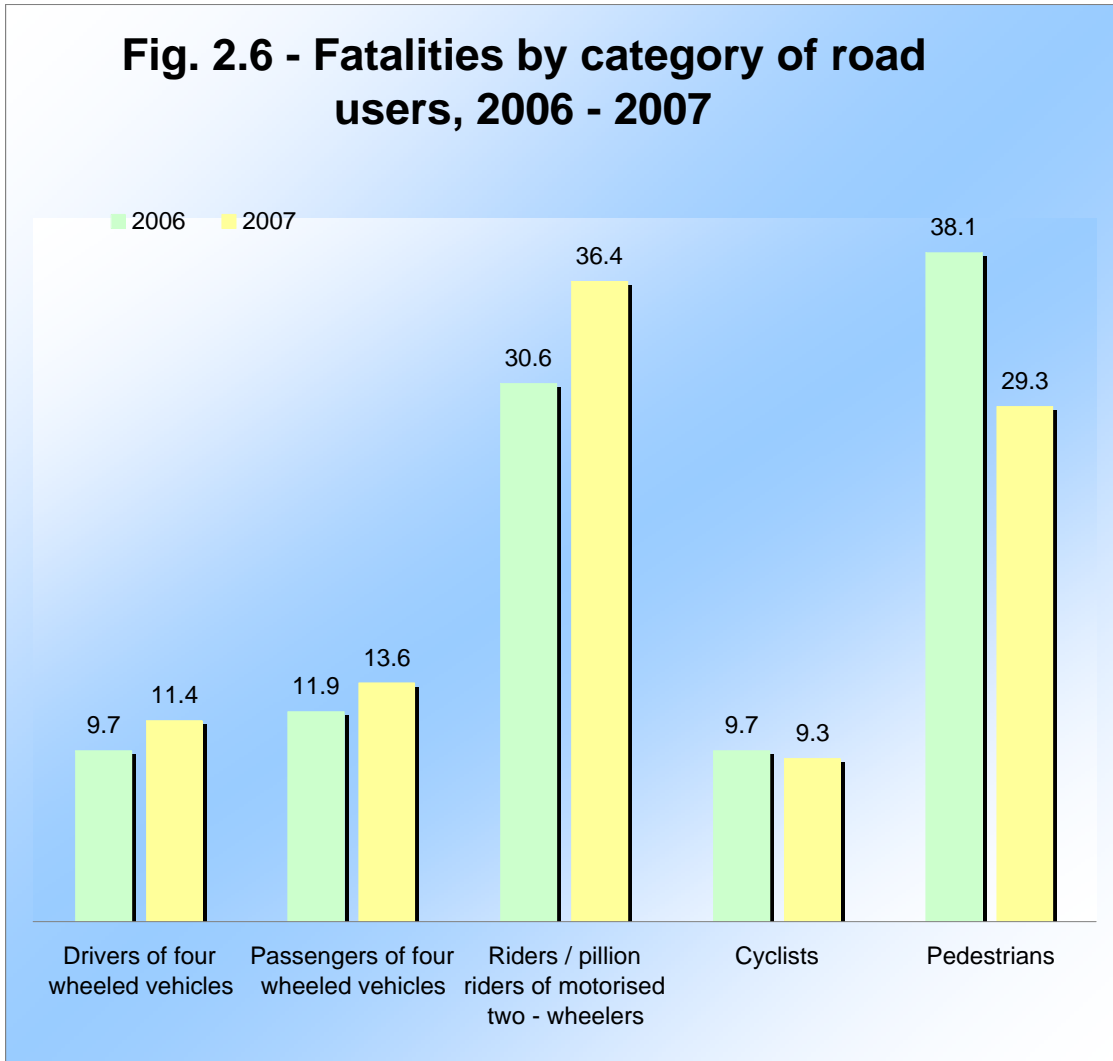
Age-group (years)	2006			2007		
	Population (mid year)	Pedestrian casualties		Population (mid year)	Pedestrian casualties	
		Number	Per 100,000 population		Number	Per 100,000 population
Under 7	128,440	24	19	125,548	39	31
7 - 12	116,750	60	51	115,146	66	57
13 - 20	157,890	55	35	160,945	72	45
21 - 40	392,789	226	58	387,936	209	54
41 - 50	184,149	68	37	187,788	87	46
51 - 60	125,277	55	44	132,573	45	34
Over 60	110,324	78	71	113,153	90	80
All ages	1,215,619	566	47	1,223,089	608	50

Table 2.23 - Number of fatalities by class of road users, age-group and sex, 2007

Age-group (years)	Road Users											
	Pedestrian			Passenger			Driver/Rider/Cyclist			Total Casualties		
	Male	Female	Total	Male	Female	Total	Male	Female	Total	Male	Female	Total
Under 7	2	1	3	1	2	3	-	-	-	3	3	6
7 - 12	4	-	4	-	1	1	-	-	-	4	1	5
13 - 20	-	1	1	-	1	1	3	-	3	3	2	5
21 - 40	6	-	6	8	3	11	47	-	47	61	3	64
41 - 50	8	1	9	2	1	3	12	-	12	22	2	24
51 - 60	4	1	5	1	2	3	7	-	7	12	3	15
Over 60	8	5	13	1	-	1	7	-	7	16	5	21
All ages	32	9	41	13	10	23	76	-	76	121	19	140

Table 2.24 - Fatalities by category of road users, 2006 - 2007

Category of road users	Fatalities			
	2006		2007	
	Number	%	Number	%
Drivers of four wheeled vehicles	13	9.7	16	11.4
Passengers of four wheeled vehicles	16	11.9	19	13.6
Riders / pillion riders of motorised two - wheelers	41	30.6	51	36.4
Cyclists	13	9.7	13	9.3
Pedestrians	51	38.1	41	29.3
All road users	134	100.0	140	100.0



Tab 2.25 - Number of fatalities by Police district and class of road users, 2006 - 2007

Police district	2006						2007					
	Class of road users						Class of road users					
	Pedestrian	Passengers	Drivers	Riders	Pedal Cyclist	All Road Users	Pedestrian	Passengers	Drivers	Riders	Pedal Cyclist	All Road Users
Port Louis (South)	3	1	1	3	2	10	6	2	1	5	-	14
Port Louis (North)	3	-	1	2	1	7	7	1	2	8	4	22
Pamplemousses/Riviere Du Rempart	8	6	5	11	4	34	6	7	4	12	2	31
Moka/Flacq	12	1	2	8	3	26	5	1	2	10	3	21
Grand-Port/Savanne	5	4	1	3	1	14	4	6	4	4	3	21
Upper Plaine -Wilhems	9	4	2	5	1	21	2	1	1	2	-	6
Plaine -Wilhems/Black-River	9	4	2	4	3	22	11	5	2	6	1	25
Total	49	20	14	36	15	134	41	23	16	47	13	140