



Republic of Mauritius

**Ministry of Finance and Economic Empowerment
Central Statistics Office**

**Digest of International Travel
and Tourism Statistics
2007**

September 2008

(Price: Rs 75.00)

INTERNATIONAL TRAVEL AND TOURISM STATISTICS

Vol. 34

2007

" International Travel and Tourism Statistics" is a regular publication of the Central Statistics Office, designed to present in a single report, detailed statistics concerning international travel and tourism relating to Mauritius.

The statistical tables presented in this report have been compiled from the embarkation/disembarkation cards filled in by passengers as they leave or enter the country in the course of their travel.

Statistical data on International Travel and Tourism are constantly updated as more reliable information become available, necessitating minor changes over previous issues of this publication. The figures published in this issue therefore supersede those of all previous issues.

It is hoped that the data herewith assembled will prove useful to the public in general and to policy makers, planners and research workers in particular.

The publication of this report has been made possible with the collaboration of the Passport and Immigration Office and the Ministry of Tourism, Leisure and External Communications. Their co-operation is herewith gratefully acknowledged.

H. Bundhoo

Director of Statistics

Central Statistics Office
Ministry of Finance and Economic Empowerment
PORT LOUIS
MAURITIUS
September 2008

CONTENTS

Table	Page
I - POPULATION AND VITAL STATISTICS	
1 - Estimated resident population of Rep. of Mauritius as at 31st December, 2006 & 2007	5
2 - Population growth in intercensal periods - Island of Mauritius, 1851 - 2000	5
3 - Population growth in intercensal periods - Island of Rodrigues, 1851 - 2000	6
4 - Estimated resident population by geographical district and sex - Republic of Mauritius, 2006 & 2007 (End of year estimates)	7
5 - Population and vital statistics - Republic of Mauritius, 1972 - 2007	8
6 - Growth of the resident population and vital statistics - Island of Mauritius, 1998 - 2007	9
7 - Growth of the resident population and vital statistics - Island of Rodrigues, 1998 - 2007	10
II - PASSENGER TRAFFIC	
8 - Passenger traffic by sex, 1987 - 2007	11
9 - Passenger traffic between Islands of Mauritius and Rodrigues, 1987 - 2007	12
10 - Passenger traffic by mode of transport, 1987 - 2007	16
11 - Passenger traffic by month, 2004 - 2007	17
12 - Arrivals by country of original embarkation, 2002 - 2007	18
13 - Departures by country of final destination, 2002 - 2007	19
14 - Monthly passenger traffic by type of passenger, 2007	20
15 - Passenger traffic by type of passenger, 1998 - 2007	21
16 - Total arrivals by age and sex, 2006 & 2007	22
17 - Total departures by age and sex, 2006 & 2007	23
18 - Excess of arrivals over departures by age and sex, 2006 & 2007	24
19 - Arrivals of Mauritian residents by age and sex, 2006 & 2007	25
20 - Departures of Mauritian residents by age and sex, 2006 & 2007	26
21 - Excess of arrivals over departures of Mauritian residents by age and sex, 2006 & 2007	27
22 - Arrivals and departures of Mauritian residents by country of embarkation and disembarkation, 2005 - 2007	28

CONTENTS

Table		Page
	III - TOURISM	
	Definition and notes	29
23 -	Tourist arrivals by mode of transport and tourist nights spent during period, 1991-2007	31
24 -	Tourist arrivals by month of arrival, 1998 - 2007	32
25 -	Percentage distribution of tourist arrivals by month of arrival, 1998 - 2007	34
26 -	Tourist arrivals by country of residence and sex, 2007	35
27 -	Tourist arrivals by country of residence, 1998 - 2007	36
28 -	Percentage distribution of tourist arrivals by country of residence, 1998 - 2007	37
29 -	Tourist nights by country of residence, 1998 - 2007	39
30 -	Visitor arrivals by country of residence and type of passenger, 2005 - 2007	42
31 -	Visitor arrivals by age and sex, 2006 & 2007	43
32 -	Visitor arrivals by duration of stay, 2006 & 2007	44
33 -	Visitor arrivals by country of residence and duration of stay, 2007	45
34 -	Visitor arrivals and average length of stay by country of residence, 2007	46
35 -	Gross earnings from tourism, 1998 - 2007	47
36 -	Expenditure of tourists by country of residence, 1998 - 2006	47
37 -	Expenditure of tourists by type of expenditure, 1998 - 2006	48
38 -	Hotels, rooms and bedplaces, 1998 - 2007	49
39 -	Monthly occupancy rates in large hotels, 2003 - 2007	50
40 -	Monthly occupancy rates in all hotels, 2003 - 2007	51

CONTENTS

Page

ILLUSTRATIONS

Fig. 1	- Passenger Traffic: Total arrivals by sex, 1991 - 2007	13
2	- Passenger Traffic: Total departures by sex, 1991 - 2007	14
3	- Passenger Traffic: Total arrivals and total departures, 1998 - 2007	15
4	- Tourist arrivals by month, 2003 - 2007	33
5	- Percentage distribution of tourist arrivals by country of residence, 2007	38
6	- Total arrivals and tourist arrivals, 1998 - 2007	40
7	- Tourist nights, 1998 - 2007	41

The following symbol is used throughout :-

" - " for Nil

Appendix 1 : International Disembarkation Card

Appendix 2 : Embarkation Card

Contact persons:

Mr A. Bundhoo, Statistician or
Mr M. Lan Pin Wing, Senior Statistical Officer
Ministry of Tourism, Leisure &
External Communications
3rd Floor, Victoria House
Port Louis
Tel: 211-9042
Fax: 210-3901
Email: cso@mail.gov.mu

I - POPULATION AND VITAL STATISTICS

**Table 1 - Estimated resident population of Republic of Mauritius
as at 31st December, 2006 & 2007 ¹**

Year	Island	Both sexes	Male	Female	Area (sq km)	Density (persons/km ²)
2006	Mauritius	1,219,208	602,688	616,520	1,864.8	654
	Rodrigues	37,230	18,423	18,807	104.0	358
	Other	289	193	96	71.2	4
	Republic of Mauritius	1,256,727	621,304	635,423	2,040.0	616
2007	Mauritius	1,227,075	606,307	620,768	1,864.8	658
	Rodrigues	37,499	18,530	18,969	104.0	361
	Other	289	193	96	71.2	4
	Republic of Mauritius	1,264,863	625,030	639,833	2,040.0	620

¹ based on the 2000 population census data adjusted for underenumeration of young children.

Table2 - Population growth in intercensal periods - Island of Mauritius, 1851 - 2000

Census Date	Population enumerated at census			Intercensal increase	Average annual rate of increase(%)
	Both sexes	Male	Female		
20 Nov. 1851	180,823	119,341	61,482	22,361	2.55
8 Apr. 1861	310,050	202,961	107,089	129,227	5.91
11 Apr. 1871	316,042	193,575	122,467	5,992	0.19
4 Apr. 1881	359,874	208,655	151,219	43,832	1.31
6 Mar. 1891	370,588	206,038	164,550	10,714	0.29
1 Apr. 1901	371,023	199,552	171,471	435	0.01
31 Mar. 1911	368,791	194,095	174,696	-2,232	-0.06
21 May. 1921	376,485	194,108	182,377	7,694	0.21
26 Apr. 1931	393,238	200,609	192,629	16,753	0.44
11 Jun. 1944	419,185	210,326	208,859	25,947	0.49
29 Jun. 1952	501,415	252,032	249,383	82,230	2.26
30 Jun. 1962 ¹	681,619	342,306	339,313	180,204	3.12
30 Jun. 1972 ¹	826,199	413,580	412,619	144,580	1.94
2 Jul. 1983 ¹	966,863	481,368	485,495	140,664	1.44
1 Jul. 1990 ²	1,022,456	510,676	511,780	55,593	0.80
1 Jul. 2000 ²	1,143,069	566,056	577,013	120,613	1.12

¹ " De facto " population

² " De jure " population

**Table 3 - Population growth in intercensal periods - Island of Rodrigues,
1851 - 2000**

Census Date	Population enumerated at census			Inter-censal increase	Average annual rate of increase (%)
	Both sexes	Male	Female		
20 Nov. 1851	495	327	168	-	-
8 Apr. 1861	693	464	229	198	3.65
11 Apr. 1871	1,108	693	415	415	4.80
4 Apr. 1881	1,431	812	619	323	2.59
6 Mar. 1891	2,068	1,154	914	637	3.75
1 Apr. 1901	3,162	1,685	1,477	1,094	4.34
31 Mar. 1911	4,829	2,523	2,306	1,667	4.33
21 May. 1921	6,584	3,300	3,284	1,755	3.15
26 Apr. 1931	8,202	4,033	4,169	1,618	2.22
11 Jun. 1944	11,885	5,740	6,145	3,683	2.89
29 Jun. 1952	13,333	5,947	7,386	1,448	1.45
30 Jun. 1962	18,335	9,062	9,273	5,002	3.24
30 Jun. 1972 ¹	24,769	12,270	12,499	6,434	3.05
2 Jul. 1983 ¹	33,082	16,552	16,530	8,313	2.67
1 Jul. 1990 ²	34,204	17,084	17,120	1,122	0.48
1 Jul. 2000 ²	35,779	17,700	18,079	1,575	0.45

¹ " De facto " population

² " De jure " population

Table 4 - Estimated resident population by geographical district and sex - Republic of Mauritius, 2006 & 2007
(End of year estimates) ¹

Geographical district	Area (km ²)	31st December 2006			31st December 2007		
		Both sexes	Male	Female	Both sexes	Male	Female
Port Louis	42.7	130,189	64,512	65,677	129,945	64,323	65,622
Pamplemousses	178.7	133,315	65,902	67,413	134,726	66,601	68,125
Riviere du Rempart	147.6	106,360	52,715	53,645	107,243	53,118	54,125
Flacq	297.9	136,649	68,310	68,339	137,692	68,799	68,893
Grand Port	260.3	113,451	56,284	57,167	114,106	56,594	57,512
Savanne	244.8	69,729	34,582	35,147	70,020	34,749	35,271
Plaines Wilhems	203.3	378,499	185,215	193,284	380,463	186,087	194,376
Moka	230.5	79,953	39,521	40,432	80,398	39,716	40,682
Black River	259.0	71,063	35,647	35,416	72,482	36,320	36,162
Island of Mauritius	1,864.8	1,219,208	602,688	616,520	1,227,075	606,307	620,768
Island of Rodrigues	104.0	37,230	18,423	18,807	37,499	18,530	18,969
Other ²	71.2	289	193	96	289	193	96
Republic of Mauritius	2,040.0	1,256,727	621,304	635,423	1,264,863	625,030	639,833

¹ based on the 2000 population census data adjusted for underenumeration of young children. Internal migration within districts is assumed to be the same as the net annual internal migration during 1995 - 2000 (obtained from the 2000 census)

² includes Agalega and St Brandon.

Table 5 - Population and vital statistics - Republic of Mauritius, 1972 - 2007

Year	Population at mid-year ¹	Live births	Deaths	Infant deaths	Still births	Civil marriages ²	Divorces ³
1972	850,968	21,495	6,753	1,399	749	5,214	136
1973	869,334	20,015	6,779	1,277	701	5,679	147
1974	880,650	24,002	6,424	1,113	879	6,905	117
1975	892,045	22,557	7,201	1,130	932	7,069	110
1976	903,610	23,274	6,968	936	808	8,451	98
1977	918,005	23,859	7,154	1,087	742	8,632	197
1978	933,499	25,278	6,596	876	680	10,741	255
1979	949,888	26,163	6,871	891	668	9,327	265
1980	966,039	26,294	6,919	864	662	8,894	351
1981	980,462	24,967	6,653	884	590	8,406	305
1982	992,521	22,459	6,584	682	458	10,768	312
1983	1,001,691	21,073	6,532	570	403	10,255	361
1984	1,012,221	20,332	6,646	505	404	10,865	471
1985	1,020,528	19,376	6,906	487	383	11,245	460
1986	1,028,360	19,170	6,805	524	365	10,556	616
1987	1,036,082	20,033	6,753	504	363	11,392	842
1988	1,043,239	20,941	6,879	471	374	11,453	740
1989	1,051,260	21,822	7,149	498	415	11,197	711
1990	1,058,775	22,602	7,031	462	365	11,425	549
1991	1,070,266	22,197	7,027	413	400	11,295	707
1992	1,084,441	22,902	7,023	426	291	11,408	781
1993	1,097,374	22,329	7,433	438	337	11,576	762
1994	1,112,846	21,795	7,402	394	274	11,414	733
1995	1,122,457	20,549	7,465	404	299	10,624	801
1996	1,133,996	20,763	7,670	459	266	10,700	792
1997	1,148,284	20,012	7,986	406	257	10,887	891
1998	1,160,421	19,434	7,839	376	227	10,898	1,012
1999	1,175,267	20,311	7,944	396	226	11,295	1,150
2000	1,186,873	20,205	7,982	322	266	10,963	1,191
2001	1,199,881	19,696	7,983	282	244	10,635	1,512
2002	1,210,196	19,983	8,310	297	203	10,484	1,294
2003	1,222,811	19,343	8,520	250	220	10,812	1,190
2004	1,233,386	19,230	8,475	278	190	11,385	1,162
2005	1,243,253	18,820	8,646	248	185	11,294	1,133
2006	1,252,698	17,604	9,162	249	147	11,471	1,379
2007	1,260,403	17,034	8,498	261	172	11,547	1,302

¹ Figures for 1973 - 1982, 1984 - 1989 and 1991 - 1999 have been respectively revised in the light of the 1983, 1990 and 2000 population census data adjusted for underenumeration of young children.

² The increase in the number of civil marriages as from 1982 is due largely to improved registration of religious marriages with the coming into force of a new Civil Status Act as from January, 1982.

³ Source: Judicial Department

Table 6 - Growth of the resident population and vital statistics - Island of Mauritius, 1998 - 2007

Year	Population at beginning of year	Natural movement			Net migration	Total increase	% change during the year due to:			Population at end of year
		Live births	Deaths	Natural increase			Natural increase	Migration	Total	
1998	1,120,084	18,744	7,651	11,093	314	11,407	0.99	+0.03	1.02	1,131,491
1999	1,131,491	19,543	7,791	11,752	1,478	13,230	1.04	+0.13	1.17	1,144,721
2000	1,144,721	19,398	7,806	11,592	977	12,569	1.01	+0.09	1.10	1,157,290
2001	1,157,290	18,884	7,761	11,123	890	12,013	0.96	+0.08	1.04	1,169,303
2002	1,169,303	19,169	8,081	11,088	-202	10,886	0.95	-0.02	0.93	1,180,189
2003	1,180,189	18,518	8,310	10,208	939	11,147	0.86	+0.08	0.94	1,191,336
2004	1,191,336	18,285	8,259	10,026	-362	9,664	0.84	-0.03	0.81	1,201,000
2005	1,201,000	17,924	8,422	9,502	800	10,302	0.79	+0.07	0.86	1,211,302
2006	1,211,302	16,723	8,917	7,806	100	7,906	0.64	+0.01	0.65	1,219,208
2007	1,219,208	16,190	8,323	7,867	0	7,867	0.65	+0.00	0.65	1,227,075

Table 7 - Growth of the resident population and vital statistics - Island of Rodrigues, 1998 - 2007

Year	Population at beginning of year	Natural movement			Net migration	Total increase	% change during the year due to:			Population at end of year
		Live births	Deaths	Natural increase			Natural increase	Migration	Total	
1998	35,260	690	188	502	-351	151	1.42	-1.00	0.42	35,411
1999	35,411	768	153	615	-386	229	1.74	-1.09	0.65	35,640
2000	35,640	807	176	631	-386	245	1.77	-1.08	0.69	35,885
2001	35,885	812	222	590	-390	200	1.64	-1.09	0.55	36,085
2002	36,085	814	229	585	-367	218	1.62	-1.02	0.60	36,303
2003	36,303	825	210	615	-415	200	1.69	-1.14	0.55	36,503
2004	36,503	945	216	729	-460	269	2.00	-1.26	0.74	36,772
2005	36,772	896	224	672	-450	222	1.83	-1.22	0.61	36,994
2006	36,994	881	245	636	-50	586	1.72	-0.14	1.58	37,580
2007	37,230	844	175	669	-400	269	1.80	-1.07	0.73	37,499

II - PASSENGER TRAFFIC

Table 8 - Passenger traffic ¹ by sex, 1987 - 2007

Period	Arrivals			Departures			Arrivals minus Departures
	Both Sexes	Male	Female	Both Sexes	Male	Female	
1987	293,160	161,030	132,130	294,970	160,670	134,300	-1,810
1988	343,940	186,800	157,140	341,330	187,580	153,750	+ 2,610
1989	379,080	208,860	170,220	385,050	213,230	171,820	- 5,970
1990	418,200	232,050	186,150	422,230	233,280	188,950	-4,030
1991	426,680	239,630	187,050	425,620	236,190	189,430	+ 1,060
1992	475,920	262,660	213,260	472,010	258,320	213,690	+ 3,910
1993	523,740	280,910	242,830	520,400	281,100	239,300	+ 3,340
1994	558,136	295,259	262,877	557,575	295,500	262,075	+ 561
1995	579,993	304,705	275,288	578,481	304,245	274,236	+ 1,512
1996	672,070	350,561	321,509	663,501	345,892	317,609	+ 8,569
1997	743,291	378,593	364,698	737,523	379,841	357,682	+ 5,768
1998	778,574	367,914	410,660	775,998	382,567	393,431	+ 2,576
1999	823,085	434,667	388,418	809,233	428,234	380,999	+ 13,852
2000	915,203	480,879	434,324	895,569	469,902	425,667	+ 19,634
2001	910,489	477,984	432,505	903,073	473,096	429,977	+ 7,416
2002	951,090	498,177	452,913	942,876	494,212	448,664	+ 8,214
2003	968,906	510,212	458,694	947,774	497,011	450,763	+ 21,132
2004	1,000,545	523,961	476,584	979,322	511,734	467,588	+ 21,223
2005	1,043,900	544,520	499,380	1,029,666	538,113	491,553	+ 14,234
2006	1,072,879	562,766	510,113	1,060,074	555,279	504,795	+ 12,805
2007	1,238,826	648,554	590,272	1,237,747	645,657	592,090	+ 1,079

¹ Includes traffic between Island of Mauritius and Rodrigues. As from 1994, figures of the passenger traffic also include cruise excursionists, i.e passengers and crews of cruise ships.

Table 9 - Passenger traffic ¹ between Islands of Mauritius and Rodrigues, 1987 - 2007

Period	Arrivals in Rodrigues			Departures from Rodrigues			Arrivals minus Departures
	Both Sexes	Male	Female	Both Sexes	Male	Female	
1987	8,255	5,135	3,120	8,337	5,135	3,202	-82
1988	9,146	5,903	3,243	10,128	6,330	3,798	-982
1989	11,501	7,234	4,267	11,092	6,831	4,261	+409
1990	13,110	8,023	5,087	13,492	7,949	5,543	-382
1991	15,125	9,594	5,531	16,178	10,117	6,061	-1,053
1992	19,064	11,629	7,435	19,865	11,887	7,978	-801
1993	22,819	13,973	8,846	23,476	14,094	9,382	-657
1994	23,292	14,174	9,118	23,636	14,177	9,459	-344
1995	24,150	14,532	9,618	24,820	14,603	10,217	-670
1996	29,129	16,947	12,182	29,370	16,861	12,509	-241
1997	37,765	22,120	15,645	38,014	22,096	15,918	-249
1998	40,648	24,181	16,467	40,553	23,072	17,481	+95
1999	45,117	28,384	16,733	45,154	26,961	18,193	-37
2000	49,530	28,280	21,250	49,981	29,436	20,545	-451
2001	52,777	30,320	22,457	52,307	30,760	21,547	+470
2002	60,355	34,647	25,708	59,984	34,004	25,980	+371
2003	63,649	37,203	26,446	63,937	37,673	26,264	-288
2004	60,862	34,467	26,395	60,830	34,314	26,516	+32
2005	53,534	29,805	23,729	53,987	29,447	24,540	-453
2006 ²	55,368	31,395	23,973	56,015	31,822	24,193	-647
2007	61,617	33,991	27,626	61,595	33,735	27,860	22

¹ Includes residents and non - residents² Revised

Fig 1 - Passenger traffic: Total arrivals by sex, 1991- 2007

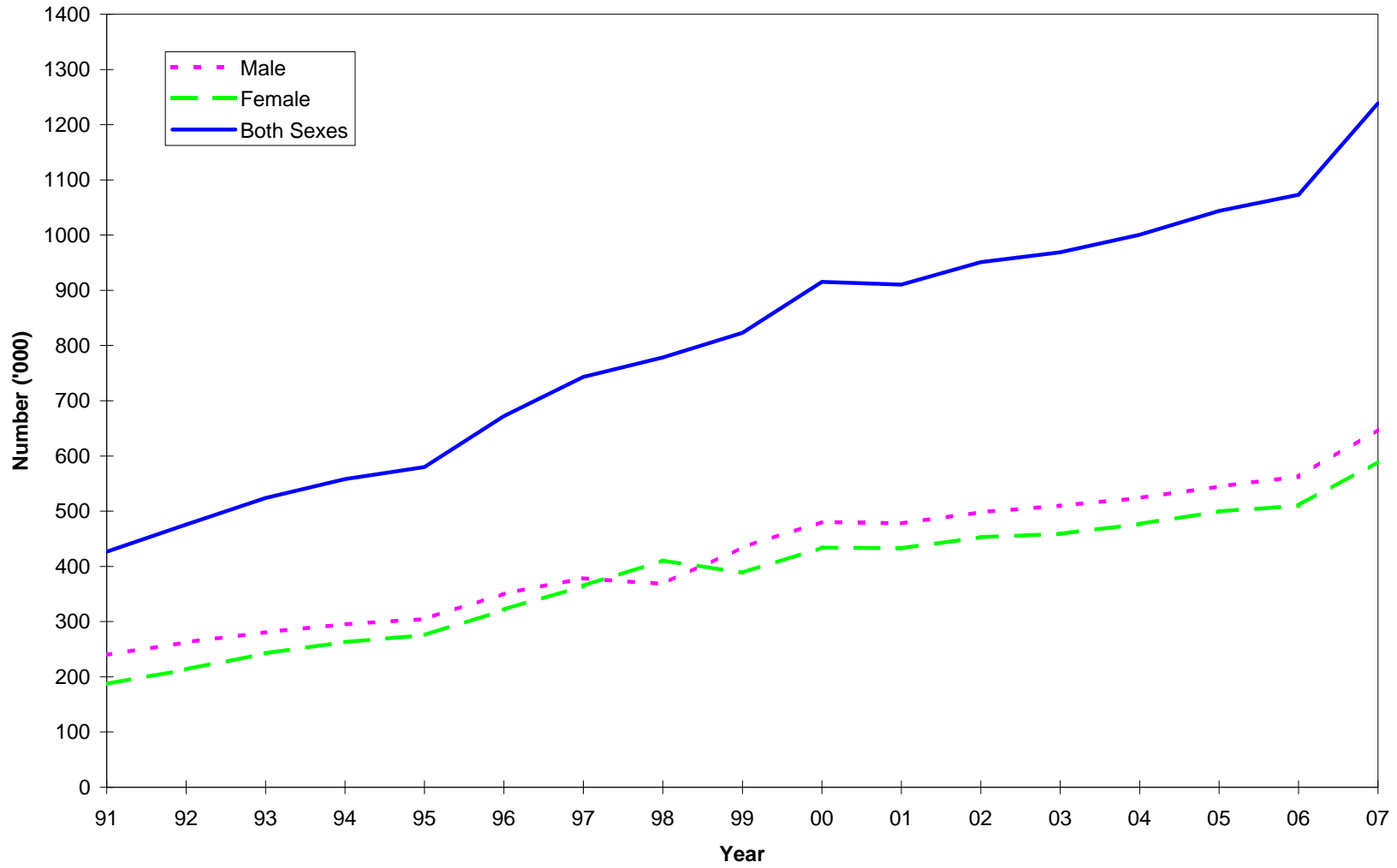


Fig 2 - Passenger traffic: Total departures by sex, 1991 - 2007

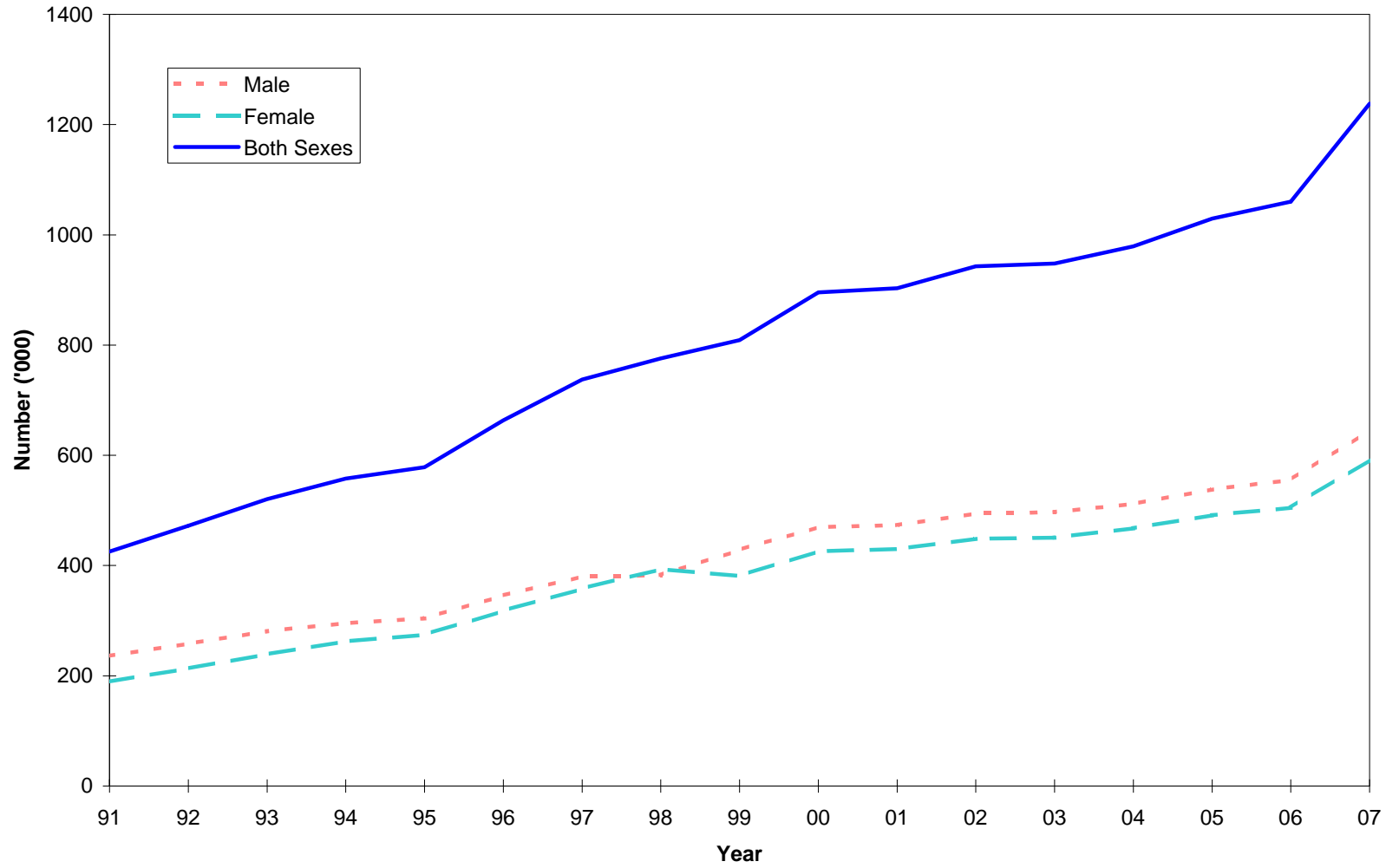


Fig. 3 - Passenger traffic : Total arrivals and total departures, 1998 - 2007

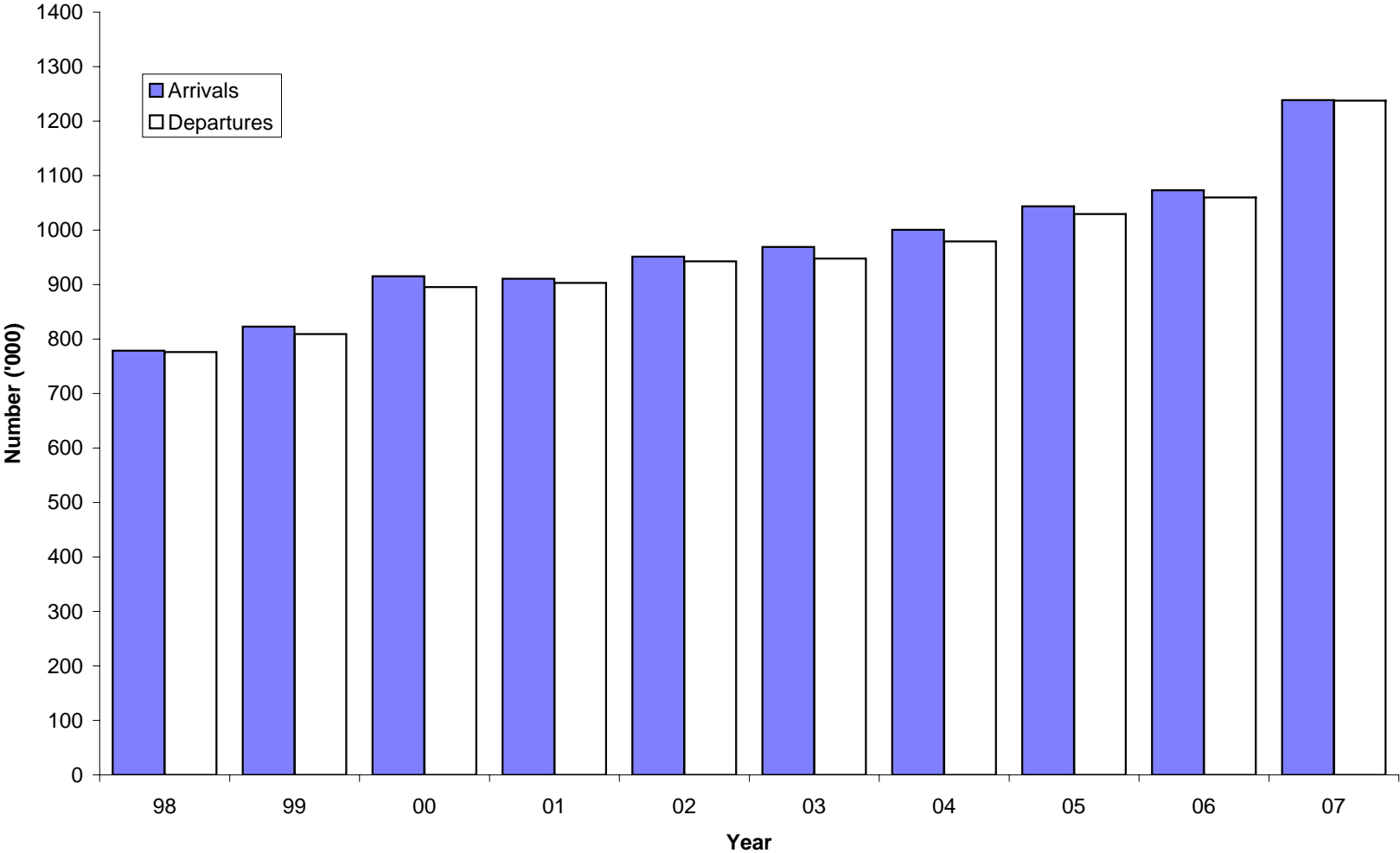


Table 10 - Passenger traffic ¹ by mode of transport, 1987 - 2007

Period	Arrivals			Departures			Arrivals minus Departures
	Total	By sea	By air	Total	By sea	By air	
1987	293,160	4,870	288,290	294,970	5,230	289,740	-1,810
1988	343,940	5,260	338,680	341,330	4,340	336,990	+2,610
1989	379,080	3,190	375,890	385,050	3,620	381,430	-5,970
1990	418,200	3,820	414,380	422,230	3,820	418,410	-4,030
1991	426,680	7,290	419,390	425,620	5,820	419,800	+1,060
1992	475,920	9,260	466,660	472,010	6,780	465,230	+3,910
1993	523,740	13,530	510,210	520,400	11,890	508,510	+3,340
1994	558,136	19,461	538,675	557,575	17,663	539,912	+561
1995	579,993	18,854	561,139	578,481	17,895	560,586	+1,512
1996	672,070	27,308	644,762	663,501	24,794	638,707	+8,569
1997	743,291	29,756	713,535	737,523	27,390	710,133	+5,768
1998	778,574	43,706	734,868	775,998	40,809	735,189	+2,576
1999	823,085	40,499	782,586	809,233	39,230	770,003	+13,852
2000	915,203	34,262	880,941	895,569	33,368	862,201	+19,634
2001	910,489	27,847	882,642	903,073	26,313	876,760	+7,416
2002	951,090	43,890	907,200	942,876	42,630	900,246	+8,214
2003	968,906	31,296	937,610	947,774	28,936	918,838	+21,132
2004	1,000,545	32,238	968,307	979,322	28,609	950,713	+21,223
2005	1,043,900	35,422	1,008,478	1,029,666	35,478	994,188	+14,234
2006	1,072,879	31,713	1,041,166	1,060,074	28,725	1,031,349	+12,805
2007	1,238,826	33,373	1,205,453	1,237,747	31,001	1,206,746	+1,079
2007:1st Qr.	315,269	9,674	305,595	337,010	9,612	327,398	-21,741
2nd Qr.	265,761	7,982	257,779	264,582	7,130	257,452	+1,179
3rd Qr.	303,564	6,110	297,454	298,468	5,539	292,929	+5,096
4th Qr.	354,232	9,607	344,625	337,687	8,720	328,967	+16,545

¹ Includes traffic between Island of Mauritius and Rodrigues. As from 1994, figures of the passenger traffic also include cruise excursionists, i.e passengers and crews of cruise ships.

Table 11 - Passenger traffic ¹ by month, 2004 - 2007

Month	Arrivals				Departures				Excess of arrivals over departures			
	2004	2005	2006	2007	2004	2005	2006	2007	2004	2005	2006	2007
January	94,499	100,280	115,801	121,388	113,360	115,517	129,705	139,856	-18,861	-15,237	-13,904	-18,468
February	72,707	74,305	83,952	90,304	66,795	72,084	84,174	89,376	+ 5,912	+ 2,221	-222	+ 928
March	86,558	88,986	78,167	103,577	82,305	88,710	86,328	107,778	+4,253	+ 276	-8161	-4,201
April	78,417	75,622	78,461	98,857	72,693	78,281	76,574	99,822	+5,724	-2659	+ 1,887	-965
May	73,603	77,272	70,188	88,674	75,660	79,660	72,775	91,385	-2,057	-2,388	-2,587	-2,711
June	58,550	64,325	63,559	78,230	59,424	58,353	59,685	73,375	-874	+5,972	+3,874	+ 4,855
July	88,905	92,748	95,775	111,873	74,021	77,677	81,639	96,072	+ 14,884	+ 15,071	+14,136	+15,801
August	84,122	89,531	92,048	102,673	94,450	100,304	100,271	111,756	-10,328	-10,773	-8,223	-9,083
September	72,626	74,165	76,519	89,018	74,289	78,182	78,512	90,640	-1663	-4,017	- 1,993	- 1,622
October	92,771	91,633	96,033	105,278	86,832	88,915	90,243	105,800	+ 5,939	+ 2,718	+5,790	-522
November	89,123	94,678	95,261	106,490	88,677	91,531	94,380	108,920	+ 446	+ 3,147	+881	-2430
December	108,664	120,355	127,115	142,464	90,816	100,452	105,788	122,967	+ 17,848	+ 19,903	+21,327	+19,497
Whole Year	1,000,545	1,043,900	1,072,879	1,238,826	979,322	1,029,666	1,060,074	1,237,747	+21,223	+14,234	+12,805	+1,079

¹ Includes traffic between Island of Mauritius and Rodrigues. Figures of the passenger traffic also include cruise excursionists, i.e passengers and crews of cruise ships.

Table 12 - Arrivals ¹ by country of original embarkation, 2002- 2007

Country of original embarkation	2002	2003	2004	2005	2006	2007
Australia	11,586	13,350	16,417	18,282	21,563	26,181
Belgium	8,719	8,485	2,778	619	484	127
France	185,142	183,710	197,937	208,271	201,444	246,006
Germany	47,958	49,466	47,601	51,958	56,982	65,876
Hong Kong SAR ²	19,081	10,902	17,453	20,764	20,782	26,245
India	38,388	45,750	49,268	51,500	58,910	66,329
Italy	33,239	34,673	35,486	37,301	60,741	64,048
Japan	297	191	140	53	65	33
Kenya	5,318	6,109	6,172	1,925	9,734	8,459
Malagasy Rep.	14,898	20,848	20,242	26,515	22,141	27,343
Reunion Island	218,488	215,700	215,820	216,414	176,157	203,508
Rodrigues	59,984	63,916	60,830	53,987	56,015	61,595
Seychelles	22,151	17,585	14,751	21,718	23,766	26,795
Singapore	19,804	14,019	15,374	17,855	13,571	18,953
S. Africa, Rep. of	84,713	88,816	93,598	101,294	117,175	136,487
Switzerland	16,753	17,556	13,402	12,722	14,249	16,250
United Kingdom	96,463	103,630	112,795	115,400	116,724	128,983
Zambia	37	190	156	26	16	12
Zimbabwe	4,042	2,469	2,439	2,676	688	175
Other & not stated	64,029	71,541	77,886	84,620	101,672	115,421
All Countries	951,090	968,906	1,000,545	1,043,900	1,072,879	1,238,826

¹ As from 1994, figures of the passenger arrivals include cruise excursionists, i.e passengers and crews of cruise ships which numbered 19613, 9965, 9927, 11553, 11651 and 9747 for 2002, 2003, 2004, 2005, 2006 and 2007 respectively, in accordance with the recommendations of the World Tourism Organisation.

² Special Administrative Region of China

Table 13 - Departures ¹ by country of final destination, 2002 - 2007

Country of final destination	2002	2003	2004	2005	2006	2007
Australia	11,063	12,698	16,108	18,931	22,579	29,325
Belgium	5,163	7,546	1,521	102	65	247
France	202,902	197,413	208,070	221,372	215,093	261,855
Germany	52,460	50,370	50,083	53,368	56,377	68,261
Hong Kong SAR ²	16,025	9,010	16,042	19,052	17,898	21,441
India	36,499	42,508	46,669	50,784	55,942	64,669
Italy	29,479	31,958	32,351	35,022	57,922	64,939
Japan	22	111	28	41	10	13
Kenya	4,103	5,167	5,122	1,103	6,258	6,236
Malagasy Rep.	15,302	20,700	21,558	26,611	21,722	27,815
Reunion Island	210,864	204,666	206,012	205,625	176,007	200,200
Rodrigues	60,355	63,584	60,862	53,534	55,368	61,617
Seychelles	21,411	16,325	13,339	21,128	23,844	28,189
Singapore	23,382	15,392	16,715	17,513	18,405	17,955
S. Africa, Rep. of	80,942	81,848	84,821	91,817	107,201	122,724
Switzerland	18,741	17,337	12,738	11,443	13,148	16,136
United Kingdom	98,989	103,328	114,328	117,045	119,260	130,804
Zambia	1	111	20	8	13	3
Zimbabwe	4,189	2,267	2,462	2,352	735	45
Other & not stated	50,984	65,435	70,473	82,815	92,227	115,273
All Countries	942,876	947,774	979,322	1,029,666	1,060,074	1,237,747

¹ As from 1994, figures of the passenger departures include cruise excursionists, i.e passengers and crews of cruise ships which numbered 20288, 9748, 8682, 12772, 11323 and 9861 for 2002, 2003, 2004, 2005, 2006 and 2007 respectively, in accordance with the recommendations of the World Tourism Organisation.

² Special Administrative Region of China

Table 14 - Monthly passenger traffic ¹ by type of passenger, 2007

Type of passenger	Jan	Feb	Mar	Apr	May	Jun	Jul	Aug	Sep	Oct	Nov	Dec	Whole Year
Arrivals													
Visitors ²	93,350	74,076	83,451	73,955	66,358	53,787	79,170	71,753	66,860	83,332	78,554	108,136	932,782
- On holiday	84,454	67,343	72,317	64,840	57,371	45,092	68,946	61,956	58,489	73,339	69,498	95,069	818,714
- On business & Conference	1,802	2,391	3,797	2,273	3,904	3,530	2,771	2,517	2,933	3,050	3,209	2,456	34,633
- In transit	5,936	3,567	6,448	5,964	3,697	3,451	5,466	5,344	3,790	5,215	3,796	8,512	61,186
- Other and not stated	1,158	775	889	878	1,386	1,714	1,987	1,936	1,648	1,728	2,051	2,099	18,249
Mauritian residents	25,307	14,275	17,950	22,284	19,525	21,928	30,219	28,219	19,808	19,834	25,804	32,216	277,369
Other ³	2,731	1,953	2,176	2,618	2,791	2,515	2,484	2,701	2,350	2,112	2,132	2,112	28,675
Total arrivals	121,388	90,304	103,577	98,857	88,674	78,230	111,873	102,673	89,018	105,278	106,490	142,464	1,238,826
Departures													
Visitors	114,706	72,173	87,038	75,593	70,895	51,900	68,653	82,155	65,629	82,968	81,181	89,483	942,374
Mauritian residents	23,437	15,539	19,181	22,463	18,909	19,642	25,503	27,996	23,502	21,200	26,305	31,109	274,786
Other	1,713	1,664	1,559	1,766	1,581	1,833	1,916	1,605	1,509	1,632	1,434	2,375	20,587
Total departures	139,856	89,376	107,778	99,822	91,385	73,375	96,072	111,756	90,640	105,800	108,920	122,967	1,237,747

¹ Including traffic between Island of Mauritius and Rodrigues

² Including non-residents who left the airport but stayed in the country for less than a day.

³ Including contract workers

Table 15 - Passenger traffic ¹ by type of passenger, 1998 - 2007

Type of passenger	1998	1999	2000	2001	2002	2003	2004	2005	2006	2007
Arrivals										
Visitors ²	578,930	599,717	678,472	674,619	709,305	721,348	738,516	781,572	806,652	932,782
- On holiday	512,746	530,792	602,606	606,545	620,124	636,325	653,818	692,084	712,620	818,714
- On business & Conference	24,621	26,942	27,004	26,523	28,558	31,155	30,416	30,164	32,511	34,633
- In transit	35,479	34,703	38,984	33,263	51,747	42,736	44,710	48,299	47,966	61,186
- Other & not stated	6,084	7,280	9,878	8,288	8,876	11,132	9,572	11,025	13,555	18,249
Mauritian residents	183,218	206,806	216,680	215,803	220,949	227,288	239,969	239,389	242,330	277,369
Other ³	16,426	16,562	20,051	20,067	20,836	20,270	22,060	22,939	23,897	28,675
Total arrivals	778,574	823,085	915,203	910,489	951,090	968,906	1,000,545	1,043,900	1,072,879	1,238,826
Departures										
Visitors	580,863	596,953	667,212	672,388	704,548	705,849	718,789	773,951	801,702	942,374
Mauritian residents	183,355	199,245	212,879	213,778	221,889	224,771	240,823	236,457	241,138	274,786
Other	11,780	13,035	15,478	16,907	16,439	17,154	19,710	19,258	17,234	20,587
Total departures	775,998	809,233	895,569	903,073	942,876	947,774	979,322	1,029,666	1,060,074	1,237,747

¹ Including traffic between Island of Mauritius and Rodrigues. As from 1994, figures of the passenger traffic also include cruise excursionists, i.e passengers and crews of cruise ships.

² Including non-residents who left the airport but stayed in the country for less than a day.

³ Including contract workers.

Table 16 - Total arrivals ¹ by age and sex, 2006 & 2007

Age (years)	2006			2007			January - June 2007			July - December 2007		
	Both Sexes	Male	Female	Both Sexes	Male	Female	Both Sexes	Male	Female	Both Sexes	Male	Female
Under 1	5,072	2,580	2,492	6,340	3,152	3,188	3,047	1,453	1,594	3,293	1,699	1,594
1 - 4	29,131	14,650	14,481	35,094	17,603	17,491	16,962	8,497	8,465	18,132	9,106	9,026
5 - 9	40,301	20,407	19,894	47,786	24,256	23,530	21,790	10,972	10,818	25,996	13,284	12,712
10 - 14	40,504	20,261	20,243	46,642	23,596	23,046	20,165	10,011	10,154	26,477	13,585	12,892
15 - 19	35,549	16,733	18,816	39,292	18,445	20,847	16,527	7,643	8,884	22,765	10,802	11,963
20 - 24	55,465	23,758	31,707	62,410	26,611	35,799	27,315	11,533	15,782	35,095	15,078	20,017
25 - 29	112,138	52,512	59,626	129,091	60,537	68,554	55,973	26,254	29,719	73,118	34,283	38,835
30 - 34	120,388	62,820	57,568	136,330	71,245	65,085	63,611	33,049	30,562	72,719	38,196	34,523
35 - 39	113,083	62,142	50,941	130,902	71,933	58,969	63,586	34,629	28,957	67,316	37,304	30,012
40 - 44	108,556	60,499	48,057	124,409	69,484	54,925	60,335	33,940	26,395	64,074	35,544	28,530
45 - 49	95,145	52,008	43,137	109,945	59,880	50,065	52,732	28,827	23,905	57,213	31,053	26,160
50 - 54	83,209	45,421	37,788	97,000	52,708	44,292	46,659	25,362	21,297	50,341	27,346	22,995
55 - 59	69,613	38,006	31,607	81,482	44,645	36,837	39,796	21,845	17,951	41,686	22,800	18,886
60 - 64	46,698	25,372	21,326	57,588	31,154	26,434	27,658	15,030	12,628	29,930	16,124	13,806
65 - 69	28,002	15,422	12,580	33,402	18,516	14,886	16,183	9,095	7,088	17,219	9,421	7,798
70 & over	26,201	14,057	12,144	30,872	16,300	14,572	14,155	7,703	6,452	16,717	8,597	8,120
Not stated	63,824	36,118	27,706	70,241	38,489	31,752	34,536	19,322	15,214	35,705	19,167	16,538
All ages	1,072,879	562,766	510,113	1,238,826	648,554	590,272	581,030	305,165	275,865	657,796	343,389	314,407

¹ Include arrivals from Rodrigues and cruise excursionists, i.e passengers and crews of cruise ships which numbered 11651 and 9747 for 2006 and 2007 respectively, in accordance with the recommendations of the World Tourism Organisation.

Table 17 - Total departures ¹ by age and sex, 2006 & 2007

Age (years)	2006			2007			January - June 2007			July - December 2007		
	Both Sexes	Male	Female	Both Sexes	Male	Female	Both Sexes	Male	Female	Both Sexes	Male	Female
Under 1	4,687	2,421	2,266	5,706	2,796	2,910	3,005	1,415	1,590	2,701	1,381	1,320
1 - 4	29,222	14,732	14,490	34,192	17,164	17,028	18,336	9,163	9,173	15,856	8,001	7,855
5 - 9	40,176	20,246	19,930	47,486	24,190	23,296	24,224	12,259	11,965	23,262	11,931	11,331
10 - 14	40,475	20,206	20,269	47,504	24,009	23,495	22,631	11,281	11,350	24,873	12,728	12,145
15 - 19	36,705	17,361	19,344	41,116	19,410	21,706	18,384	8,537	9,847	22,732	10,873	11,859
20 - 24	54,106	23,108	30,998	60,898	25,393	35,505	27,382	11,412	15,970	33,516	13,981	19,535
25 - 29	109,300	51,037	58,263	127,463	59,252	68,211	55,869	26,045	29,824	71,594	33,207	38,387
30 - 34	117,913	61,738	56,175	135,771	70,621	65,150	64,306	33,068	31,238	71,465	37,553	33,912
35 - 39	109,943	60,205	49,738	129,231	70,725	58,506	64,997	35,034	29,963	64,234	35,691	28,543
40 - 44	107,264	59,699	47,565	124,847	69,252	55,595	63,537	35,311	28,226	61,310	33,941	27,369
45 - 49	93,342	51,088	42,254	109,217	59,417	49,800	54,689	29,770	24,919	54,528	29,647	24,881
50 - 54	83,533	45,187	38,346	97,929	52,926	45,003	48,749	26,351	22,398	49,180	26,575	22,605
55 - 59	68,934	37,506	31,428	81,159	44,347	36,812	40,765	22,293	18,472	40,394	22,054	18,340
60 - 64	47,254	25,682	21,572	58,270	31,489	26,781	28,914	15,616	13,298	29,356	15,873	13,483
65 - 69	27,766	15,282	12,484	33,604	18,530	15,074	17,030	9,473	7,557	16,574	9,057	7,517
70 & over	26,498	14,212	12,286	33,030	17,356	15,674	15,679	8,429	7,250	17,351	8,927	8,424
Not stated	62,956	35,569	27,387	70,324	38,780	31,544	33,095	18,730	14,365	37,229	20,050	17,179
All ages	1,060,074	555,279	504,795	1,237,747	645,657	592,090	601,592	314,187	287,405	636,155	331,470	304,685

¹ Include departures to Rodrigues and cruise excursionists, i.e passengers and crews of cruise ships which numbered 11323 and 9861 for 2006 and 2007 respectively, in accordance with the recommendations of the World Tourism Organisation.

Table 18 - Excess of arrivals over departures ¹ by age and sex, 2006 & 2007

Age (years)	2006			2007			January - June 2007			July - December 2007		
	Both Sexes	Male	Female	Both Sexes	Male	Female	Both Sexes	Male	Female	Both Sexes	Male	Female
Under 1	385	159	226	634	356	278	42	38	4	592	318	274
1 - 4	-91	-82	-9	902	439	463	-1,374	-666	-708	2,276	1,105	1,171
5 - 9	125	161	-36	300	66	234	-2,434	-1,287	-1,147	2,734	1,353	1,381
10 - 14	29	55	-26	-862	-413	-449	-2,466	-1,270	-1,196	1,604	857	747
15 - 19	-1,156	-628	-528	-1,824	-965	-859	-1,857	-894	-963	33	-71	104
20 - 24	1,359	650	709	1,512	1,218	294	-67	121	-188	1,579	1,097	482
25 - 29	2,838	1,475	1,363	1,628	1,285	343	104	209	-105	1,524	1,076	448
30 - 34	2,475	1,082	1,393	559	624	-65	-695	-19	-676	1,254	643	611
35 - 39	3,140	1,937	1,203	1,671	1,208	463	-1,411	-405	-1,006	3,082	1,613	1,469
40 - 44	1,292	800	492	-438	232	-670	-3,202	-1,371	-1,831	2,764	1,603	1,161
45 - 49	1,803	920	883	728	463	265	-1,957	-943	-1,014	2,685	1,406	1,279
50 - 54	-324	234	-558	-929	-218	-711	-2,090	-989	-1,101	1,161	771	390
55 - 59	679	500	179	323	298	25	-969	-448	-521	1,292	746	546
60 - 64	-556	-310	-246	-682	-335	-347	-1,256	-586	-670	574	251	323
65 - 69	236	140	96	-202	-14	-188	-847	-378	-469	645	364	281
70 & over	-297	-155	-142	-2,158	-1,056	-1,102	-1,524	-726	-798	-634	-330	-304
Not stated	868	549	319	-83	-291	208	1,441	592	849	-1,524	-883	-641
All ages	12,805	7,487	5,318	1,079	2,897	-1,818	-20,562	-9,022	-11,540	21,641	11,919	9,722

¹ Including traffic between Island of Mauritius and Rodrigues

Table 19 - Arrivals¹ of Mauritian residents by age and sex, 2006 & 2007

Age (years)	2006			2007			January - June 2007			July - December 2007		
	Both Sexes	Male	Female	Both Sexes	Male	Female	Both Sexes	Male	Female	Both Sexes	Male	Female
Under 1	516	275	241	647	316	331	295	152	143	352	164	188
1 - 4	3,130	1,578	1,552	3,525	1,746	1,779	1,607	799	808	1,918	947	971
5 - 9	4,914	2,476	2,438	5,346	2,755	2,591	2,191	1,127	1,064	3,155	1,628	1,527
10 - 14	5,393	2,642	2,751	6,062	3,101	2,961	2,353	1,183	1,170	3,709	1,918	1,791
15 - 19	6,350	2,968	3,382	7,054	3,462	3,592	3,051	1,483	1,568	4,003	1,979	2,024
20 - 24	12,869	6,512	6,357	14,424	6,970	7,454	5,889	2,804	3,085	8,535	4,166	4,369
25 - 29	18,459	9,591	8,868	21,830	10,909	10,921	9,114	4,585	4,529	12,716	6,324	6,392
30 - 34	17,676	9,657	8,019	22,434	11,863	10,571	9,314	5,157	4,157	13,120	6,706	6,414
35 - 39	19,477	11,474	8,003	23,450	13,660	9,790	9,881	5,818	4,063	13,569	7,842	5,727
40 - 44	22,063	12,944	9,119	24,589	14,540	10,049	10,527	6,441	4,086	14,062	8,099	5,963
45 - 49	20,066	11,191	8,875	22,310	12,427	9,883	9,654	5,460	4,194	12,656	6,967	5,689
50 - 54	18,627	9,908	8,719	21,171	11,200	9,971	9,480	5,026	4,454	11,691	6,174	5,517
55 - 59	15,236	8,183	7,053	17,678	9,528	8,150	7,994	4,392	3,602	9,684	5,136	4,548
60 - 64	9,542	4,979	4,563	11,403	5,942	5,461	5,143	2,729	2,414	6,260	3,213	3,047
65 - 69	5,740	2,933	2,807	6,694	3,489	3,205	3,055	1,644	1,411	3,639	1,845	1,794
70 & over	6,256	3,157	3,099	7,157	3,508	3,649	3,169	1,596	1,573	3,988	1,912	2,076
Not stated	56,016	31,822	24,194	61,595	33,735	27,860	28,552	16,031	12,521	33,043	17,704	15,339
All ages	242,330	132,290	110,040	277,369	149,151	128,218	121,269	66,427	54,842	156,100	82,724	73,376

¹ Including arrivals from Rodrigues

Table 20 - Departures ¹ of Mauritian residents by age and sex, 2006 & 2007

Age (years)	2006			2007			January - June 2007			July - December 2007		
	Both Sexes	Male	Female	Both Sexes	Male	Female	Both Sexes	Male	Female	Both Sexes	Male	Female
Under 1	629	340	289	696	339	357	311	152	159	385	187	198
1 - 4	3,456	1,751	1,705	3,711	1,832	1,879	1,616	792	824	2,095	1,040	1,055
5 - 9	5,206	2,615	2,591	5,512	2,849	2,663	1,919	1,011	908	3,593	1,838	1,755
10 - 14	5,637	2,752	2,885	6,215	3,186	3,029	1,847	958	889	4,368	2,228	2,140
15 - 19	7,827	3,770	4,057	8,343	4,130	4,213	2,901	1,408	1,493	5,442	2,722	2,720
20 - 24	13,730	7,093	6,637	14,836	7,336	7,500	6,508	3,280	3,228	8,328	4,056	4,272
25 - 29	17,948	9,483	8,465	21,309	10,881	10,428	9,694	5,110	4,584	11,615	5,771	5,844
30 - 34	16,425	9,247	7,178	21,291	11,402	9,889	9,185	5,216	3,969	12,106	6,186	5,920
35 - 39	18,020	10,618	7,402	22,229	12,966	9,263	9,651	5,721	3,930	12,578	7,245	5,333
40 - 44	21,467	12,620	8,847	23,986	14,104	9,882	10,453	6,388	4,065	13,533	7,716	5,817
45 - 49	20,030	11,106	8,924	21,958	12,311	9,647	9,583	5,485	4,098	12,375	6,826	5,549
50 - 54	18,732	9,930	8,802	20,961	11,097	9,864	9,353	4,946	4,407	11,608	6,151	5,457
55 - 59	15,177	8,153	7,024	17,337	9,300	8,037	7,785	4,230	3,555	9,552	5,070	4,482
60 - 64	9,630	5,045	4,585	11,176	5,872	5,304	4,969	2,585	2,384	6,207	3,287	2,920
65 - 69	5,627	2,879	2,748	6,571	3,385	3,186	3,022	1,564	1,458	3,549	1,821	1,728
70 & over	6,228	3,143	3,085	7,036	3,448	3,588	3,263	1,596	1,667	3,773	1,852	1,921
Not stated	55,369	31,396	23,973	61,619	33,993	27,626	27,111	15,440	11,671	34,508	18,553	15,955
All ages	241,138	131,941	109,197	274,786	148,431	126,355	119,171	65,882	53,289	155,615	82,549	73,066

¹ Including departures to Rodrigues

Table 21 - Excess of arrivals over departures¹ of Mauritian residents by age & sex, 2006 & 2007

Age (years)	2006			2007			January - June 2007			July - December 2007		
	Both Sexes	Male	Female	Both Sexes	Male	Female	Both Sexes	Male	Female	Both Sexes	Male	Female
Under 1	-113	-65	-48	-49	-23	-26	-16	-	-16	-33	-23	-10
1 - 4	-326	-173	-153	-186	-86	-100	-9	7	-16	-177	-93	-84
5 - 9	-292	-139	-153	-166	-94	-72	272	116	156	-438	-210	-228
10 - 14	-244	-110	-134	-153	-85	-68	506	225	281	-659	-310	-349
15 - 19	-1,477	-802	-675	-1,289	-668	-621	150	75	75	-1,439	-743	-696
20 - 24	-861	-581	-280	-412	-366	-46	-619	-476	-143	207	110	97
25 - 29	511	108	403	521	28	493	-580	-525	-55	1,101	553	548
30 - 34	1,251	410	841	1,143	461	682	129	-59	188	1,014	520	494
35 - 39	1,457	856	601	1,221	694	527	230	97	133	991	597	394
40 - 44	596	324	272	603	436	167	74	53	21	529	383	146
45 - 49	36	85	-49	352	116	236	71	-25	96	281	141	140
50 - 54	-105	-22	-83	210	103	107	127	80	47	83	23	60
55 - 59	59	30	29	341	228	113	209	162	47	132	66	66
60 - 64	-88	-66	-22	227	70	157	174	144	30	53	-74	127
65 - 69	113	54	59	123	104	19	33	80	-47	90	24	66
70 & over	28	14	14	121	60	61	-94	-	-94	215	60	155
Not stated	647	426	221	-24	-258	234	1,441	591	850	-1,465	-849	-616
All ages	1,192	349	843	2,583	720	1,863	2,098	545	1,553	485	175	310

¹ Including traffic between Island of Mauritius and Rodrigues.

Table 22 - Arrivals and departures of Mauritian residents¹ by country of embarkation and disembarkation, 2005 - 2007

Country of embarkation/ disembarkation	Arrivals			Departures			Excess of arrivals over departures		
	2005	2006	2007	2005	2006	2007	2005	2006	2007
Australia	6,889	7,368	9,242	7,000	7,904	9,980	-111	-536	-738
Belgium	61	40	37	26	20	88	35	20	-51
Canada	126	108	30	58	24	14	68	84	16
France	27,264	29,059	31,227	26,840	30,299	32,118	424	-1,240	-891
Germany	2,388	2,435	3,163	2,121	2,151	2,888	267	284	275
Hong Kong SAR ²	9,155	9,856	11,434	9,746	10,379	11,875	-591	-523	-441
India	18,086	19,597	21,292	17,979	19,321	21,190	107	276	102
Italy	3,771	4,278	4,987	3,643	3,464	4,404	128	814	583
Kenya	252	1,222	1,802	44	1,188	1,724	208	34	78
Rodrigues	53,987	56,015	61,595	53,534	55,368	61,617	453	647	-22
Reunion	31,447	27,480	32,983	29,994	26,661	31,311	1,453	819	1,672
Singapore	9,692	6,768	10,344	9,417	9,584	9,571	275	-2,816	773
S. Africa, Rep of	14,457	13,979	17,207	13,384	13,167	16,301	1,073	812	906
Switzerland	2,031	2,316	2,555	1,581	2,255	2,522	450	61	33
United Kingdom	31,711	30,580	35,023	31,342	30,715	33,913	369	-135	1,110
Other countries	28,072	31,229	34,448	29,748	28,638	35,270	-1,676	2,591	-822
All Countries	239,389	242,330	277,369	236,457	241,138	274,786	2,932	1,192	2,583

¹ Including traffic between Island of Mauritius and Rodrigues

² Special Administrative Region of China

III - TOURISM

Definition and notes

1. Definition of tourist

(a) prior to 1964, a tourist has been defined as a non-resident staying in Mauritius for more than 24 hours but less than 6 months.

(b) as from 1964, a tourist is defined as a non-resident staying in Mauritius for more than 24 hours but less than a year and is not involved in any gainful occupation .

The figures for the two periods are nevertheless comparable because of the small number of tourists staying for more than 6 months.

2. Visitors include the following:

(a) tourists as defined above; and

(b) cruise ship passengers and non-residents who stayed in the country for less than a day, other than those who do not leave the airport.

3. Method of compilation

Sources of data

The main source of data for the compilation of passenger traffic statistics is the Passport and Immigration Office which maintains a database of all passengers entering and leaving the country. The data are extracted from the Embarkation / Disembarkation cards filled in by all incoming and outgoing passengers. At the end of every month, passenger traffic for that particular month is downloaded and supplied to the statistics unit of the Ministry of Tourism, Leisure and External Communications within fifteen days. Additional data on cruises are supplied by the Mauritius Ports Authority.

Prior to 1994, figures have been compiled from a 10% sample of embarkation and disembarkation cards filled in by passengers. However, as from January 1994, they are based on movements of all passengers. Thus disaggregated data for 1994 onwards may not be strictly comparable to previous series.

Tourism receipts

The Bank of Mauritius is responsible for the estimation of tourism receipts based on monthly statements of Inward and Outward Remittances of Commercial Banks.

Monthly Occupancy Rates

All hotels are contacted by mail and/or phone at the end of every month on room / bed nights available and rented during the month for the calculation of room and bed occupancy.

4. Tourist nights

Tables on tourist nights show the number of nights spent by tourists who were present in the country during the period under review. Thus the number of tourist nights for 2007 include:

(a) the nights spent during 2007 by tourists who arrived prior to 1st January 2007; and

(b) the nights spent during 2007 by tourists who arrived during the same year.

However, nights spent after 31st December 2007 by tourists who arrived in 2007 are excluded.

5. Large hotels

Large hotels are well established beach hotels of over 80 rooms.

Table 23 -Tourist arrivals by mode of transport and tourist nights spent during period, 1991 - 2007

Period	Tourist arrivals			Tourist nights spent during period	% change over previous year	
	Sea	Air	Total		Tourist arrivals	Tourist nights
1991	2,500	298,170	300,670	3,696,990	+ 3.1	+ 3.7
1992	2,630	332,770	335,400	4,110,430	+ 11.6	+ 11.2
1993	5,710	368,920	374,630	4,610,400	+ 11.7	+ 12.2
1994	6,383	394,143	400,526	4,359,303	+ 6.9	- 5.4
1995	6,105	416,358	422,463	4,434,891	+ 5.5	+ 1.7
1996	6,484	480,383	486,867	4,957,683	+ 15.2	+ 11.8
1997	7,476	528,649	536,125	5,451,314	+ 10.1	+ 10.0
1998	17,109	541,086	558,195	5,567,889	+ 4.1	+ 2.1
1999	13,852	564,233	578,085	5,729,464	+ 3.6	+ 2.9
2000	10,677	645,776	656,453	6,412,876	+ 13.6	+ 11.9
2001	10,532	649,786	660,318	6,527,800	+ 0.6	+ 1.8
2002	14,180	667,468	681,648	6,768,870	+ 3.2	+ 3.7
2003	12,155	689,863	702,018	6,952,313	+ 3.0	+ 2.7
2004	11,390	707,471	718,861	7,118,603	+ 2.4	+ 2.4
2005	13,321	747,742	761,063	7,498,251	+ 5.9	+ 5.3
2006	13,249	775,027	788,276	7,760,679	+ 3.6	+ 3.5
2007	12,163	894,808	906,971	8,986,934 ¹	+ 15.1	+ 15.8

¹ Provisional

Table 24 - Tourist arrivals by month of arrival, 1998 - 2007

Month of arrival	1998	1999	2000	2001	2002	2003	2004	2005	2006	2007
January	54,839	59,680	62,355	65,122	63,551	64,762	66,543	73,053	86,218	91,628
February	41,928	41,859	50,466	49,464	50,554	53,647	54,104	56,367	64,894	72,338
March	48,440	50,707	54,872	55,944	67,554	63,129	63,631	67,931	58,136	79,965
April	45,433	41,536	56,353	54,794	48,187	57,217	55,599	52,971	57,361	70,297
May	43,790	42,254	49,960	51,969	53,813	54,710	53,974	55,995	50,773	65,301
June	30,387	35,910	39,885	38,496	39,048	41,841	38,826	42,994	42,755	52,584
July	40,700	42,862	51,577	57,274	56,709	58,403	62,173	65,462	65,540	77,225
August	54,651	57,321	59,731	52,923	53,395	56,844	55,342	60,746	64,307	69,941
September	39,228	41,383	47,634	48,953	49,774	50,293	53,102	53,233	56,138	65,542
October	49,090	55,128	61,526	59,325	65,291	64,917	70,793	70,999	75,451	81,244
November	52,563	56,584	57,334	57,326	61,326	61,984	66,960	70,793	70,394	77,236
December	57,146	52,861	64,760	68,728	72,446	74,271	77,814	90,519	96,309	103,670
Whole Year	558,195	578,085	656,453	660,318	681,648	702,018	718,861	761,063	788,276	906,971

Fig 4 - Tourist arrivals by month, 2003- 2007

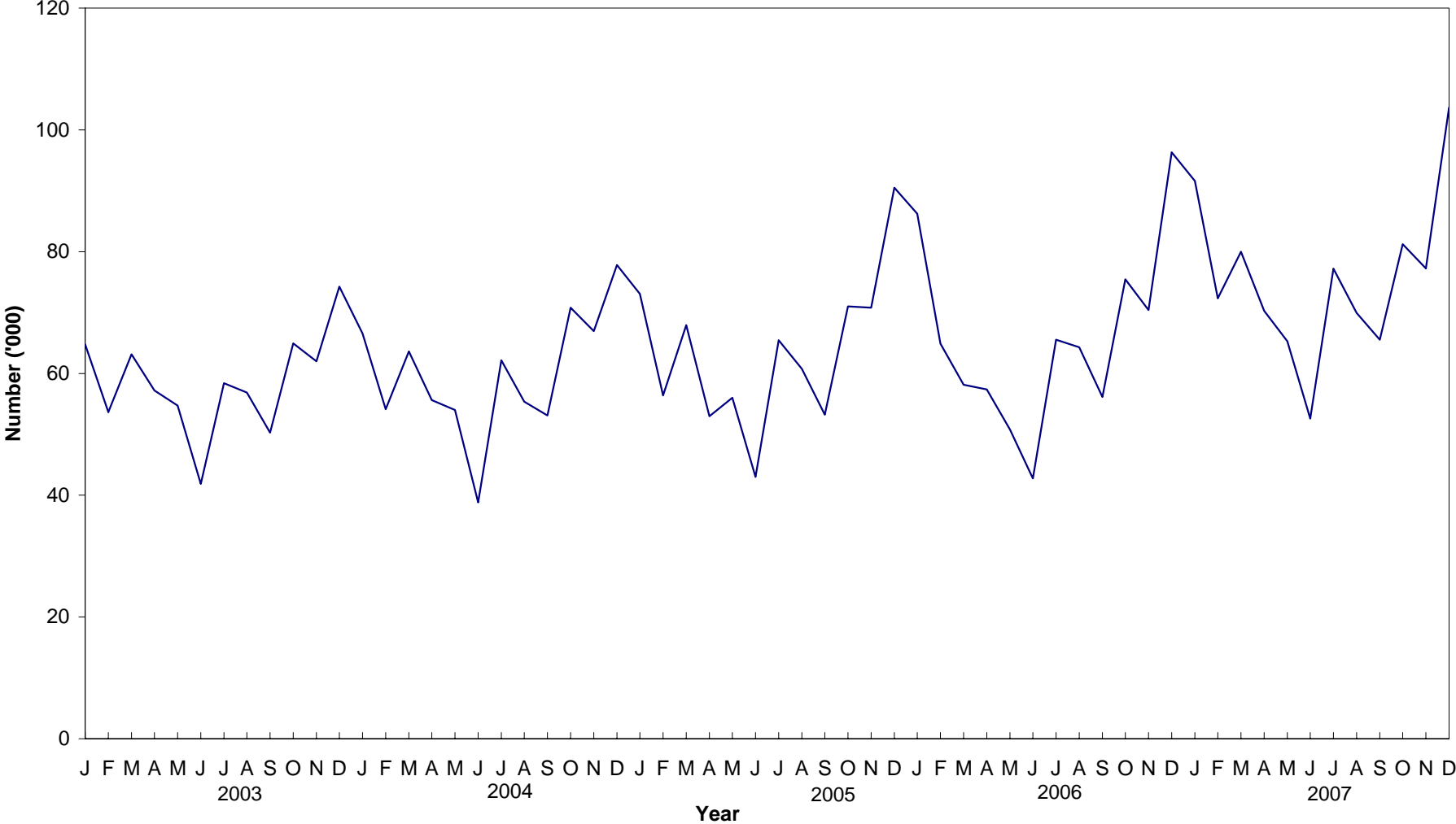


Table 25 - Percentage distribution of tourist arrivals by month of arrival, 1998 - 2007

Month of arrival	1998	1999	2000	2001	2002	2003	2004	2005	2006	2007
January	9.8	10.3	9.5	9.9	9.3	9.2	9.3	9.6	10.9	10.1
February	7.5	7.2	7.7	7.5	7.4	7.6	7.5	7.4	8.2	8.0
March	8.7	8.8	8.4	8.5	9.9	9.0	8.9	8.9	7.4	8.8
April	8.1	7.2	8.6	8.3	7.1	8.2	7.7	7.0	7.3	7.8
May	7.8	7.3	7.6	7.9	7.9	7.8	7.5	7.4	6.4	7.2
June	5.4	6.2	6.1	5.8	5.7	6.0	5.4	5.6	5.4	5.8
July	7.3	7.4	7.9	8.7	8.3	8.3	8.6	8.6	8.3	8.5
August	9.8	9.9	9.1	8.0	7.8	8.1	7.7	8.0	8.2	7.7
September	7.0	7.2	7.3	7.4	7.3	7.2	7.4	7.0	7.1	7.2
October	8.8	9.5	9.4	9.0	9.6	9.2	9.8	9.3	9.6	9.0
November	9.4	9.8	8.7	8.7	9.0	8.8	9.3	9.3	8.9	8.5
December	10.2	9.1	9.9	10.4	10.6	10.6	10.8	11.9	12.2	11.4
Whole Year	100.0	100.0	100.0	100.0	100.0	100.0	100.0	100.0	100.0	100.0

Table 26 - Tourist arrivals by country of residence and sex, 2007

Country of residence	Male	Female	Both Sexes
Australia	9,849	9,786	19,635
Belgium	5,884	5,061	10,945
France	121,207	118,821	240,028
Germany	33,301	31,864	65,165
Hong Kong SAR ¹	377	272	649
India	25,989	16,985	42,974
Italy	33,594	35,916	69,510
Japan	1,021	709	1,730
Kenya	1,131	659	1,790
Malagasy Rep.	4,488	4,354	8,842
Reunion Island	47,387	48,436	95,823
Seychelles	6,094	8,181	14,275
Singapore	1,186	834	2,020
S. Africa, Rep. of	41,928	39,805	81,733
Switzerland	8,734	8,812	17,546
United Kingdom	54,853	52,444	107,297
U.S.A.	3,043	2,408	5,451
Zimbabwe	911	758	1,669
Other countries	64,728	55,161	119,889
All Countries	465,705	441,266	906,971

¹ Special Administrative Region of China

Table 27 - Tourist arrivals by country of residence, 1998 - 2007

Country of residence	1998	1999	2000	2001	2002	2003	2004	2005	2006	2007
Australia	8,913	8,076	8,771	8,790	8,387	9,103	11,373	13,486	16,660	19,635
Belgium	8,365	9,586	10,998	10,398	10,579	10,170	8,524	8,973	9,216	10,945
France	162,775	175,431	198,423	197,595	202,869	200,229	210,411	220,421	182,295	240,028
Germany	43,826	45,206	52,869	50,866	53,762	53,970	52,277	55,983	57,251	65,165
Hong Kong SAR ¹	969	859	1,227	1,488	1,201	676	836	508	519	649
India	12,629	13,583	17,241	18,890	20,898	25,367	24,716	29,755	37,498	42,974
Italy	36,614	36,675	39,000	37,343	38,263	39,774	41,277	43,458	69,407	69,510
Japan	2,505	2,324	2,389	1,589	1,958	1,572	1,724	1,638	1,695	1,730
Kenya	1,684	1,655	1,801	1,734	1,507	1,510	1,506	1,358	1,694	1,790
Malagasy Rep.	9,213	7,880	7,057	6,674	9,417	11,044	8,256	7,397	7,239	8,842
Reunion Island	83,966	83,749	86,945	91,140	96,375	95,679	96,510	99,036	89,127	95,823
Seychelles	8,529	7,893	9,229	10,687	13,468	9,869	7,456	10,084	12,023	14,275
Singapore	3,515	3,661	4,104	3,431	3,114	2,102	2,329	1,789	1,862	2,020
S. Africa, Rep. of	49,676	46,583	48,683	47,882	42,685	45,756	52,609	58,446	70,796	81,733
Switzerland	16,178	16,281	20,473	18,427	17,371	17,929	16,110	15,773	16,161	17,546
United Kingdom	52,299	58,683	74,488	77,888	80,667	91,210	92,652	95,407	102,333	107,297
USA	3,158	3,345	3,704	3,923	4,116	4,505	4,305	4,890	5,220	5,451
Zimbabwe	3,796	2,606	3,435	3,860	3,185	2,343	2,345	2,419	1,587	1,669
Other countries	49,585	54,009	65,616	67,713	71,826	79,210	83,645	90,242	105,693	119,889
All Countries	558,195	578,085	656,453	660,318	681,648	702,018	718,861	761,063	788,276	906,971

¹ Special Administrative Region of China

Table 28 - Percentage distribution of tourist arrivals by country of residence, 1998 - 2007

Country of residence	1998	1999	2000	2001	2002	2003	2004	2005	2006	2007
Australia	1.6	1.4	1.3	1.3	1.2	1.3	1.6	1.8	2.1	2.2
Belgium	1.5	1.7	1.7	1.6	1.6	1.4	1.2	1.2	1.2	1.2
France	29.2	30.3	30.2	29.9	29.8	28.5	29.3	29.0	23.1	26.5
Germany	7.9	7.8	8.1	7.7	7.9	7.7	7.3	7.4	7.3	7.2
Hong Kong SAR ¹	0.2	0.1	0.2	0.2	0.2	0.1	0.1	0.1	0.1	0.1
India	2.3	2.3	2.6	2.9	3.1	3.6	3.4	3.9	4.8	4.7
Italy	6.6	6.3	5.9	5.7	5.6	5.7	5.7	5.7	8.8	7.7
Japan	0.4	0.4	0.4	0.2	0.3	0.2	0.2	0.2	0.2	0.2
Kenya	0.3	0.3	0.3	0.3	0.2	0.2	0.2	0.2	0.2	0.2
Malagasy Rep.	1.7	1.4	1.1	1.0	1.4	1.6	1.1	1.0	0.9	1.0
Reunion Island	15.0	14.5	13.2	13.8	14.1	13.6	13.4	13.0	11.3	10.6
Seychelles	1.5	1.4	1.4	1.6	2.0	1.4	1.0	1.3	1.5	1.6
Singapore	0.6	0.6	0.6	0.5	0.5	0.3	0.3	0.2	0.2	0.2
S. Africa, Rep. of	8.9	8.1	7.4	7.3	6.3	6.5	7.3	7.7	9.0	9.0
Switzerland	2.9	2.8	3.1	2.8	2.5	2.6	2.2	2.1	2.1	1.9
United Kingdom	9.4	10.2	11.3	11.8	11.8	13.0	12.9	12.5	13.0	11.8
USA	0.6	0.6	0.6	0.6	0.6	0.6	0.6	0.6	0.7	0.6
Zimbabwe	0.7	0.5	0.5	0.6	0.5	0.3	0.3	0.3	0.2	0.2
Other countries	8.9	9.3	10.0	10.3	10.5	11.3	11.6	11.9	13.3	13.2
All Countries	100.0	100.0	100.0	100.0	100.0	100.0	100.0	100.0	100.0	100.0

¹ Special Administrative Region of China

Fig. 5 - Percentage distribution of tourist arrivals by country of residence, 2007

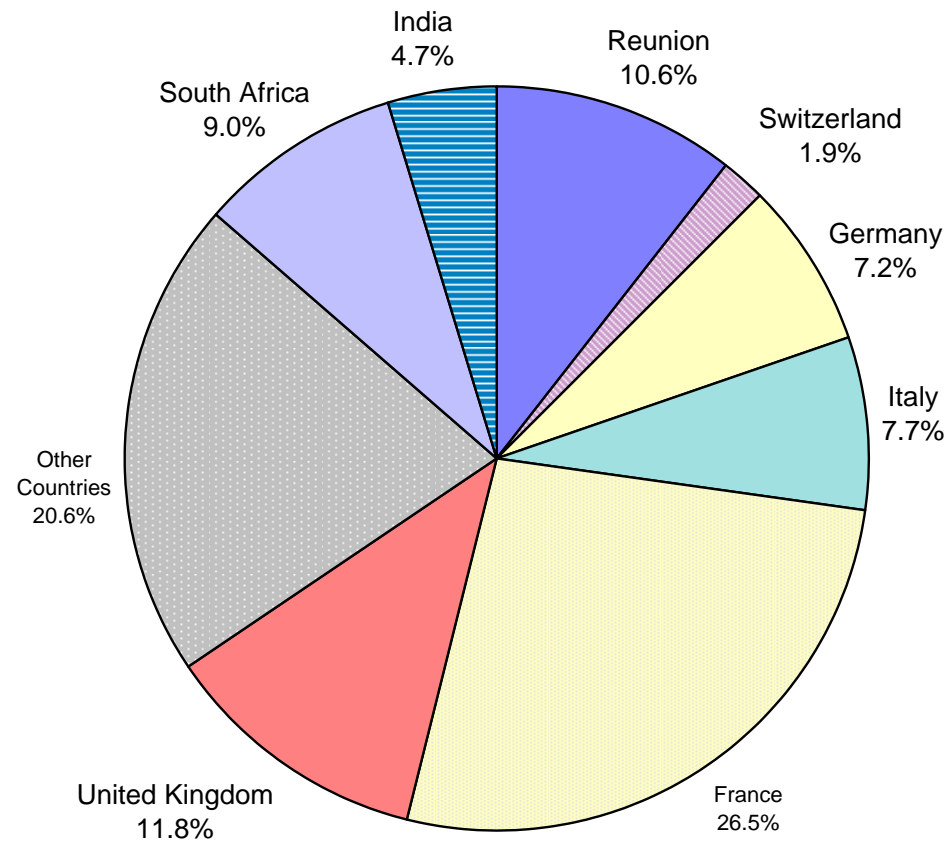


Table 29 - Tourist nights by country of residence, 1998- 2007

Country of residence	1998	1999	2000	2001	2002	2003	2004	2005	2006	2007
Australia	104,284	91,655	96,932	104,232	98,869	100,332	111,546	115,851	126,859	143,482
Belgium	105,146	126,221	132,571	125,752	124,586	121,687	105,445	117,210	120,987	132,145
France	1,632,311	1,719,893	1,934,683	1,966,911	2,020,850	1,996,305	2,101,125	2,208,575	1,931,005	2,542,172
Germany	548,693	553,112	635,600	612,881	651,913	636,435	608,031	655,283	655,738	735,938
Hong Kong SAR ¹	9,559	9,367	9,601	11,955	10,941	6,767	7,984	4,694	3,739	4,788
India	146,872	157,110	188,008	207,965	253,340	287,741	265,174	295,698	336,048	408,128
Italy	346,779	336,271	349,267	326,100	329,809	346,865	362,758	397,160	619,089	600,236
Japan	15,625	12,593	14,054	10,161	11,170	9,302	9,881	10,538	9,889	10,701
Kenya	11,318	12,904	12,585	10,780	8,784	11,347	11,069	12,258	13,875	12,642
Malagasy Rep.	80,310	74,643	65,526	66,177	81,758	128,437	83,961	73,964	84,400	98,034
Reunion Island	588,452	576,423	596,449	632,970	675,483	738,968	832,879	828,889	730,678	917,369
Seychelles	71,407	67,271	82,577	96,303	113,942	92,493	75,277	93,951	108,603	133,595
Singapore	19,627	21,925	21,998	23,420	20,403	14,871	16,094	12,106	14,166	12,200
S. Africa, Rep. of	416,635	412,869	422,300	400,656	376,588	379,561	425,680	467,603	565,627	676,795
Switzerland	209,329	206,392	248,345	229,227	210,510	220,382	189,115	185,482	200,141	207,130
United Kingdom	675,375	720,291	884,799	942,095	977,717	1,043,113	1,053,881	1,070,185	1,152,123	1,141,982
U.S.A.	28,558	31,953	32,719	37,067	38,478	38,795	39,039	41,298	44,827	49,666
Zimbabwe	35,377	28,106	37,555	47,134	39,504	26,469	28,831	31,233	20,493	23,207
Other countries	522,232	570,465	647,307	676,014	724,225	752,443	790,833	876,273	1,022,392	1,136,724
All Countries	5,567,889	5,729,464	6,412,876	6,527,800	6,768,870	6,952,313	7,118,603	7,498,251	7,760,679	8,986,934

¹ Special Administrative Region of China

Fig 6 - Total arrivals and tourist arrivals, 1998 - 2007

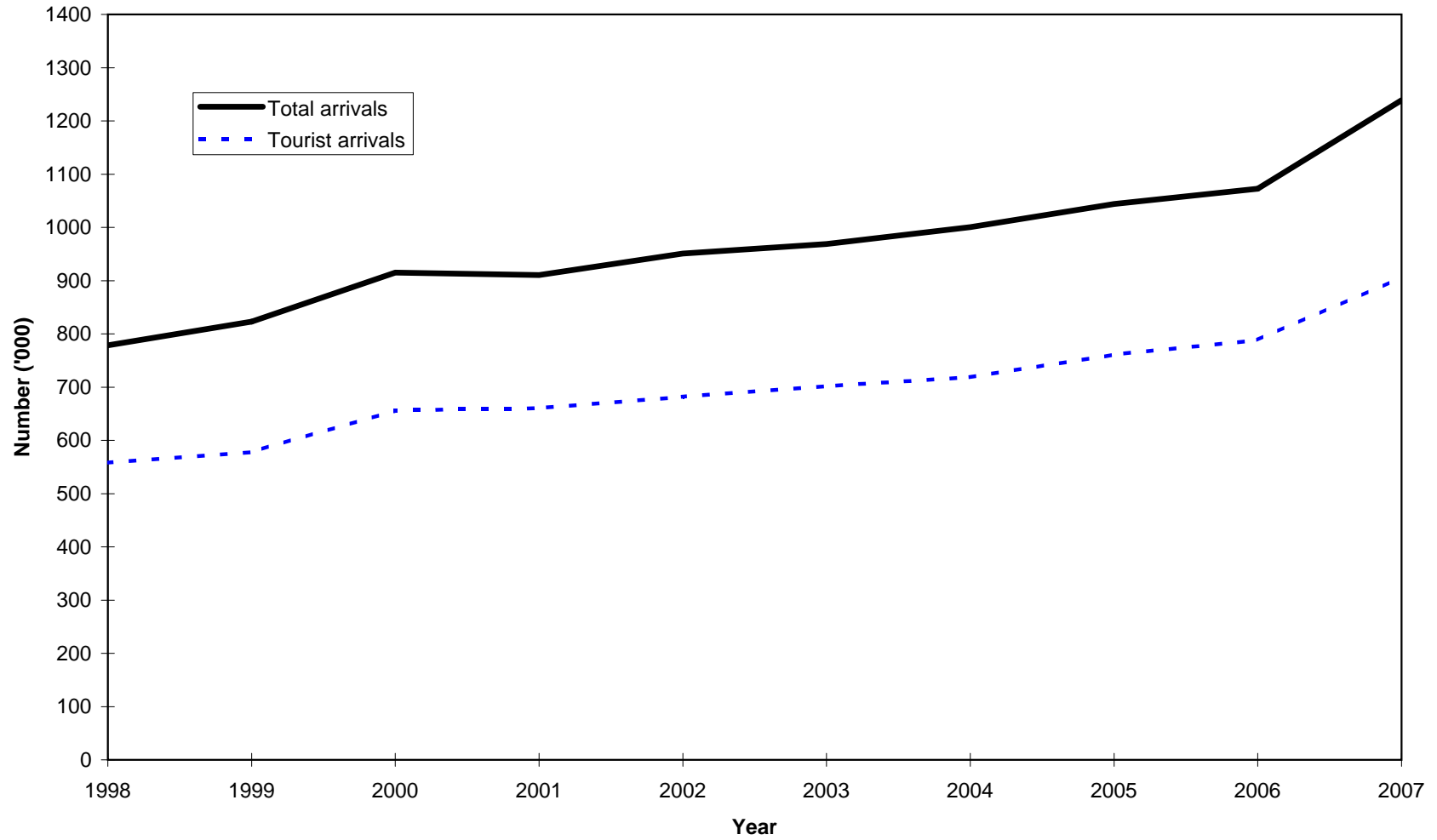


Fig 7 - Tourist nights, 1998 - 2007

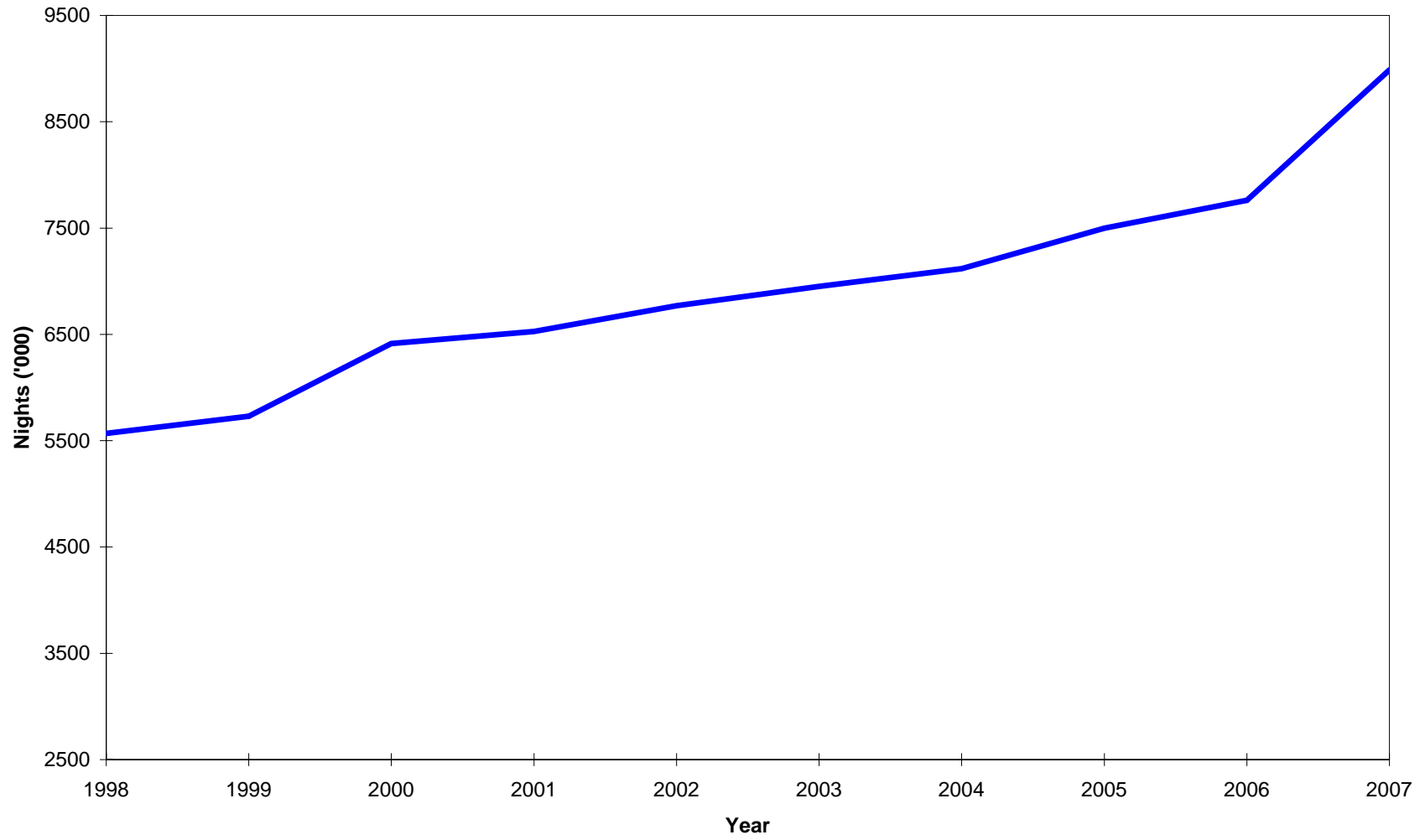


Table 30 - Visitor ¹ arrivals by country of residence and type of passenger, 2005 - 2007

Country of residence	Visitors on holidays			Visitors on business			Visitors in transit			Other visitors			Total visitors		
	2005	2006	2007	2005	2006	2007	2005	2006	2007	2005	2006	2007	2005	2006	2007
Australia	11,314	13,315	16,287	539	855	885	1,845	2,810	2,765	115	143	222	13,813	17,123	20,159
Belgium	8,458	8,650	10,122	278	298	301	201	108	197	150	216	426	9,087	9,272	11,046
France	207,984	169,818	223,773	4,900	4,477	5,297	7,577	7,259	9,404	2,918	3,351	5,453	223,379	184,905	243,927
Germany	54,337	55,029	62,307	532	599	861	1,209	1,078	1,299	640	956	1,223	56,718	57,662	65,690
Hong Kong SAR ²	306	328	368	66	87	108	147	105	178	3	2	8	522	522	662
India	23,234	30,073	35,610	4,103	5,186	4,770	1,721	1,589	2,070	1,088	1,086	1,174	30,146	37,934	43,624
Italy	42,504	67,884	67,204	442	546	672	331	413	764	312	730	1,093	43,589	69,573	69,733
Japan	1,204	1,161	1,270	211	249	169	268	307	329	10	11	20	1,693	1,728	1,788
Kenya	665	915	1,012	475	505	604	160	136	167	63	144	48	1,363	1,700	1,831
Malagasy Rep.	3,693	3,653	4,348	1,081	1,057	1,237	3,279	2,820	4,086	253	396	305	8,306	7,926	9,976
Reunion Island	90,053	79,794	85,380	1,811	1,801	1,877	9,782	10,053	12,817	605	680	700	102,251	92,328	100,774
Seychelles	8,813	10,406	12,464	331	384	460	779	892	1,238	404	610	422	10,327	12,292	14,584
Singapore	1,313	1,465	1,502	301	296	317	172	80	218	20	36	49	1,806	1,877	2,086
S. Africa Rep. of	51,321	62,737	72,938	5,117	5,587	5,420	1,492	1,902	2,406	902	1,037	1,441	58,832	71,263	82,205
Switzerland	15,349	15,588	16,671	204	224	230	333	347	771	61	132	215	15,947	16,291	17,887
United Kingdom	91,056	97,461	100,726	2,322	2,826	2,806	1,053	1,384	1,879	1,316	1,054	2,595	95,747	102,725	108,006
U.S.A.	3,769	4,099	4,400	796	756	638	495	404	457	71	138	117	5,131	5,397	5,612
Zimbabwe	2,112	1,259	1,278	248	231	251	31	50	83	41	63	75	2,432	1,603	1,687
Other & N. Stated	74,599	88,985	101,054	6,407	6,547	7,730	17,424	16,229	20,058	2,053	2,770	2,663	100,483	114,531	131,505
All Countries	692,084	712,620	818,714	30,164	32,511	34,633	48,299	47,966	61,186	11,025	13,555	18,249	781,572	806,652	932,782

¹ Visitors include tourists, cruise ship passengers and non-residents who stay in the country for less than a day, other than those who do not leave the airport

² Special Administrative Region of China

Table 31 - Visitor arrivals by age and sex, 2006 & 2007

Age (years)	2006			2007		
	Both Sexes	Male	Female	Both Sexes	Male	Female
Under 1	4,433	2,255	2,178	5,548	2,768	2,780
1 - 4	25,501	12,806	12,695	31,019	15,592	15,427
5 - 9	34,855	17,653	17,202	41,817	21,179	20,638
10 - 14	34,587	17,371	17,216	40,076	20,263	19,813
15 - 19	28,596	13,475	15,121	31,585	14,672	16,913
20 - 24	39,604	15,570	24,034	44,302	17,291	27,011
25 - 29	89,803	40,535	49,268	102,414	46,339	56,075
30 - 34	99,028	50,925	48,103	109,556	56,442	53,114
35 - 39	90,403	48,590	41,813	103,633	55,723	47,910
40 - 44	84,009	45,804	38,205	96,845	52,794	44,051
45 - 49	73,360	39,607	33,753	85,548	45,969	39,579
50 - 54	63,077	34,437	28,640	74,175	40,349	33,826
55 - 59	53,325	29,097	24,228	62,439	34,157	28,282
60 - 64	36,596	20,006	16,590	45,417	24,660	20,757
65 - 69	21,967	12,302	9,665	26,378	14,807	11,571
70 & over	19,700	10,728	8,972	23,384	12,563	10,821
Not stated	7,808	4,296	3,512	8,646	4,754	3,892
All ages	806,652	415,457	391,195	932,782	480,322	452,460

Table 32 - Visitor arrivals by duration of stay, 2006 & 2007

Duration of stay	2006		2007	
	Number	Percentage	Number	Percentage
Less than 1 day	18,376	2.3	25,811	2.8
1 day	25,630	3.2	30,973	3.3
2 days	17,964	2.2	20,722	2.2
3 days	27,767	3.4	32,067	3.4
4 days	38,112	4.7	46,233	5.0
5 days	39,150	4.9	44,583	4.8
6 days	66,099	8.2	71,085	7.6
7 days	162,912	20.2	204,253	21.9
8 days	39,172	4.9	45,594	4.9
9 days	42,786	5.3	50,663	5.4
10 days	45,062	5.6	53,671	5.8
11 days	23,307	2.9	27,696	3.0
12 days	24,120	3.0	27,471	2.9
13 days	35,106	4.4	40,673	4.4
14 days	71,727	8.9	79,412	8.5
15 days	8,217	1.0	10,269	1.1
16 days	6,017	0.7	6,897	0.7
17 days	3,852	0.5	5,150	0.6
18 days	3,332	0.4	4,287	0.5
19 days	3,903	0.5	4,293	0.5
20 - 24 days	17,056	2.1	20,598	2.2
25 - 29 days	8,239	1.0	10,227	1.1
1 month - under 2 months	13,018	1.6	15,269	1.6
2 months - under 3 months	62,895	7.8	50,571	5.4
3 months and over	2,833	0.4	4,314	0.5
All Countries	806,652	100.0	932,782	100.0

Table 33 - Visitor arrivals by country of residence and duration of stay, 2007

Country of residence	Duration of stay (Nights)												
	<1	1 - 2	3 - 4	5 - 6	7 - 8	9 - 10	11 - 12	13 - 14	15 - 19	20 - 24	25 - 29	30+	Total
Australia	524	3,872	3,087	4,411	1,452	2,043	285	1,855	383	515	251	1,481	20,159
Belgium	101	236	531	923	2,607	1,633	788	1,211	424	401	291	1,900	11,046
France	3,899	9,312	16,088	25,166	74,761	31,853	14,762	23,141	9,128	5,797	3,719	26,301	243,927
Germany	525	1,240	1,893	3,824	10,168	6,483	5,688	26,412	3,230	3,395	687	2,145	65,690
Hong Kong SAR ¹	13	193	91	143	36	52	7	30	21	8	6	62	662
India	650	2,660	10,148	13,198	7,563	1,005	617	808	444	397	375	5,759	43,624
Italy	223	860	1,060	9,555	36,861	4,256	2,310	10,153	986	759	367	2,343	69,733
Japan	58	370	390	570	155	87	14	20	15	15	7	87	1,788
Kenya	41	307	530	222	351	112	60	51	20	18	12	107	1,831
Malagasy Rep.	1,134	2,918	1,258	735	835	433	256	311	259	174	168	1,495	9,976
Reunion Island	4,951	11,638	14,038	18,461	26,281	7,816	3,782	3,076	2,949	1,140	788	5,854	100,774
Seychelles	309	1,696	3,100	1,209	3,030	1,151	1,201	712	482	201	143	1,350	14,584
Singapore	66	310	524	726	139	95	27	55	35	20	10	79	2,086
S. Africa Rep. of	472	3,874	9,018	9,871	34,801	10,526	3,100	3,235	1,872	866	426	4,144	82,205
Switzerland	341	593	471	2,260	2,225	1,447	1,000	5,769	639	1,095	395	1,652	17,887
United Kingdom	709	3,399	4,374	7,231	19,235	19,917	12,185	24,588	5,563	3,173	1,401	6,231	108,006
U.S.A.	161	537	975	1,081	969	458	200	212	191	118	67	643	5,612
Zimbabwe	18	118	175	219	286	171	101	188	93	55	30	233	1,687
Other & not stated	11,616	7,562	10,549	15,863	28,092	14,796	8,784	18,258	4,162	2,451	1,084	8,288	131,505
All Countries	25,811	51,695	78,300	115,668	249,847	104,334	55,167	120,085	30,896	20,598	10,227	70,154	932,782

¹ Special Administrative Region of China

Table 34 - Visitor arrivals and average length of stay by country of residence, 2007

Country of Residence	Visitor arrivals	Average length of stay (nights)
Australia	20,159	8.3
Belgium	11,046	13.2
France	243,927	11.0
Germany	65,690	12.4
Hong Kong SAR ¹	662	7.4
India	43,624	9.6
Italy	69,733	9.2
Japan	1,788	6.4
Kenya	1,831	7.6
Malagasy Rep.	9,976	10.3
Reunion	100,774	8.2
Seychelles	14,584	9.5
Singapore	2,086	7.1
S. Africa, Rep. of	82,205	8.7
Switzerland	17,887	12.6
United Kingdom	108,006	11.7
U.S.A.	5,612	9.7
Zimbabwe	1,687	14.6
Other & not stated	131,505	10.6
All Countries	932,782	10.3

¹ Special Administrative Region of China

Table 35 - Gross earnings from tourism, 1998 - 2007

Earnings (Rs Mn)	1998	1999	2000	2001	2002	2003	2004	2005	2006	2007
	11,890	13,668	14,234	18,166	18,328	19,415	23,448	25,704	31,942	40,687

Source : Bank of Mauritius

Table 36 - Expenditure of tourists by country of residence, 1998 - 2006

Country of residence	Expenditure (Rs Mn)				
	1998	2000	2002	2004	2006
France	3,173.1	3,785.7	5,188.2	6,928.4	7,620.7
Germany	1,195.9	1,447.3	1,852.9	2,084.0	2,684.3
Italy	827.9	918.3	1,215.0	1,389.9	2,920.4
Switzerland	473.3	615.7	662.6	692.2	871.7
United Kingdom	1,680.2	2,708.2	3,269.9	4,216.5	5,533.9
Malagasy Rep.	108.4	90.3	141.5	136.6	124.0
Reunion	855.4	871.4	1,242.5	1,575.8	1,908.4
South Africa, Rep. of	808.8	780.6	778.2	1,363.2	2,387.2
Singapore	62.5	94.5	68.6	50.4	69.2
Other countries	2,578.4	2,875.3	3,355.3	4,679.5	7,078.6
All Countries	11,763.9	14,187.3	17,774.7	23,116.5	31,198.4

Source: Survey of Outgoing Tourists conducted by the Ministry of Tourism, Leisure & External Communications every two years.

Table 37 - Expenditure of tourists by type of expenditure, 1998 - 2006

Type of expenditure	Expenditure (Rs Mn)				
	1998	2000	2002	2004	2006
Accommodation	6,415	7,479	9,155	12,231	16,862
Meals & Beverages	1,818	2,470	3,327	4,203	5,427
Transport	804	941	1,232	1,339	1,902
Entertainment	685	839	986	1,353	1,815
Shopping	1,691	2,002	2,450	3,010	3,954
Other	351	457	624	981	1,238
Total	11,764	14,187	17,775	23,117	31,198

Source: Survey of Outgoing Tourists conducted by the Ministry of Tourism, Leisure & External Communications every two years.

Table 38 - Hotels, rooms and bedplaces, 1998- 2007

Year	No. of hotels	No. of rooms	No. of bedplaces
1998	90	7,267	14,995
1999	92	8,255	16,947
2000	95	8,657	17,776
2001	95	9,024	18,350
2002	95	9,623	19,597
2003	97	9,647	19,727
2004	103	10,640	21,355
2005	99	10,497	21,072
2006	98	10,666	21,403
2007	97 ¹	10,857	21,788

¹ *Excluding five hotels not operational because of renovation works*

Table 39 - Monthly occupancy rates in large ¹ hotels, 2003 - 2007

Month	2003		2004		2005		2006		2007	
	Room	Bed	Room	Bed	Room	Bed	Room	Bed	Room	Bed
January	69	61	72	64	77	69	86	77	89	79
February	69	61	68	60	70	63	81	72	86	77
March	66	58	70	62	68	61	63	56	81	72
April	67	59	67	59	59	53	61	55	80	72
May	64	56	62	55	58	52	54	48	74	67
June	50	44	48	43	45	41	47	42	62	56
July	54	48	55	49	56	50	58	52	74	67
August	64	56	62	56	67	60	73	66	77	70
September	67	59	69	62	67	60	71	63	78	70
October	72	64	75	67	73	65	76	68	81	72
November	74	65	78	70	83	74	81	73	85	77
December	70	62	72	64	78	70	81	73	80	72
Whole Year	66	58	66	59	66	59	69	62	78	70

¹ Large Hotels are well established beach hotels of over 80 rooms

Room Occupancy Rate = $\frac{\text{Total number of room nights rented} \times 100}{\text{Total number of room nights available}}$

Bed Occupancy Rate = $\frac{\text{Total number of bed nights rented} \times 100}{\text{Total number of bed nights available}}$

Table 40 - Monthly occupancy rates in all hotels, 2003 - 2007

Month	2003		2004		2005		2006		2007	
	Room	Bed	Room	Bed	Room	Bed	Room	Bed	Room	Bed
January	68	59	69	61	73	66	81	72	86	77
February	66	58	64	57	65	59	76	68	82	73
March	63	56	66	58	64	57	60	54	77	69
April	63	55	63	56	56	50	58	52	75	67
May	62	55	59	52	55	49	51	46	71	64
June	49	43	47	41	45	40	45	41	59	53
July	53	47	52	47	54	49	56	50	71	63
August	61	54	58	52	64	57	69	62	74	67
September	63	55	64	57	63	57	67	60	75	67
October	68	60	70	63	68	61	73	65	78	70
November	70	61	74	66	78	70	78	70	83	74
December	68	60	68	61	74	66	79	71	80	72
Whole Year	63	55	63	56	63	57	66	59	76	68

Room Occupancy Rate = $\frac{\text{Total number of room nights rented} \times 100}{\text{Total number of room nights available}}$

Bed Occupancy Rate = $\frac{\text{Total number of bed nights rented} \times 100}{\text{Total number of bed nights available}}$

APPENDIX 2

GOOD BYE / AU REVOIR

Embarkation Card / Fiche D'Embarquement (Regulation 23 of the Passports Regulations 1969)

Flight number/Numéro de vol.....

Family name/Nom.....

First name(s)/Prénom(s).....

Gender/Genre : Male/Female*

Date and Country of birth / Date et Pays de naissance

...../...../.....

Nationality/Nationalité.....

Occupation/Profession.....

Permanent address/Adresse permanente.....

Passport Number/Numéro du Passeport.....

Date of issue/Date de délivrance.....

Issuing State/Autorité ayant délivré le passeport.....

Final destination/Destination finale.....

Date of departure / Date de départ.....

DECLARATION

The information I have given is true and complete. I understand that I shall commit an offence if I fail to fill in the card or knowingly give false information.

Je déclare qu'à ma connaissance tous les renseignements que j'ai fournis sont exacts et complets. Je suis conscient que le fait de ne pas remplir cette fiche ou toute fausse déclaration de ma part pourrait entraîner des poursuites pénales.

Signature..... Date.....

* Delete whichever is inapplicable / Rayez la mention inutile