

SECTION 2

VITAL STATISTICS

Table 2.1 - Vital statistics by district and sex - Republic of Mauritius ^{1/}, 2004

Geographical District	Live births			Deaths			Infant deaths			Still births		
	Both sexes	Male	Female	Both sexes	Male	Female	Both sexes	Male	Female	Both sexes	Male	Female
Port Louis	2,239	1,173	1,066	1,107	602	505	40	25	15	27	14	13
Pamplemousses	2,071	1,048	1,023	843	463	380	34	15	19	18	8	10
Riviere du Rempart	1,743	908	835	639	381	258	31	15	16	14	9	5
Flacq	2,237	1,151	1,086	829	490	339	28	15	13	30	17	13
Grand Port	1,701	847	854	750	402	348	29	18	11	16	11	5
Savanne	1,079	548	531	451	239	212	19	9	10	4	3	1
Plaines Wilhems	4,897	2,486	2,411	2,763	1,529	1,234	48	31	17	42	23	19
Moka	1,143	577	566	498	267	231	17	8	9	8	6	2
Black River	1,175	580	595	379	234	145	10	8	2	8	6	2
Island of Mauritius	18,285	9,318	8,967	8,259	4,607	3,652	256	144	112	167	97	70
Island of Rodrigues	945	471	474	216	109	107	21	13	8	24	17	7
Republic of Mauritius	19,230	9,789	9,441	8,475	4,716	3,759	277	157	120	191	114	77

1/ excluding Agalega and St. Brandon

Table 2.2(a) - Population and vital statistics - Republic of Mauritius ^{1/}, 1969 - 2004

Year	Population at mid-year	Live Births	Deaths	Infant deaths	Still Births	Civil marriages	Divorces*
1969	815,327	22,621	6,733	1,628	988	4,055	133
1970	828,922	22,766	6,520	1,312	892	4,651	126
1971	840,602	21,926	6,436	1,146	882	4,478	179
1972	850,968	21,495	6,753	1,399	749	5,214	136
1973	869,334	20,015	6,779	1,277	701	5,679	147
1974	880,650	24,002	6,424	1,113	879	6,905	117
1975	892,045	22,557	7,201	1,130	932	7,069	110
1976	903,610	23,274	6,968	936	808	8,451	98
1977	918,005	23,859	7,154	1,087	742	8,632	197
1978	933,499	25,278	6,596	876	680	10,741	255
1979	949,888	26,163	6,871	891	668	9,327	265
1980	966,039	26,294	6,919	864	662	8,894	351
1981	980,462	24,967	6,653	884	590	8,406	305
1982	992,521	22,459	6,584	682	458	10,768	312
1983	1,001,691	21,073	6,532	570	403	10,255	361
1984	1,012,221	20,332	6,646	505	404	10,865	471
1985	1,020,528	19,376	6,906	487	383	11,245	460
1986	1,028,360	19,170	6,805	524	365	10,556	616
1987	1,036,082	20,033	6,753	504	363	11,392	842
1988	1,043,239	20,941	6,879	471	374	11,453	740
1989	1,051,260	21,822	7,149	498	415	11,197	711
1990	1,058,775	22,602	7,031	462	365	11,425	549
1991	1,070,266	22,197	7,027	413	400	11,295	707
1992	1,084,441	22,902	7,023	426	291	11,408	781
1993	1,097,374	22,329	7,433	438	337	11,576	762
1994	1,112,846	21,795	7,402	394	274	11,414	733
1995	1,122,457	20,549	7,465	404	299	10,624	801
1996	1,133,996	20,763	7,670	459	266	10,700	792
1997	1,148,284	20,012	7,986	406	257	10,887	891
1998	1,160,421	19,434	7,839	376	227	10,898	1,012
1999	1,175,267	20,311	7,944	396	226	11,295	1,150
2000	1,186,873	20,205	7,982	322	266	10,963	1,191
2001	1,199,881	19,696	7,983	282	244	10,635	1,512
2002	1,210,196	19,983	8,310	297	203	10,484	1,291
2003	1,222,811	19,343	8,520	250	220	10,812	1,190
2004	1,233,386	19,230	8,475	277	191	11,385	1,162

1/ excluding Agalega & Saint Brandon

* Source : Judicial Department

Note: The increase in the number of civil marriages as from 1982 is due largely to improved registration of religious marriages with the coming into force of a new Civil Status Act as from January 1982.

Table 2.2(b) - Population and vital statistics - Island of Mauritius, 1963 - 2004

Period	Population at mid-period	Live births	Deaths	Infant deaths	Still births	Civil marriages
1963	695,641	27,978	6,709	1,660	1,519	3,472
1964	716,298	27,528	6,184	1,561	1,611	3,965
1965	735,245	26,279	6,337	1,685	1,557	3,976
1966	753,276	26,817	6,701	1,721	1,384	4,157
1967	767,782	23,499	6,543	1,656	1,074	3,949
1968	781,615	24,413	7,126	1,688	1,110	3,974
1969	792,893	21,719	6,428	1,528	951	3,882
1970	805,489	21,623	6,309	1,232	857	4,499
1971	816,561	20,834	6,248	1,077	842	4,346
1972	826,199	20,496	6,506	1,308	718	5,082
1973	846,089	18,974	6,525	1,201	678	5,533
1974	857,063	22,938	6,221	1,045	854	6,771
1975	867,824	21,492	6,967	1,046	896	6,888
1976	879,193	22,250	6,815	900	784	8,262
1977	893,069	22,730	6,966	1,023	712	8,421
1978	907,779	24,250	6,400	823	653	10,532
1979	922,807	25,056	6,625	824	650	9,080
1980	937,886	24,983	6,685	808	623	8,629
1981	950,785	23,670	6,404	795	553	8,169
1982	960,994	21,247	6,385	624	438	10,597
1983	968,609	19,948	6,322	511	379	10,067
1984	978,658	19,222	6,417	444	388	10,638
1985	986,520	18,520	6,691	441	368	11,088
1986	994,319	18,225	6,622	480	342	10,337
1987	1,001,607	19,151	6,581	463	344	11,201
1988	1,009,332	20,057	6,699	441	351	11,283
1989	1,017,307	20,955	6,946	452	399	11,040
1990	1,024,571	21,799	6,854	434	348	11,252
1991	1,035,936	21,436	6,815	388	386	11,146
1992	1,049,988	22,170	6,866	408	286	11,246
1993	1,062,855	21,667	7,275	424	333	11,383
1994	1,078,148	21,050	7,234	379	271	11,212
1995	1,087,636	19,824	7,298	388	297	10,430
1996	1,099,057	20,049	7,508	445	264	10,502
1997	1,113,144	19,331	7,798	393	253	10,654
1998	1,125,118	18,744	7,651	364	221	10,650
1999	1,139,718	19,543	7,791	375	219	11,072
2000	1,151,094	19,398	7,806	306	263	10,720
2001	1,163,875	18,884	7,761	263	234	10,414
2002	1,174,021	19,169	8,081	278	197	10,253
2003	1,186,363	18,518	8,310	230	205	10,556
2004	1,196,696	18,285	8,259	256	167	11,138

Note: The increase in the number of civil marriages as from 1982 is due largely to improved registration of religious marriages with the coming into force of a new Civil Status Act as from January 1982.

Table 2.2(c) - Population and vital statistics - Island of Rodrigues, 1969 - 2004

Year	Population at mid-year	Live births	Deaths	Infant deaths	Still births	Civil marriages
1969	22,434	902	305	110	37	173
1970	23,433	1,143	211	80	35	152
1971	24,041	1,092	188	69	40	132
1972	24,769	999	247	91	31	132
1973	23,245	1,041	254	76	23	146
1974	23,587	1,064	203	68	25	134
1975	24,221	1,065	234	84	36	181
1976	24,417	1,024	153	36	24	189
1977	24,936	1,129	188	64	30	211
1978	25,720	1,028	196	53	27	209
1979	27,081	1,107	246	67	18	247
1980	28,153	1,311	234	56	39	265
1981	29,677	1,297	249	89	37	237
1982	31,527	1,212	199	58	20	171
1983	33,082	1,125	210	59	24	188
1984	33,563	1,110	229	61	16	227
1985	34,008	856	215	46	15	157
1986	34,041	945	183	44	23	219
1987	34,475	882	172	41	19	191
1988	33,907	884	180	30	23	170
1989	33,953	867	203	46	16	157
1990	34,204	803	177	28	17	173
1991	34,330	761	212	25	14	149
1992	34,453	732	157	18	5	162
1993	34,519	662	158	14	4	193
1994	34,698	745	168	15	3	202
1995	34,821	725	167	16	2	194
1996	34,939	714	162	14	2	198
1997	35,140	681	188	13	4	233
1998	35,303	690	188	12	6	248
1999	35,549	768	153	21	7	223
2000	35,779	807	176	16	3	243
2001	36,006	812	222	19	10	221
2002	36,175	814	229	19	6	231
2003	36,448	825	210	20	15	256
2004	36,690	945	216	21	24	247

Table 2.3(a) - Population and vital statistics rates - Republic of Mauritius ^{1/}, 1969 - 2004

Year	Population at mid-year	Crude birth rate	Crude death rate	Infant mortality rate	Still birth rate	Marriage rate	Divorce rate
1969	815,327	27.7	8.3	72.0	41.8	9.9	0.3
1970	828,922	27.5	7.9	57.6	37.7	11.2	0.3
1971	840,602	26.1	7.7	52.3	38.7	10.7	0.4
1972	850,968	25.3	7.9	65.1	33.7	12.3	0.3
1973	869,334	23.0	7.8	63.8	33.8	13.1	0.3
1974	880,650	27.3	7.3	46.4	35.3	15.7	0.3
1975	892,045	25.3	8.1	50.1	39.7	15.8	0.2
1976	903,610	25.8	7.7	40.2	33.6	18.7	0.2
1977	918,005	26.0	7.8	45.6	30.2	18.8	0.4
1978	933,499	27.1	7.1	34.7	26.2	23.0	0.5
1979	949,888	27.5	7.2	34.1	24.9	19.6	0.6
1980	966,039	27.2	7.2	32.9	24.6	18.4	0.7
1981	980,462	25.5	6.8	35.4	23.1	17.1	0.6
1982	992,521	22.6	6.6	30.4	20.0	21.7	0.6
1983	1,001,691	21.0	6.5	27.0	18.8	20.5	0.7
1984	1,012,221	20.1	6.6	24.8	19.5	21.5	0.9
1985	1,020,528	19.0	6.8	25.1	19.4	22.0	0.9
1986	1,028,360	18.6	6.6	27.3	18.7	20.5	1.2
1987	1,036,082	19.3	6.5	25.2	17.8	22.0	1.6
1988	1,043,239	20.1	6.6	22.5	17.5	22.0	1.4
1989	1,051,260	20.8	6.8	22.8	18.7	21.3	1.4
1990	1,058,775	21.3	6.6	20.4	15.9	21.6	1.0
1991	1,070,266	20.7	6.6	18.6	17.7	21.1	1.3
1992	1,084,441	21.1	6.5	18.6	12.5	21.0	1.4
1993	1,097,374	20.3	6.8	19.6	14.9	21.1	1.4
1994	1,112,846	19.6	6.7	18.1	12.4	20.5	1.3
1995	1,122,457	18.3	6.7	19.7	14.3	18.9	1.4
1996	1,133,996	18.3	6.8	22.1	12.6	18.9	1.4
1997	1,148,284	17.4	7.0	20.3	12.7	19.0	1.6
1998	1,160,421	16.7	6.8	19.3	11.5	18.8	1.7
1999	1,175,267	17.3	6.8	19.5	11.0	19.2	2.0
2000	1,186,873	17.0	6.7	15.9	13.0	18.5	2.0
2001	1,199,881	16.4	6.7	14.3	12.2	17.7	2.5
2002	1,210,196	16.5	6.9	14.9	10.1	17.3	2.1
2003	1,222,811	15.8	7.0	12.9	11.2	17.7	1.9
2004	1,233,386	15.6	6.9	14.4	9.8	18.5	1.9

1/ excluding Agalega and Saint Brandon

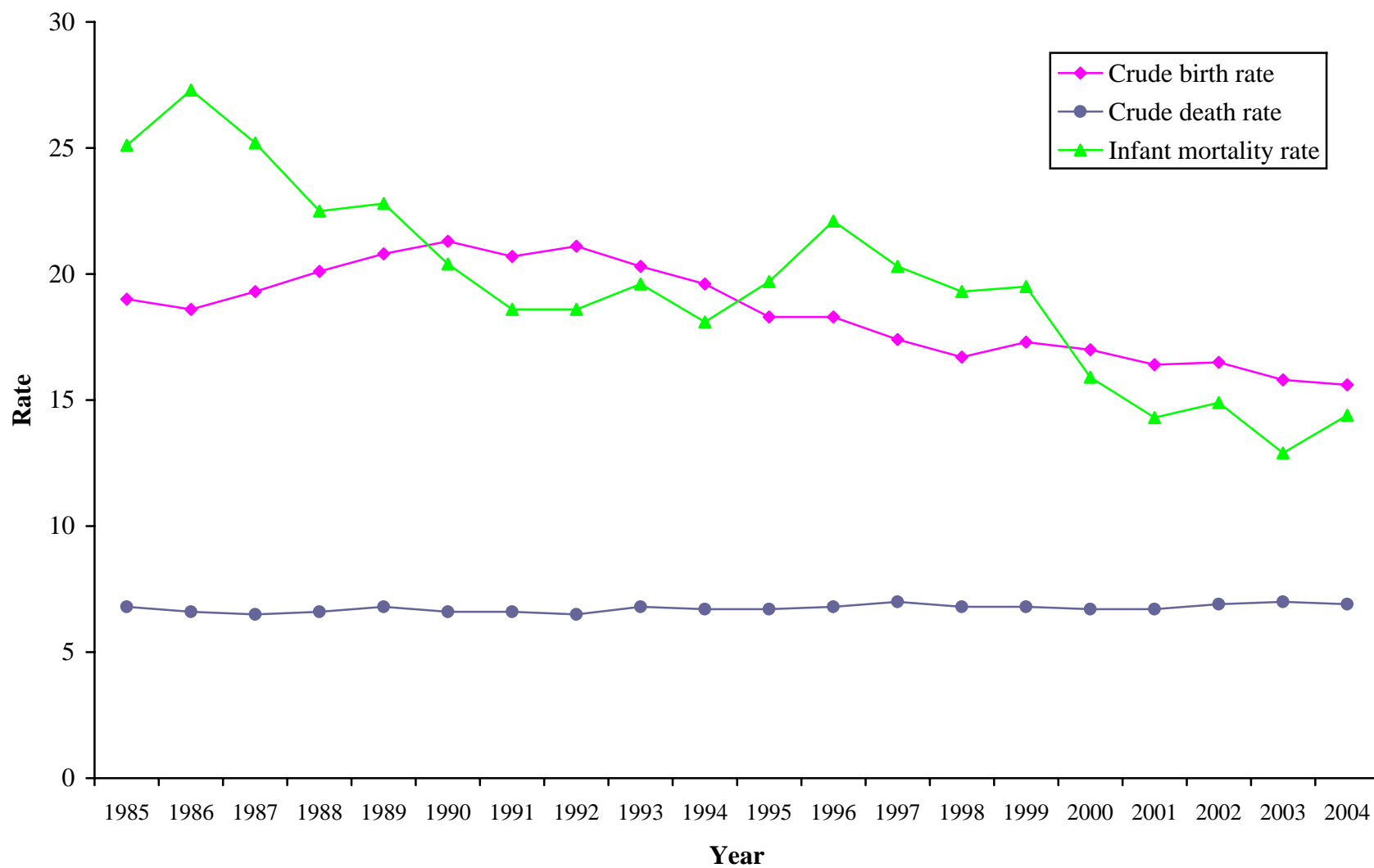
Figure 4 - Selected vital rates - Republic of Mauritius, 1985 - 2004

Table 2.3(b) - Population and vital statistics rates - Island of Mauritius, 1963 - 2004

Period	Population at mid-period	Crude birth rate	Crude death rate	Infant mortality rate	Still birth rate	Marriage rate
1963	695,641	40.2	9.6	59.3	51.5	10.0
1964	716,298	38.4	8.6	56.7	55.3	11.1
1965	735,245	35.7	8.6	64.1	55.9	10.8
1966	753,276	35.6	8.9	64.2	49.1	11.0
1967	767,782	30.6	8.5	70.5	43.7	10.3
1968	781,615	31.2	9.1	69.1	43.5	10.2
1969	792,893	27.4	8.1	70.4	41.9	9.8
1970	805,489	26.8	7.8	57.0	38.1	11.2
1971	816,561	25.5	7.7	51.7	38.8	10.6
1972	826,199	24.8	7.9	63.8	33.8	12.3
1973	846,089	22.4	7.7	63.3	34.5	13.1
1974	857,063	26.8	7.3	45.6	35.9	15.8
1975	867,824	24.8	8.0	48.7	40.0	15.9
1976	879,193	25.3	7.8	40.4	34.0	18.8
1977	893,069	25.5	7.8	45.0	30.4	18.9
1978	907,779	26.7	7.1	33.9	26.2	23.2
1979	922,807	27.2	7.2	32.9	25.3	19.7
1980	937,886	26.6	7.1	32.3	24.3	18.4
1981	950,785	24.9	6.7	33.6	22.8	17.2
1982	960,994	22.1	6.6	29.4	20.2	22.1
1983	968,609	20.6	6.5	25.6	18.6	20.8
1984	978,658	19.6	6.6	23.1	19.8	21.7
1985	986,520	18.8	6.8	23.8	19.5	22.5
1986	994,319	18.3	6.7	26.3	18.4	20.8
1987	1,001,607	19.1	6.6	24.2	17.6	22.4
1988	1,009,332	19.9	6.6	22.0	17.2	22.4
1989	1,017,307	20.6	6.8	21.6	18.7	21.7
1990	1,024,571	21.3	6.7	19.9	15.7	22.0
1991	1,035,936	20.7	6.6	18.1	17.7	21.5
1992	1,049,988	21.1	6.5	18.4	12.7	21.4
1993	1,062,855	20.4	6.8	19.6	15.1	21.4
1994	1,078,148	19.5	6.7	18.0	12.7	20.8
1995	1,087,636	18.2	6.7	19.6	14.8	19.2
1996	1,099,057	18.2	6.8	22.2	13.0	19.1
1997	1,113,144	17.4	7.0	20.3	12.9	19.1
1998	1,125,118	16.7	6.8	19.4	11.7	18.9
1999	1,139,718	17.1	6.8	19.2	11.1	19.4
2000	1,151,094	16.9	6.8	15.8	13.4	18.6
2001	1,163,875	16.2	6.7	13.9	12.2	17.9
2002	1,174,021	16.3	6.9	14.5	10.2	17.5
2003	1,186,363	15.6	7.0	12.4	10.9	17.8
2004	1,196,696	15.3	6.9	14.0	9.1	18.6

Table 2.3(c) - Population and vital statistics rates ^{1/} - Island of Rodrigues, 1969 - 2004

Year	Population at mid-year	Crude birth rate	Crude death rate	Infant mortality rate	Still birth rate	Marriage rate
1969	22,434	45.2	11.5	96.0	32.5	14.0
1970	23,433	44.6	10.0	82.6	34.5	13.0
1971	24,041	44.8	9.0	74.2	31.7	11.5
1972	24,769	42.1	9.3	75.4	29.1	11.0
1973	23,245	44.5	10.1	75.7	24.8	11.8
1974	23,587	44.8	9.8	71.9	25.8	13.0
1975	24,221	43.4	8.1	59.6	26.3	13.9
1976	24,417	43.9	7.8	57.2	27.2	15.9
1977	24,936	42.5	7.2	48.1	24.8	16.3
1978	25,720	42.3	8.2	56.4	22.5	17.3
1979	27,081	42.4	8.3	51.1	23.8	17.7
1980	28,153	44.0	8.6	57.1	24.7	17.7
1981	29,677	42.9	7.7	53.1	24.5	15.1
1982	31,527	38.4	7.0	56.7	21.8	12.6
1983	33,082	34.7	6.4	51.6	17.1	11.8
1984	33,563	30.7	6.5	53.7	17.5	11.3
1985	34,008	28.5	6.1	51.9	18.2	11.8
1986	34,041	26.3	5.6	48.8	20.8	11.1
1987	34,475	26.2	5.2	42.4	23.4	11.2
1988	33,907	25.9	5.5	44.4	21.6	10.2
1989	33,953	25.1	5.5	40.7	21.5	9.8
1990	34,204	23.7	5.8	40.7	19.0	9.3
1991	34,330	22.3	5.3	30.9	15.4	9.4
1992	34,453	20.8	5.1	26.5	10.6	9.8
1993	34,519	20.7	4.7	22.0	5.6	10.8
1994	34,698	20.5	4.7	21.1	4.2	11.3
1995	34,821	20.9	4.8	20.6	3.2	11.4
1996	34,939	20.2	4.9	20.3	3.8	11.9
1997	35,140	19.8	5.1	18.7	5.7	12.9
1998	35,303	20.2	5.0	21.5	7.9	13.3
1999	35,549	21.2	4.8	21.6	7.0	13.4
2000	35,779	22.2	5.1	23.5	8.3	12.8
2001	36,006	22.5	5.8	22.6	7.7	12.9
2002	36,175	22.6	6.1	23.7	12.5	13.0
2003	36,448	23.6	6.0	23.2	17.1	13.4
2004 ^{2/}	36,690	25.8	5.9	22.2	24.8	13.5

1/ because of the small number of vital events, the rates have been calculated by taking the average for three years in order to remove wide fluctuations in the yearly data.

2/ for the year 2003 only

Table 2.4(a) - Registered vital statistics by sex - Republic of Mauritius ^{1/}, 1985 - 2004

Year	Live births			Deaths			Infant deaths			Still births		
	Both sexes	Male	Female	Both sexes	Male	Female	Both sexes	Male	Female	Both sexes	Male	Female
1985	19,376	9,789	9,587	6,906	3,986	2,920	487	272	215	383	191	192
1986	19,170	9,927	9,243	6,805	3,823	2,982	524	302	222	365	206	159
1987	20,033	10,119	9,914	6,753	3,844	2,909	504	298	206	363	196	167
1988	20,941	10,590	10,351	6,879	3,986	2,893	471	281	190	374	199	175
1989	21,822	11,182	10,640	7,149	4,141	3,008	498	291	207	415	218	197
1990	22,602	11,543	11,059	7,031	4,092	2,939	462	269	193	365	204	161
1991	22,197	11,354	10,843	7,027	4,036	2,991	413	241	172	400	212	188
1992	22,902	11,682	11,220	7,023	4,044	2,979	426	244	182	291	169	122
1993	22,329	11,152	11,177	7,433	4,252	3,181	438	247	191	337	178	159
1994	21,795	11,088	10,707	7,402	4,225	3,177	394	244	150	274	145	129
1995	20,549	10,319	10,230	7,465	4,310	3,155	404	228	176	299	165	134
1996	20,763	10,448	10,315	7,670	4,424	3,246	459	271	188	266	143	123
1997	20,012	10,175	9,837	7,986	4,646	3,340	406	241	165	257	136	121
1998	19,434	9,948	9,486	7,839	4,496	3,343	376	209	167	227	118	109
1999	20,311	10,407	9,904	7,944	4,506	3,438	396	229	167	226	113	113
2000	20,205	10,357	9,848	7,982	4,489	3,493	322	206	116	266	135	131
2001	19,696	9,997	9,699	7,983	4,448	3,535	282	165	117	244	126	118
2002	19,983	10,163	9,820	8,310	4,671	3,639	297	163	134	203	105	98
2003	19,343	9,881	9,462	8,520	4,754	3,766	250	133	117	220	121	99
2004	19,230	9,789	9,441	8,475	4,716	3,759	277	157	120	191	114	77

1/ excluding Agalega and Saint Brandon

Table 2.4(b) - Registered vital statistics by sex - Island of Mauritius, 1985 - 2004

Year	Live births			Deaths			Infant deaths			Still births		
	Both sexes	Male	Female	Both sexes	Male	Female	Both sexes	Male	Female	Both sexes	Male	Female
1985	18,520	9,363	9,157	6,691	3,870	2,821	441	251	190	368	186	182
1986	18,225	9,440	8,785	6,622	3,721	2,901	480	279	201	342	196	146
1987	19,151	9,693	9,458	6,581	3,761	2,820	463	283	180	344	186	158
1988	20,057	10,137	9,920	6,699	3,887	2,812	441	266	175	351	188	163
1989	20,955	10,729	10,226	6,946	4,030	2,916	452	263	189	399	208	191
1990	21,799	11,122	10,677	6,854	3,984	2,870	434	252	182	348	191	157
1991	21,436	10,988	10,448	6,815	3,929	2,886	388	230	158	386	205	181
1992	22,170	11,310	10,860	6,866	3,949	2,917	408	231	177	286	168	118
1993	21,667	10,813	10,854	7,275	4,172	3,103	424	235	189	333	176	157
1994	21,050	10,712	10,338	7,234	4,126	3,108	379	235	144	271	144	127
1995	19,824	9,962	9,862	7,298	4,219	3,079	388	220	168	297	164	133
1996	20,049	10,112	9,937	7,508	4,335	3,173	445	266	179	264	141	123
1997	19,331	9,832	9,499	7,798	4,539	3,259	393	234	159	253	133	120
1998	18,744	9,601	9,143	7,651	4,384	3,267	364	200	164	221	117	104
1999	19,543	10,023	9,520	7,791	4,416	3,375	375	221	154	219	108	111
2000	19,398	9,946	9,452	7,806	4,396	3,410	306	198	108	263	134	129
2001	18,884	9,581	9,303	7,761	4,326	3,435	263	153	110	234	119	115
2002	19,169	9,732	9,437	8,081	4,555	3,526	278	152	126	197	103	94
2003	18,518	9,448	9,070	8,310	4,638	3,672	230	127	103	205	110	95
2004	18,285	9,318	8,967	8,259	4,607	3,652	256	144	112	167	97	70

Table 2.4(c) - Registered vital statistics by sex - Island of Rodrigues, 1985 - 2004

Year	Live births			Deaths			Infant deaths			Still births		
	Both sexes	Male	Female	Both sexes	Male	Female	Both sexes	Male	Female	Both sexes	Male	Female
1985	856	426	430	215	116	99	46	21	25	15	5	10
1986	945	487	458	183	102	81	44	23	21	23	10	13
1987	882	426	456	172	83	89	41	15	26	19	10	9
1988	884	453	431	180	99	81	30	15	15	23	11	12
1989	867	453	414	203	111	92	46	28	18	16	10	6
1990	803	421	382	177	108	69	28	17	11	17	13	4
1991	761	366	395	212	107	105	25	11	14	14	7	7
1992	732	372	360	157	95	62	18	13	5	5	1	4
1993	662	339	323	158	80	78	14	12	2	4	2	2
1994	745	376	369	168	99	69	15	9	6	3	1	2
1995	725	357	368	167	91	76	16	8	8	2	1	1
1996	714	336	378	162	89	73	14	5	9	2	2	-
1997	681	343	338	188	107	81	13	7	6	4	3	1
1998	690	347	343	188	112	76	12	9	3	6	1	5
1999	768	384	384	153	90	63	21	8	13	7	5	2
2000	807	411	396	176	93	83	16	8	8	3	1	2
2001	812	416	396	222	122	100	19	12	7	10	7	3
2002	814	431	383	229	116	113	19	11	8	6	2	4
2003	825	433	392	210	116	94	20	6	14	15	11	4
2004	945	471	474	216	109	107	21	13	8	24	17	7